

The Monthly Village Magazine of Cockfield

# Green Links

March 2021



## Green Links Copy Deadline!

Please note all copy for the April issue must be  
with me by 15th March please

Janne Cutting-Keyton, Newholme, Smithwood Green,  
Cockfield. IP30 0JQ  
01284 828264 or [janne@twerbs.co.uk](mailto:janne@twerbs.co.uk)

### Would you like to Subscribe to Green Links

There are currently over 400  
subscribers to Green Links in  
Cockfield and the  
surrounding villages.

An annual subscription is  
£3.00 payable in August.

The magazine is  
delivered to your door by a  
team of local volunteer  
distributors.

Please contact  
01284 828264  
for further details

### Cockfield Village Hall

Available for hire at very  
reasonable rates

Please contact  
June Pettit  
for bookings or for  
further details  
[cockfield.org.uk/villagehall](http://cockfield.org.uk/villagehall)

**Please spread the  
word about our  
super village hall,  
huge car park  
and full facilities**

## GREEN LINKS ADVERTISING

To place an advertisement in Green Links  
or enquire about our rates please contact

Sue Harrison at  
[sue.harrison42@gmail.com](mailto:sue.harrison42@gmail.com)

# Green Links



The Monthly Village Magazine of Cockfield  
Edition 4– No 162 March 2021

Chairman and Distribution  
Editor  
Secretary  
Advertising Manager

David Simpson  
Janne Cutting-Keyton  
Morag Kelly  
Sue Harrison

Well here we are again with a definite feeling of Déjà Vu - back to an online version only for the March edition of Green Links, I sincerely hope, as I am sure we all do, that we are on the path to a speedy and safe return to some sort of normality soon.

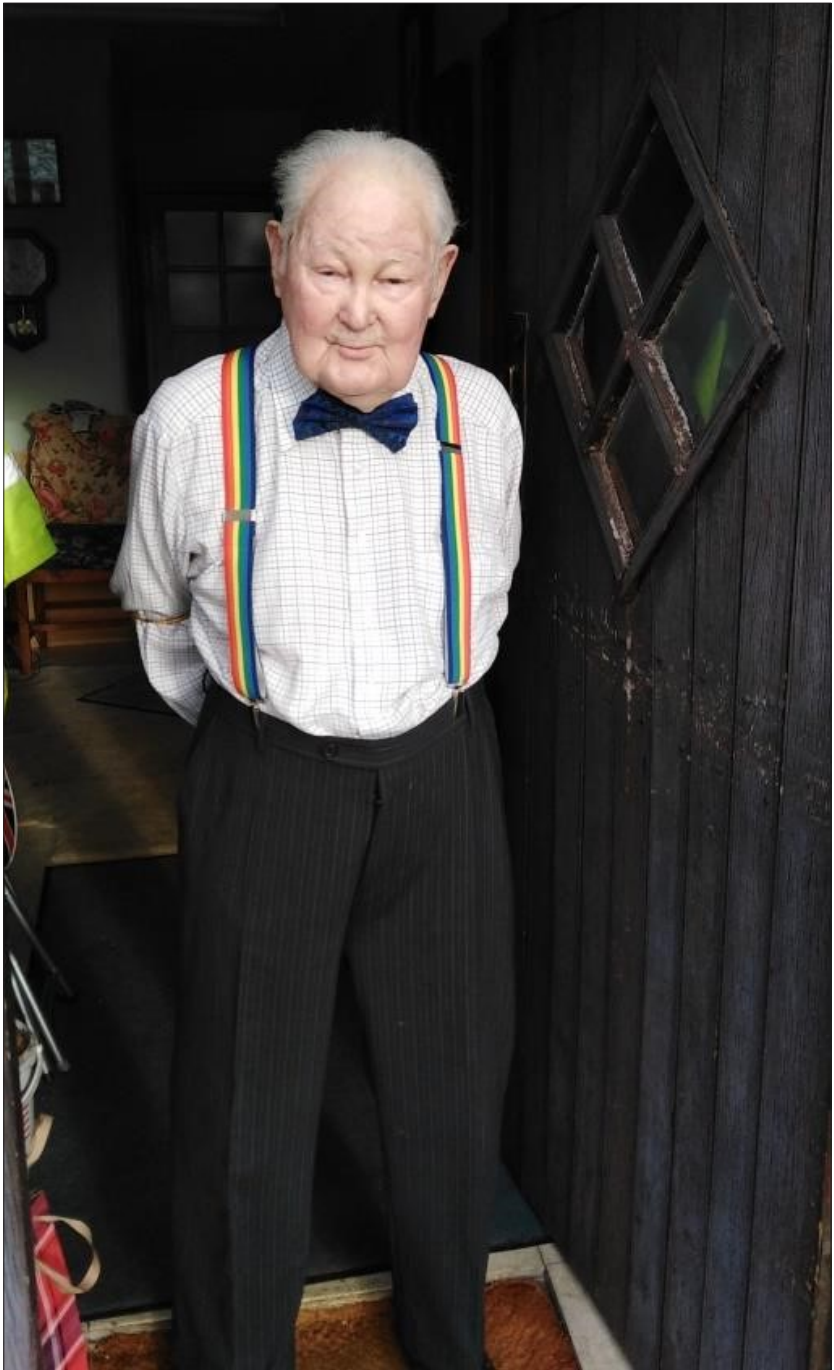
Being online only does have some advantages thought, rather than being limited to one or two colour pictures I can publish an array of super photos sent in over the past few weeks. My thanks to Kathryn, Paula, Steve and Harry, for this months gallery. I have again used up all my reserves so if you are out and about please capture some more pictures of seasonal interest and send them on in.

In Januarys edition I reprinted one of Ken Stewards tales, The Old Stubble Fowl Hut, which was very well received and prompted Ken's son, Edward, to send in a photo of the hut today 99 years on and now residing in Stanningfield. The picture is a few pages on and looks remarkably well for its age as does another 99 year old Norman Gregory who celebrated his 99th birthday on the 26th January, congratulations Norman and looking forward 12 months may we be able to celebrate your 100th in lockdown free style.

Janne

[www.cockfield.org.uk](http://www.cockfield.org.uk)

The Editor and Management Committee cannot be held responsible for the accuracy of articles or for any of the claims made by any advertiser and reserve the right to alter, shorten or refuse any items submitted for publication. All copyrights acknowledged.



Our Very Best Birthday Wishes Norman



## **Jeffreys Green, Cockfield - Affordable Housing**

**Completing March/April 2021**



I'm really pleased to report that despite a global pandemic, and two full national lockdowns, we are still on track to complete the new affordable homes at the end of March this year.

If you think that one of these flats or houses could be your new home, please read the following information to make sure you know what action you should take to be considered.

Priority will be given to people who have a connection to Cockfield and this is defined as having lived in Cockfield for at least two years, or having a close family member who has lived in Cockfield for at least two years, or people who work in Cockfield and have for at least two years. Having worked with the Parish Council for so many years to provide these local homes, we would really like to see as many people as possible with a close connection to Cockfield moving in.

Although we are currently under national lockdown restrictions, Government guidelines still allow house moving activities to take place. Orwell is still letting and selling affordable homes, with COVID Safe practices in place to protect our customers and staff.

## AFFORDABLE RENTED HOMES

There will be 12 affordable rented homes;

- 4 x 1 bedroom flats
- 2 x 2 bedroom flats
- 4 x 2 bedroom houses
- 2 x 3 bedroom houses

These homes will be owned and managed by Orwell Housing Association and rented on an affordable rent – this is a rent that is no more than 80% of the market rent of that property.



The homes will be allocated through the choice-based lettings system – Gateway to Homechoice. Anybody interested in renting one of the properties will need to be registered with Gateway to Homechoice and have an active application.

The properties will be advertised for bidding in the **middle of February** so your application will need to be registered and active before this time for you to be able to bid for a property. Please note that it can take some time from registering for your application to become live so please register as soon as possible to be considered for these homes.

More information on how to register or check your application is active can be found at [www.gatewaytohomechoice.org.uk](http://www.gatewaytohomechoice.org.uk)

Our Housing Officer, Emma Lally, is also available to help with any queries and can be contacted on 07843 328092.

## SHARED OWNERSHIP HOMES



We have four two-bedroom and two three-bedroom shared ownership homes at Jeffrey's Green, with prices at £112,500 for a 50% share of a two bed home or £125,000 for a 50% share of a three bed home. The size of share bought can more or less than 50%.

There are some eligibility criteria, for example you need to have a combined household income of less than £90,000 and you can't

own another home. Also, people with a connection to Cockfield will also be given priority should we have more applicants than properties.

We've had quite a lot of interest already so if you're not already in touch and you're interested in becoming a shared owner at Jeffrey's Green please contact Sandra Scott or Karen Suddes, Orwell's Sales Team, on 07749 417399 or at [homesales@orwell-housing.co.uk](mailto:homesales@orwell-housing.co.uk) as soon as possible.

### SELF BUILD PLOTS

As part of the first phase of construction, Orwell has provided the services connections and main roads to serve five plots of land upon which individual homes can be built. The plots have outline planning permission for detached houses and will in the first instance be offered for sale by Suffolk County Council to people who would like to have the exciting opportunity to build or procure their own home in the village. Sales will be conditional on the buyers living in the house themselves for a specified number of years and Community Infrastructure Levy (CIL) will not be payable if the houses remain occupied by the original buyer for a specified number of years. A further four larger self-build plots will be available in a later phase of the development.

Suffolk County Council have appointed Fenn Wright as marketing agents for the plots and bids will be assessed based on an agreed weighted system which benefits people with a connection to Cockfield or surrounding parishes. This means that, whilst the plots will be marketed on the open market, bids received will be weighted higher if defined local connection criteria are met by the bidder.

For example, if a bidder permanently lived in Cockfield for two of last five years or has worked in Cockfield for two of last five years, or have immediate family living in Cockfield for 2 years their bid would have a weighted factor of 1.3. If they submitted a bid for a plot of £75,000, and someone who didn't meet these criteria submitted a bid for the same plot of the same amount, the person with the Cockfield connection would be successful as, once the weighted adjustment is applied their bid, it would be worth £97,500 although they would still only pay £75,000.

For full details of the weighting criteria and connection definitions, or to express an interest, please contact Brian Prettyman at Suffolk County Council Corporate Property on 01473 264101 or by email at [brian.prettyman@suffolk.gov.uk](mailto:brian.prettyman@suffolk.gov.uk).

### FUTURE HOMES FOR SALE

The affordable homes at Jeffrey's Green are the first phase of a larger development and we are expecting to start building phase 2, the first of the market sale homes, this Spring. These are likely to be 11 new homes: a mixture of 2, 3 & 4 bed houses.

If you'd like to express an interest in buying a new home on phase 2, please provide your contact details to our sales team - Sandra Scott or Karen Suddes on 07749 417399 or at [home-sales@orwell-housing.co.uk](mailto:sales@orwell-housing.co.uk) – and we'll keep you updated with further information as it becomes available.

Thank you and stay safe  
Dawn Edwards  
Development Manager  
Orwell Housing Association

# Garden Tips for March 2021

## Flowers & Grasses

- Check whether any containers need watering especially if they are located under eaves or balconies. Aim to keep moist rather than wet.
- If some perennials such as dianthus (old fashioned pinks have become infested with couch grass and other perennial weeds these should be lifted so that you can remove the roots of the weeds and grass. You can then replant.
- Watch out for slugs and protect new shoots coming through. Slugs love Hostas, Delphiniums Sweet peas and Tulips but there are some plants that aren't so popular with them such as foxgloves (Digitalis), Day Lilies (Hemerocallis), Elephant's ears (Bergenia), Verbascum, Sedums, Geums and Aquilegia.
- Finish cutting back dead foliage from perennials to make way for new growth.
- Lift and divide overgrown clumps of perennials. This will refresh the plant and provide extra plants to position elsewhere in the garden. You can also give surplus plants to family and friends.
- Now is the time to put plant supports in. There are many types available but I tend to use natural material such as old fallen branches from my Silver birches or winter pruned twiggy branches from other shrubs (Twisted willow is very good) to support plants like Delphiniums and Peonies.

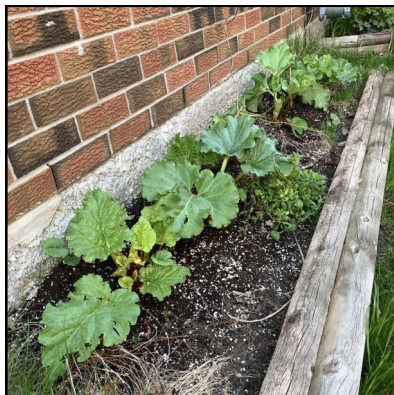


- Hardy Fuchsias - late March until early April and as the new growth appears cut back every branch to just above a pair of leaf buds to within three to four inches from the surface of the soil.
- Deadhead daffodils but let the foliage die down naturally.



## Fruit and Vegetables

- Plant shallots, onion sets and early potatoes.
- Dig in compost, well - rotted manure into vegetable beds in preparation for the new growing season.
- Feed Blueberry bushes with an ericaeous plant fertiliser.
- Mulch established Rhubarb with a thick layer of well-rotted manure taking care not to cover the crown of the plant.
- Hand weed Asparagus beds to avoid damaging their shallow roots. Mulch with well-rotted manure.
- Weed vegetable seed beds.



## Trees, Shrubs & Climbers

- Prune bush and climbing roses by removing dead, damaged and diseased parts of the plant. Prune back to an outward facing bud.
- Overgrown climbers such as Hedera (Ivy) and rambling roses can be renovated. Remove any dead and damaged shoots.
- Feed trees, hedges and shrubs by forking in a slow release fertiliser on the surface of the surrounding soil and then hoe in. Keep fertiliser away from the bark or main stem of the tree or shrub.
- Cornus (Dogwoods) which are grown for their colourful winter stems should be cut back to their bases.



- Evergreen trees and shrubs can be moved in late March depending on the weather. The soil should not be waterlogged or frozen solid. You will need to pay careful attention to watering to ensure they survive their first summer after moving

- If you haven't already done so you can prune back winter flowering jasmine once it has flowered. Remove dead and damaged shoots and shorten all laterals coming off the main framework to 5cm (2inches) cutting to a bud.
- Many summer or late summer flowering shrubs can be pruned back towards the end of the month. These include
- Buddleia (Butterfly Bush) – These can be hard pruned especially if you want to lower the canopy to enjoy the flowers. Buddleias flower on new wood. Remove older branches to avoid the shrub becoming congested.
- Lavatera (Tree Mallow) – Using clean and sharp secateurs cut all stems down to within 1ft (30cm) of the ground.
- Leycesteria (Himalayan Honeysuckle) – Once again these can be cut down to 4 inches (10cm) of the ground to produce a neat clump.



- Hardy Fuchsia – Once buds have started to appear remove any spindly and dead branches. You can then prune back to the previous year's flowering stems to within one or two buds of the older woody framework.
- Deadhead Hydrangeas before new growth appears. Cut back to about one third of last season's growth.

### Lawns

- Re-edge your lawns. This makes such a difference to the overall appearance.
- Towards the end of March and if the weather is warm apply a Spring fertiliser



- Mow Lawn if weather permits. Choose a dry day and set the blades higher on your mower.
- Now is a good time to repair your lawn or lay new turf. Prepare the soil for growing a new lawn from seed. This will allow it to settle before sowing.

### General Maintenance and planning

- Continue to keep on top of weeding whilst easier to control.
- Top up raised beds with good quality compost.
- Permanent planted containers – Check that they haven't dried out. Top dress with at least an inch of fresh compost.
- Make sure greenhouses and cold frames are ventilated on warmer days.
- In line with any current Covid guidelines enjoy visits to local nurseries to see what's looking good and in flower.
- Order seeds and plug plants.
- Remove any netting from garden ponds. Do a general tidy up. You can now start feeding the fish. Clean out water filters and check that any pond pumps are in working order.
- If possible try and fill or replenish your pond with rain water rather than tap water.
- Consider installing a water butt and position under a down pipe to make the most of any rainfall.
- Put plant supports in now while growth is still low.
- Consider planting native hedges to encourage wildlife.
- Clean patios and paths.

Happy Gardening  
Kate Ransom



## Home Adaptations Grants of up to £30,000



Home from  
Hospital



Disabled  
Facilities



Minor  
Adaptations



Terminal Illness  
/ End of Life



Living with  
Dementia



One Step Closer  
to Home

### **New service to support residents to live independently and safely in their homes**

Babergh District Council 'Independent Living Service' has been developed to help improve the quality of life of the districts' most vulnerable adults, young people and children.

The new service will offer advice and support where home adaptations, big or small, are needed to help residents live independently, safely and comfortably in their own homes, for as long as possible.

It will also assist residents with a disability, or those who may need adaptations to their home due to changes in their health, via the Disabled Facilities Grants (DFG) and the councils' Minor Adaptation Grants Scheme processes from application to completion of works.

Proposals to move the service in-house will allow the councils to ensure that the service is right for the residents across the district – with better control in the management of allocation of budgets and the processing of applications.

Cllr Jan Osborne Babergh District Council cabinet member for housing said: 'Bringing this vital service in-house will give us greater flexibility in supporting our residents. This new service will allow us to provide a more efficient and cost-effective service. Poor health is generally unplanned, and not something that you can prepare for. This new way of working will help us to directly support those with unplanned and long-term health issues or anyone needing additional support.'

The Independent Living service will help us enable more of our residents to remain in their homes and live more independently. Bringing the service in-house will, in the long-term, help to reduce demands on Suffolk's care system and the NHS – cutting down on the time residents need to spend in hospital.'

Sometimes work needs to be carried out quickly and our teams will ensure that the processes in place allows residents to return to the comfort of their own home, and a safe and secure environment.

The new service will:

- Raise the quality of life, supporting residents to remain in their home independently and safely
- Improve the processing time for Disabled Facilities Grants (DFG) applications and associated works
- Increase the annual number of applications completed
- Reduced demand on the wider Suffolk care systems
- Help to identify the best option to meet the applicants' needs
- Provide help and support to complete DFG application forms
- Carry out home surveys
- Help source reputable local contractors
- Apply for planning permission and building control consent – if required

The Independent Living Service will work in partnership with Independent Living Suffolk to provide a high standard supportive network that will facilitate independence at home. In addition to offering signposting, financial and relocation assistance across the district, the service will enable each authority to tailor their provision to meet the changing needs of their communities.

Suffolk County Council will be the first point of contact – and residents needing advice, guidance, or support can start the process by using the contact details below.

Email: [ILS@Suffolk.gov.uk](mailto:ILS@Suffolk.gov.uk)

Call: [0800 121 7711](tel:08001217711) for an assessment by therapy staff.

Once an assessment has been carried out by Suffolk County Council therapy staff, a recommendation will be made on the home adaptations and support needed.

Independent Living Service

**Grants for home adaptations**

www.babergh.gov.uk  
www.midsuffolk.gov.uk

**Grants available between £1,000 - £30,000**

For more information  
Email: [ILS@suffolk.gov.uk](mailto:ILS@suffolk.gov.uk)  
Call 0800 121 7711



Cockfield Community Council Presents

*A Music*

# Speed Quiz!

**Saturday 27<sup>th</sup> February Via Zoom**

**Set up from 7 pm, Quiz Starts 7.30**

***Take part from the comfort of your own home!***

**Enter as individuals or family teams**

**Free to enter**

You will need a laptop, desktop or tablet for the Zoom session, plus one smart device per team – phone or tablet – which will be your keypad to enter answers.

Additional information is published on [www.cockfield.org.uk](http://www.cockfield.org.uk) and full instructions will be issued to participants.

**It's great fun, not technical, typing skills not required**

***Test Your Music Knowledge! Have a go!!***

**To register your interest, or to ask any questions please contact Neil on 07900 880888 or email**

**[quiz@cockfield.org.uk](mailto:quiz@cockfield.org.uk)**

# Self-isolation support payments for low-income earners in Babergh



Residents on low-incomes and unable to work because they have been asked to self-isolate by NHS Test and Trace, can now claim a £500 payment to compensate for loss of earnings.

As part of a nationwide Government scheme, residents in Babergh who are on low incomes and are unable to work because they have been told by NHS Test and Trace that they have to self-isolate can now apply for a lump sum payment from their local councils. Money will be paid into their accounts within days of their applications being verified, to relieve immediate financial hardship.

People who receive notification from NHS Test and Trace to self-isolate because they have been in contact with someone who has tested positive for Covid-19, will be entitled to a £500 support payment if they meet all of the following requirements:

- They comply with the NHS Test and Trace notification to self-isolate
- are employed or self-employed
- are unable to work from home and will lose income as a result

**AND are in receipt of one of the following benefits:**

Universal Credit - Working Tax Credit - Income-based Employment and Support Allowance - Income-based Job Seeker's Allowance  
Income Support - Housing Benefit - Pension Credit

Discretionary payments may also be available in exceptional circumstances to individuals who meet the main qualifying criteria (i.e. low-income and unable to work because they are self-isolating) but are not in receipt of qualifying benefits and are facing severe financial hardship.

The scheme is being administered on behalf of the local authority by the Shared Revenue Partnership - with a fast and simple application form now available on the councils' websites together with information about how to easily provide evidence required and further details about the scheme.

To apply and find out more:

Babergh residents: [www.babergh.gov.uk/benefits/coronavirus-money-and-benefits-advice/](http://www.babergh.gov.uk/benefits/coronavirus-money-and-benefits-advice/)

Claims must be made within 14 days of a period of self-isolation ending. Residents are also reminded of the launch of the Suffolk Support and Advice Service earlier this month to help people access information or support relating to debt, benefits, housing or employment.

Citizens Advice Suffolk Alliance, which includes the eight Citizens Advice Bureaus across Suffolk, and Anglia Care Trust and Ipswich Housing Action Group are delivering advice and support to people through a single phone line.

The phoneline is funded by Suffolk Public Sector Leaders and has been developed by Suffolk-wide partners on the Collaborative Communities Covid-19 Board, which is part of the Suffolk Resilience Forum.

People can contact the Suffolk Support and Advice Service on **0800 068 3131** between 9am to 5pm Monday to Friday or go to: <https://www.suffolk.gov.uk/coronavirus-covid-19/suffolk-advice-and-support-service/>





The Old Stubble Fowl Hut 99 years on!



**Andy's Jet Force**

- All drainage work undertaken, from block drains to new drains
- CCTV surveys
- High pressure water jetting services
- Patios and driveways cleaned
- Septic tanks and treatment plants emptied, serviced and installed

**Andrew Waldock**  
jefforce@mail.com  
**T 01284 763952 M 07772 751645**  
[www.andysjefforce.co.uk](http://www.andysjefforce.co.uk)

# Sudbury & District Citizens Advice

**citizens  
advice**

**We offer a telephone  
advice service from  
Mon – Thurs  
10am – 1pm**



**Tel: 01787 321400, 0300 330 1151 or  
03444 111 444**

**Or email [advice@sudburycab.org.uk](mailto:advice@sudburycab.org.uk)  
website: [www.sudburycab.org.uk](http://www.sudburycab.org.uk)  
[www.citizensadvice.org.uk](http://www.citizensadvice.org.uk)**

**We're here to help you – whoever you are, whatever the problem**

**Benefits - Debt - Consumer - Housing - Employment  
Education - Health - Legal - Immigration - Relationships**

**We provide free independent, confidential and impartial advice to  
everyone on their rights and responsibilities.**





# Children's Page March

Easter is next month so start making now

Decorate a jar and pop in some flowers



Re-purpose a cardboard box



Everyone loves a cute rabbit  
- especially if it comes with  
sweets!

I hope you enjoy trying out  
some of these ideas



# COVID-19 VACCINATIONS

*Help stop the spread of COVID-19*



## Who will receive the vaccines first?

Adults aged 80+, frontline health and social care workers, care home residents and staff, and those with clinical conditions which would make them extremely vulnerable if they contracted the virus.



## Will the vaccine protect me?

The vaccination will reduce the chance of you developing Covid-19 from 2-3 weeks after you have had the first dose. The first dose will give you a high level of protection but it's essential to have the second dose within the next 12 weeks to receive the full benefit of the vaccine. Some people may still get Covid-19, but it should be much less severe.



## Is the vaccine safe?

The NHS will not offer any Covid-19 vaccinations to the public until independent experts have signed off that it is safe to do so. The vaccines have been tested on tens of thousands of volunteers from all over the world. Funding and scientific resources allowed **all of the usual steps for testing vaccines** to be done more quickly than usual.



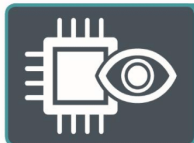
## What are the common side effects?

Tenderness in the arm where you had your injection, usually worst around 1 to 2 days after the vaccine; feeling tired; headache; general aches, or mild flu like symptoms. These symptoms normally last only a few days. No significant side effects have been observed in the tens of thousands of people involved in the trials. If any symptoms seem to get worse or if you are concerned, call NHS 111.



## Will the vaccine alter my DNA?

There is no evidence to suggest that individual genetic material will undergo an alteration after receiving the vaccine. The vaccine works by making a protein from the virus that is important for creating protection. The protein works in the same way it does for other vaccines by stimulating the immune system to make antibodies and cells to fight the infection.



## Will the vaccine include a trackable microchip?

This technology does not exist. The vaccine does not include any means of tracking people or having any remote influence over them in the future.

# SELF-ISOLATION

## Financial support



### Self-isolation support payments

If you are on a low income and are unable to work because you have been told by NHS Test and Trace that you have to self-isolate, you may be eligible for a **lump sum payment of £500** as part of the Government's Test and Trace Support Payment scheme.



### To be eligible for a payment you must:

1. Have been told to self-isolate by NHS Test & Trace and given a valid ref. number because you have tested positive for Covid-19 or been in close contact with someone who has; **and**
2. Be employed or self-employed; **and**
3. Unable to work from home and will lose income as a result; **and**
4. You or your partner are in receipt of an eligible benefit, e.g. Universal Credit, Housing Benefit



### You may be eligible for a discretionary fund payment instead if:

1. You meet criteria 1 to 3 above; **and**
2. Not currently receiving an eligible benefit; **and**
3. Earning less than £19,200 gross per annum as a single person or £37,400 per annum as a couple or single parent household; **and**
4. Have less than £3000 in household savings



### How to apply

To apply for a self-isolation support payment, please complete the online application form from your local Council (who you pay Council Tax to). Applications must be made within 28 days after the first day of your period of self-isolation. The scheme is currently open until the 31st March 2021.



### What evidence will I need to provide when making an application?

Notification from NHS Test and Trace asking you to self-isolate (this will include a Unique ID number); **and** a bank statement confirming your name and address; **and** proof of employment/earnings, **or**, if you are self-employed, evidence of self-assessment returns, trading income and proof that your business delivers services which cannot be undertaken without social contact



### How will payments be made?

Payments will be made by bank transfer to the bank account matching the bank statement provided as part of your proof of eligibility.

### Further help is available

If you are worried about your bills, your job or your home, call the Suffolk Advice and Support Service **free** on 0800 068 3131 Monday to Friday 9am-5pm



# COMMUNITY TESTING

*How to get tested for Covid-19 if you cannot work from home*



## What is community testing?

If you cannot work from home, and have to go into a place of work, you can get a free test through new community testing available in Suffolk. This will help to prevent people who do not have symptoms from spreading Covid-19 to other people without knowing.



## Who is it for?

Anyone without Covid-19 symptoms can get tested. It is aimed at people who cannot stay at home during lockdown due to work commitments. This includes people who work in roles such as: education and childcare, food production, manufacturing, transport, factories, construction, engineering etc.



## Why should I get tested if I don't have symptoms?

1 in 3 people with the coronavirus do not show any symptoms. Through community testing, we can quickly identify those who unknowingly have Covid-19 and stop the spread of the virus to other people.



## What does the test involve?

Community testing uses a new test known as a Lateral Flow Test. These are processed at the centre where you take the test, instead of being sent away. The test involves a simple swab taken from the throat and nose. Results will be processed and sent to you within 1 hour.



## What does the test show?

If you test **positive**, you must go home and self-isolate for 10 days. Financial support is available in some cases from the local authority you pay Council Tax to. If you test **negative**, you do not need to self-isolate but it is recommended to repeat the test in a few days as the level of the virus in your body may have increased, or you may have been infected since your last test.



## How do I get a test?

The first three test centres are in Ipswich, Bury St Edmunds and Lowestoft. More centres will open across the county during February. Find your nearest centre and book an appointment online at [www.suffolk.gov.uk/coronavirus-covid-19/covid-19-asymptomatic-testing/](http://www.suffolk.gov.uk/coronavirus-covid-19/covid-19-asymptomatic-testing/) or by calling **0333 772 6144**.

**SUFFOLK  
NEEDS YOU**

Find out more at [www.suffolk.gov.uk/coronavirus-covid-19](http://www.suffolk.gov.uk/coronavirus-covid-19)

03/02/  
2021

# Census 2021

## will provide a snapshot of modern society

Households across Cockfield will soon be asked to take part in Census 2021.

The census is a once-in-a-decade survey that gives us the most accurate estimate of all the people and households in England and Wales. It has been carried out every decade since 1801, with the exception of 1941.

It will be the first run predominantly online, with households receiving a letter with a unique access code, allowing them to complete the questionnaire on their computers, phones or tablets.

“A successful census will ensure everyone from local government to charities can put services and funding in the places where they are most needed,” Iain Bell, deputy national statistician at the Office for National Statistics, said.

“This could mean things like doctors’ surgeries, schools and new transport routes. That’s why it is so important everyone takes part and we have made it easier for people to do so online on any device, with help and paper questionnaires for those that need them.”

Census day will be on March 21, but households across the country will receive letters with online codes allowing them to take part from early March.

The census will include questions about your sex, age, work, health, education, household size and ethnicity. And, for the first time, there will be a question asking people whether they have served in the armed forces, as well as voluntary questions for those aged 16 and over on sexual orientation and gender identity.

Results will be available within 12 months, although personal records will be locked away for 100 years, kept safe for future generations.

For more information, visit [census.gov.uk](https://census.gov.uk).

The logo for the 2021 Census, featuring the word "census" in a lowercase, rounded, purple font, with "2021" below it in a larger, similar font.

# National UK Census Sunday 21<sup>st</sup> March 2021

## The decennial census will take place on Sunday 21<sup>st</sup> March 2021.

It is a statutory requirement to complete a census which will be available online and by hard copy. Parish and Town councils have already been contacted to assist in the message that the census is on its way. All information given and collated is protected by law – not given to any other organisation or government department – and information is withheld for one hundred years.

A postcard will arrive to all households (22-27 Feb) informing of the census date. A letter will follow between 1-12<sup>th</sup> March with an individual code for online completion. The letter will also include a telephone number for queries and/or to request a hard copy if required.

There will be support available to complete the census forms for those who find form filling difficult. It is anticipated 75% of households will complete the census without reminder to do so.

The date for the census is stated above. If after that date the census is not completed a first reminder will be sent between 22<sup>nd</sup> March and 1<sup>st</sup> April. In total three to four reminders will be issued and a visit from census personnel. Failure to complete a census through will, would attract an enforcement fine of £1,000.

Notes from last census held in 2011:

On census day in 2011, 1,586 babies were born

Under religion 176,632 residents stated their religion as Jedi

Under religion 6,212 residents stated their religion as Heavy Metal

Notes on census over the centuries:

The first census was the Domesday Book of 1086 which was completed over several years and included names, land ownership and usage plus other commodities of value

The first modern census was held in 1801

In the 2011 census the population of the UK was 56,075,912

And 94% of households completed the census in 2011

The logo for the 2021 census, featuring the word 'census' in a purple, rounded, lowercase font, with '2021' below it in a larger, purple, rounded, lowercase font.



# Surviving Winter APPEAL



Stay well



Stay connected



As in previous years, the appeal will support older and vulnerable people in Suffolk to stay warm in their homes.

We will also ask individuals about their health and wellbeing, living conditions and isolation, and connect them to people that can help.



## IF YOU NEED SUPPORT CONTACT

**The Surviving  
Winter Helpline  
01473 219770**



This year, we are expecting more people to need our help than ever before, so we are merging the Surviving Winter Appeal with the central Rebuilding Local Lives initiative that we have been running since the start of the pandemic. We hope that this action will deliver a much louder and easily understood central message to increase local giving and ensure that every vulnerable person in our 'Caring County' is supported to 'Stay Warm, Stay Well and Stay Connected'.

As the Coronavirus pandemic continues to have a profound impact on all our lives, we perhaps have a greater empathy than ever before of what it is to feel vulnerable, lonely or isolated.

At this time of year, for the team at the Foundation and all our annual Surviving Winter Appeal partners and existing donors, thoughts inevitably turn to the coming months and the impact that shorter days and colder nights may have on the health and wellbeing, particularly of vulnerable older people and others experiencing deprivation or serious issues affecting their physical or mental health.

With winter almost upon us, Suffolk is bracing itself for a dramatic increase in need. Last year our annual Surviving Winter Appeal raised enough money to heat over 1000 homes and connected many hundreds of people to other services to help tackle isolation, address physical and mental health challenges, improve poor living conditions, solve debt problems and assist with access to services to help them stay safe and well.





## Discovering items of interest on walks in the immediate area.

During 'lockdown' we are/were very fortunate to have a plethora of foot-paths, byways and quiet roads to explore, at the same time as having our daily exercise and protecting our mental wellbeing.

On a recent walk that took us into Bulls Wood, exiting into the Parish of Thorpe Morieux and onto to Green Road, we continued down a concrete farm access track (also a designated footpath) to Valley Farm, through the farm and following the track uphill to where the path turns left down to Birds Farm. If at this junction you turn right, you follow a grass track beside the field on your right that then becomes a passageway through a hedge to both sides. According to the OS Map this is 'Other route with public access', possibly an old 'green' lane or 'drift'. (If anyone knows more about the origin of this track, please let me know). This track finally emerges at the top end of Bullswood Lane.

What did we find of interest?

Two items to look out for on the walk.

If, at the above-mentioned junction you turn left (south-east) you will walk by a large man-made reservoir followed by a small lagoon that has a small building, possibly a pumping station. It is here that you will find the Memorial to the loss of two B-17G Flying Fortress bombers that both crashed after taking-off from Rattlesden Airfield, both incidents occurring with 2 weeks of each other.









However, if back at the junction, you turn right (north-west), on entering the passage between the hedges you very soon come across a separate Memorial specific to the Bomber that crashed on the 27th March 1944.

At the time of our visit, the bench close by, that can provide an opportunity reflective contemplation has what appears to be fragments from the stricken airplane.



### Hudson Crew Crash - B-17G-23-3030

On the 27th March 1944 the USAAF 447th Bombardment Group took-off in their Boeing B-17G Flying Fortress from Rattlesden Airfield in Suffolk, Station 126. This was the 40th mission for the group and the objective was to bomb airfields being used by the Luftwaffe at Morigac and Chartes in France. 1st Lt Wesley G Hudson and his crew had an issue before take-off with their assigned ship so swapped to the reserve aircraft s/n 42-38085. This turned out to be an unfortunate twist of fate for them, at 10:22 hours they lifted off from runway 24 into a thick fog, flying control lost sight of the plane immediately but all appeared to be normal. At 10:17 the aircraft crashed on remote farmland at Bullwood Farm, Thorpe

Morieux and all 10 crew were killed.

Except for Accident Report Description - From eyewitness accounts it is claimed that flames and thick smoke were seen trailing from the right wing. After circling once and rocking side to side, it made a turn towards the airfield, gained a little altitude, then went very low, climbed steeply and then dove into the ground. The engine note was said to be variable. This could indicate a runaway propeller or could have been the normal change in rpm after take-off followed by emergency power in a sudden attempt to climb. The bomb load exploded a few minutes after impact and left a cone shaped crater 12ft deep by 20ft wide! The impact point was a couple of miles from, and nearly on the extended centre line of the active runway which indicates Lt Hudson could have been executing, with great precision, a very difficult manoeuvre whilst flying blind and under instrument conditions. It is thought he was trying to return his burning plane to a runway obscured by fog, but the intensity of the fire denied him time to make the airfield.

The cause of the crash wasn't officially established. However, around the time of the incident, rumours were going around about German infiltrators at Rattlesden and that Hudson's aircraft could have been the subject of sabotage. While the official report makes no mention of this allegation, it is reasonable to assume that if this were true, the matter in all probability would have been kept from those who maintained and flew the aircraft to save their morale and spirits.



The Hudson crew with ground crew members, including ground crew chief 1st Lt Thomas C. Hill and crew chief 1st Lt James E. Parnell, 1944

Wesley G. Hudson

James E. Parnell

### King Crew Crash - B-17G-42-31088 'Heaven Can Wait'

On the 12th April 1944 the USAAF 447th Bombardment Group took-off in their Boeing B-17G Flying Fortress from Station 126, Rattlesden Airfield in Suffolk. Very much like the mysterious crash of the Hudson Crew two weeks previous, another was about to occur with 2nd Lt Philip D King and his crew of the 711th Bomb Squadron, flying their first mission in combat. This was intended to be the group's 47th mission and heading for targets in the Leipzig area of Germany. The mission was actually recalled due to weather before they reached enemy territory and therefore not credited.

2nd Lt King appeared to carry out a normal take-off in aircraft 42-31088 'Heaven Can Wait' but was in thick fog, near freezing temperatures and with a low cloud base. It is thought the aircraft struggled to gain height clipping trees resulting in propeller damage and a chunk of the horizontal stabiliser ripped off. The ship remained airborne for another mile before impacting the ground in the same area 1st Lt Hudson had crashed two weeks earlier, a fate stranger than fiction. The plane did a loop after hitting a tree line and caught fire. The crash tore off the remainder of the tail section and three of the ten crew members managed to escape, although with burn injuries. They took cover in a watery ditch before the bomb load exploded. Sgts John A. Barnik (Bail 'Tarret Gunner) Donald E. Granger (Walt Gunner) and Carl S. Reitzel (Tad Gunner) were taken to a nearby farmhouse and cared for until being transferred to hospital for treatment and recovery.

Statements from the survivors suggested the aircraft fell sluggish that morning and that they suspected an issue with the number 2 engine. 'Heaven Can Wait' had only completed 6 missions in 4 months which was a very low amount compared to most aircraft in the group, implying she was a 'Margar Queen' spending a lot of time on the ground. Deeper research shows that on her first mission, coincidentally with the Hudson Crew, she was badly shot up and had an extensive rebuild to make her airworthy again. Of the other 5 missions flown, pilots Leach, Donahue, Hutchins and Hughes, flew O88 and all were lost during the war. It would seem the aircraft named 'Heaven Can Wait' was rather ironically named and that she, and most that flew her, were doomed. As with the Hudson crew two weeks prior, rumours were still going around about German infiltrators at Rattlesden and that King's aircraft could also have been the subject of sabotage.

One more sad note about one of the survivors of the crash, is the fact that Sgt Carl S. Reitzel was amongst the 17 later killed during the Leach/Wilder mid-air collision on 2nd October 1944 at Hitcham. He had received treatment for burn injuries and returned to duty to continue his service.



Clarence V. Anderson



King Crew



Lloyd A. Bala



### Rattlesden Airfield.

Home to the USAAF 447th Bombardment Group was Station 126 completed 257 missions losing 97 aircraft in enemy action and a further 43 in accidents. By end of July 1945 most aircraft had departed and the airfield was handed over to the RAF. I recently found out that my Grandfather (Mother's side), worked for the Air Ministry and was involved in the de-commissioning of the airfields after WW2, a small world.

The information plaques, describe in detail the circumstances around the two crashes, both of which occurred in foggy conditions. The first crash on 27th March saw all 10 crew lose their lives due to the plane diving heavily into the ground, whilst the second crash on 12th April involved the inability to gain sufficient height thus clipping trees, causing damage and the plane sliding on its belly before hitting a tree line. The impact resulted in a fire with 3 of the 10-crew managing to escape, taking cover in a ditch before the bomb load exploded leaving a crater 12feet deep and 30feet wide.

Rumours circulating at the time involved possible infiltration of Rattlesden Airfield by Germans who tampered with the aircraft as both lacked power during take-off and experienced problems with their engines. This story was not exposed at the time to avoid fear of flying at a time when it was important to keep the morale and spirits high.

Paul & Jacky Heather



Government  
Counter Fraud  
Function

GOV.UK/coronavirus



Counter Fraud Authority

# COVID-19: VACCINE FRAUD



Criminals are using the COVID-19 vaccine as a way to target the public by tricking them to hand over cash or financial details. They are sending convincing-looking text messages letting people know they are eligible for the vaccine or phoning people directly pretending to be from the NHS, or local pharmacy.

## PEOPLE ARE WARNED TO BE ALERT TO THESE SCAMS:

The **NHS** will:

- ⊗ NEVER ask for payment - the vaccine is free
- ⊗ NEVER ask for your bank details
- ⊗ NEVER arrive unannounced at your home to administer the vaccine
- ⊗ NEVER ask you to prove your identity by sending copies of personal documents such as your passport

## TOP 4 VACCINE SCAMS



### TEXT MESSAGES

People are asked to press a number on their keypad or to send a text message to confirm they wish to receive the vaccine, doing so is likely to result in a charge being applied to their phone bill and fraudsters collecting personal information to use again.



### PHONE CALLS

Victims receive a phone call from a fake caller offering the vaccine for a fee or asking for bank details



### WEBSITES

Fake URL links to convincing-looking NHS vaccine booking forms, these look like official NHS forms and may contain some personal information already, at the end of the form it asks for their bank details.



### IN PERSON

Fraudsters are calling unannounced at the homes of victims by pretending to be from the NHS to administer the vaccine there and then, in exchange for a cash payment.



Government  
Counter Fraud  
Function

GOV.UK/coronavirus

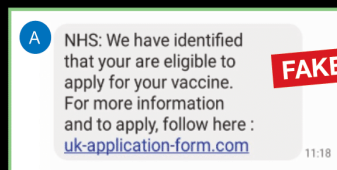


Counter Fraud Authority

## LIKE OTHER SCAMS, THE SAME ADVICE APPLIES:

- 1 **Challenge** - Could it be fake? It's ok to reject, refuse or ignore any requests that don't feel right. Check **GOV.UK** to ensure it's genuine.
- 2 Do **not respond** to text messages that try to get you to send money, or important personal information such as bank details or passwords.
- 3 Use **official** government websites and refer to 'Contact Us' sections of websites to access information and service.
- 4 **Challenge** unannounced callers to your home, NHS visits if necessary will be agreed with you directly or via carers, they will never turn up unannounced.

## EXAMPLES OF SCAMS



## FURTHER GUIDANCE AND SUPPORT

### Public Sector Organisations:

The Cabinet Office has formed a COVID-19 Fraud Response Team to assist the government with its counter fraud response. Requests for assistance should be emailed to: [covid19-counter-fraud@cabinetoffice.gov.uk](mailto:covid19-counter-fraud@cabinetoffice.gov.uk)

### Public:



National Cyber  
Security Centre

If you receive a call you believe to be fraudulent, hang up. If you are suspicious about an email you have received, forward it to [report@phishing.gov.uk](mailto:report@phishing.gov.uk). Suspicious text messages should be forwarded to the number **7726** which is free of charge.



If you believe you have been the victim of fraud or identity theft, you should report this directly to Action Fraud either online; [actionfraud.police.uk](http://actionfraud.police.uk) or via phone **0300 123 2040**.



If you have any information relating to vaccine fraud you can stay 100% anonymous by contacting Crimestoppers COVID Fraud Hotline online; [covidfraudhotline.org](http://covidfraudhotline.org) or phone **0800 587 5030**.

## Advice Page

### Coronavirus Scams

**“I’m really worried about my elderly relatives being targeted by coronavirus scams - are there any warning signs that I can tell them to look out for? What should they do if they think that something is a scam?”**

Unfortunately, we’ve seen an increase in scams since the beginning of the pandemic, so it’s good to be thinking about the steps you can take to help protect friends and family.

Common scams we’re seeing are about bogus testing kits, coronavirus vaccinations and government refunds or fines. You should watch out for messages about coronavirus from unusual email addresses or phone numbers and shouldn’t click on any links. Be aware that you won’t be asked to pay for coronavirus vaccinations - they are provided for free by the NHS.

Here are some general warning signs to look out for:

- You suspect you’re not dealing with a real company – for example, if there’s no postal address

- You’ve been asked to transfer money quickly or to pay in an unusual way – for example, by iTunes vouchers or through a transfer service like MoneyGram or Western Union

- You’ve been asked to give away personal information like passwords or PINs
- You haven't had written confirmation of what's been agreed

If you think something is a scam you should hang up the phone, close the website, or shut the front door. Never feel pressured to make a decision straight away, and don’t give out personal details or money unless you’re certain that they can trust the person. If you feel threatened or unsafe you can ring 999.

For help with online scams, contact a Citizens Advice Scams Action adviser by calling 0808 250 5050. For more information about other types of scams, visit the Citizens Advice website

We are providing advice by telephone and email, Monday – Thursday, 10am – 1pm. Please phone 01787 321400 if you need advice and leave a message and someone will call you back when available. We will attempt three times to call you back, so please expect a call from a withheld number.

You can also ring our Advice line on 0808 278 7868 or 0800 144 88 48.

Alternatively, contact us via email at [advice@sudburycab.org.uk](mailto:advice@sudburycab.org.uk) or by using the contact facility on our website [www.sudburycab.org.uk](http://www.sudburycab.org.uk).



# Computer Corner

## Windows 10 Snipping Tool

Windows 10 includes a handy feature called the Snipping Tool. This tool allows you to capture, any portion of your screen, or a window of your screen, which you can then make available in an email, document, presentation – anywhere in fact where you can paste content.

I use this all the time – it's essential when I am responding to a 'how to' request, so that I can document a Windows or program procedure and include the different screens the user will encounter.

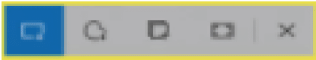
To invoke the Snipping Tool, hold down the Windows key\* and the Shift key, then tap **S**

\*Windows Key:



Your screen will turn grey and semi-transparent, and a small toolbar will appear at the top of the screen.

The toolbar provides 4 options.



The first option is the default and captures a rectangular portion of the screen. The second option is a freeform region, option 3 is the window you click, and the 4<sup>th</sup> is the entire screen. I find I almost never use other than option 1. In this case your mouse pointer will change to a cross-hair, and you simply click and drag over your chosen area.

Once the snip has been taken, go to the program in which you want the snip to appear – an email, Word document etc. – click at the required insert point and choose **Ctrl V** to paste the result into the document. You can use the perimeter grab handles to resize the pasted content.

The snipping tool can be used for any content showing on your display. If this is an image or part of an image, note that the quality of a screen snip is much lower than any original photo. So only use it where the quality is not important, not as a way to distribute a photo.

**Neil Ashton**

[computer.circle@cockfield.org.uk](mailto:computer.circle@cockfield.org.uk)



# Cockfield W.I.



We have continued to hold Zoom afternoon and evening social meetings for members who wish to get together for a chat during this period of lockdown. Eight members signed up for a Suffolk West on Your Sofa talk on the Golden Age of Fen Skating. Coincidentally, the return of the “Beast from the East” bringing prolonged, subzero temperatures has enabled fen skating to resume this year after many mild winters.

Suffolk West is also offering members a free presentation ‘Friends Against Scams’ on Tuesday 11th March at 2.30pm which will offer tips on how to spot various scams and avoid becoming a victim. It’s been a year since our last ‘proper’ meeting, when we celebrated our 91st birthday with tea, cake and a speaker showing us ‘How to Look Good in a Bin Bag’! It seems such a long time ago and with no easing of restrictions any time soon it looks like we’re set to continue in virtual mode for the foreseeable future.

Let’s hope by Easter that the majority of our members have been vaccinated and the weather improves so that we can enjoy time outdoors whether it be in our own garden, sitting on a park bench enjoying a coffee with a friend or having a picnic with family.

Goodbye winter, hello spring and better times for all.

Brenda C

A decorative banner for Tania Jones Accountancy. The banner has a black background with a pattern of vertical bars in shades of grey and white. The text is white and centered. It reads: 'Tania Jones Accountancy' in a large, bold, serif font. Below that, in a smaller, sans-serif font, is 'friendly, professional, qualified accountancy services'. Underneath is a line of bold text: '• Bookkeeping • Accounts • Tax Returns'. At the bottom, it lists contact information: 't: 01359 241105 m: 07702 830001' and 'e: tania@taniajones.co.uk'.

# Cockfield Parish Council Notes



No report on the January meeting has been received

**The Parish Council may be contacted through the Clerk, Steve Ball by  
email at**

**[parish.council@cockfield.org.uk](mailto:parish.council@cockfield.org.uk) or 01284 828987**

**Next Meeting - The next Ordinary Meeting of the Council will be held  
on Thursday 25th March 2021**



**Cockfield CEVCP School**  
Cockfield  
Bury St Edmunds  
Suffolk IP30 0LA

Tel & Fax 01284 828287  
E-mail: ad-  
min@cockfield.suffolk.sch.uk

Dear GL readers,

At present we have a lovely class of Key Worker children in school with numbers varying from 12 -16 children a day depending on the work commitments of parents. Hopefully we will be able to see all our children back next month. In the meantime, I get to see them on a Zoom assembly, which has been great, with most of our 70 children joining me on a Friday afternoon.

The children have managed incredibly well during this difficult time. They have worked hard in school and at home. Parents have done a marvellous job keeping up with weekly packs of learning we send each week, balancing work and home schooling. A big thank you to parents, and grandparents who have been helping out.

The children receive Zoom lessons and work relating to all areas of the curriculum. Birch Class children have been learning Spanish at home alongside their geography topic on South America. Wow!

PE challenges are sent home weekly and the children in school have a Sports Coach come in once a week and they have created some amazing art in the afternoons too. I am very grateful to our fantastic staff who have managed to balance so many different challenges.

To help keep everyone safe the adults working in school complete a Rapid Lateral Test twice a week and we have to take many additional precautions of course.

We dream of a summer that will allow us to go swimming, make visits, have picnics together. But first of all, I have promised all our children cake! We usually celebrate great learning, effort and behaviour with WOW awards and WOW cakes. Whilst we have continued with the certificates, I owe quite a few cakes to those at home. I won't forget.

Best wishes,  
Mrs Harkin Head teacher

# STEPHEN GREEN CARPETS

Quality Carpets & Vinyl's Supplied & Fitted  
All Aspects taken care of Gripper - Glue - Underlay

Free Quotations

PHONE 07970 488851

EMAIL: [SGRENCARP@AOL.CO.UK](mailto:SGRENCARP@AOL.CO.UK)



## Vision Safety

Confused by the maze of Health and Safety legislation affecting your business? Call us now for experienced common sense advice from experienced health and safety consultants.

Who can:

- Assist with your Covid 19 compliance
- Provide pragmatic health and safety advice,
- Deliver expert health & safety training including e-learning,
- Provide competent construction health and safety advice in compliance with CDM2015,
- Conduct thorough health and safety audits,
- Take lead for accident investigation and support,
- Can support your all year round health & safety requirements,
- Provide assistance in obtaining SSIP accreditations,
- Will answer all your health & safety questions, including help with tenders.
- Provide occupational health services,

Call Tony now on: 07485 089848

Email: [Visionsafety@gmx.com](mailto:Visionsafety@gmx.com)

## Victor Keyton

Most makes of lawnmowers serviced,  
sharpened, repaired  
Ride On or Walk Behind  
Collection/Delivery Available  
Free Estimates

Pruners,  
loppers,  
shears etc.  
sharpened

01284 828264 or 07860 762424  
Smithwood Green Cockfield







KH

Kevin Hollings  
KITCHEN STUDIO

Unit 14 Lodge Works,  
Stowmarket Road,  
Old Newton,  
IP14 4EE  
01449 257160  
info@kevinhollingskitchens.co.uk  
www.kevinhollings.com



# KARLS COMPUTER SERVICES

HAVING PROBLEMS WITH INSTALLING BROADBAND?  
OR NETWORKING OR NEED A NEW COMPUTER/LAPTOP,  
VIRUS PROBLEMS,  
1 ON 1 LESSONS  
OR JUST AN UPGRADE

GIVE ME A CALL

19 Hervey Road, B.S.E, IP33 2DN

TEL: 01284 700337 MOB: 07717 842913

[www.karlscomputerservices.co.uk](http://www.karlscomputerservices.co.uk)

EMAIL:-karl@karlscomputerservices.co.uk

## TOMLINSON GROWDCARE



JOHN DEERE

**Horticultural & Garden Machinery Suppliers**

**Sales Service Parts Repairs Toys**

Ride on mowers from £1599 Inc vat

Walk behind petrol & battery mowers from £199 Inc vat

Strimmers, hedge cutters, blowers, chainsaws etc.

Garden tools, paddock & turf machinery

Service & repair of all makes

*Set in over 20 acres – Try before you buy*

Established in Buxhall since 1991 – Call our friendly team for advice

Brettenham Road, Buxhall, Stowmarket IP14 3DL

01449 736060 [www.tomlinsongroundcare.co.uk](http://www.tomlinsongroundcare.co.uk)



**AL-KO**

**EGO**

**ECHO**

**WEIBANG**









Town & Country Interiors

All aspects of building work undertaken.

Extensions, renovations, kitchens, bathrooms and bedrooms.

Please call 01284 828 592 or 01787 282 353 or visit our website [www.tcisuffolk.co.uk](http://www.tcisuffolk.co.uk)



## NEW FARM SHOP

- Local Produce
- Fruit and Veg
- Delicatessen
- Butchers
- Wines, cordials, soft drinks

Tel: 01284 386015

[www.hennesseylifestyle.co.uk](http://www.hennesseylifestyle.co.uk)

[info@hennesseylifestyle.co.uk](mailto:info@hennesseylifestyle.co.uk)

Overland Business Park, Sudbury Road,  
Bury St Edmunds, IP30 0UL

## BRADNAMS TREE SERVICES

All aspects of tree surgery undertaken

Hedges expertly managed

Free Estimates

Stuart Bradnam BSc RRD

Call 01284 388756

## PERFECT PRESSING

IRONING PILING UP?

HELP NEEDED WITH SPRING CLEANING?

- Reliable Ironing, Laundering & Cleaning Service
- Collected & Delivered Promptly
- One Off, or on a Regular Basis

Please contact Allie on 07732 111802 or email

[info@perfectpressing.co.uk](mailto:info@perfectpressing.co.uk)

[www.perfectpressing.co.uk](http://www.perfectpressing.co.uk)



## Cockfield Community Council News March 2021

The days may be getting longer but at the time of writing (mid Feb) we are all waiting for announcements about the easing of lockdown restrictions on or around 22 Feb.

Whatever the circumstances though the Community Council Trustees have concluded that it is not realistic to attempt to organise either a Duck Race in April or the Art Show in May. However if circumstances allow we are minded to consider a Sale Trail in either June or July and the Trustees will take a view on this in March when the outlook for the summer will be much clearer.

In the meantime the virtual Speed Quiz, organised by Neil Ashton continues to be very well received with next dates being Sat 27 Feb, and most likely Sat 28 Mar. If you have not already participated please do give it a go, the technology is easy to use.

In the meantime if you have any ideas or suggestions do please get in touch with our Secretary Janne Cutting-Keyton ( [janne@twerbs.co.uk](mailto:janne@twerbs.co.uk)) or 01284 828264



### **Fred Durso** **Carpentry & Joinery**



The Hermitage, Bury Road, Cockfield, Bury St Edmunds, IP30 0JL

**Fitted Kitchens**  
**All Types of Woodwork**

**Purpose Made Fitments**  
**Free Estimates**

**Tel: 01284 828186   Mob: 07790 479064**  
**e-mail: [freddurso41@gmail.com](mailto:freddurso41@gmail.com)**





## Cockfield Community Broadcasts

In February 2015 we introduced a new email system to broadcast information to our community on events, activities and other topics of interest. This system evolved from the original eVine system and has a number of advantages including the ability for recipients to control their own subscription.

Our broadcasts sit alongside Green Links and the website as key methods of engaging with our community. For example when events are published in Green Links, we are able to use the broadcasts to let you know of updates and changes as they happen.

So we really want as many people as possible to subscribe to receive our broadcasts. Of course not all emails will be of interest to every subscriber. But since the introduction of the new system we have issued 135 broadcasts - an average of around 5 per month - so it is not a significant addition to the number of emails you already receive.

To subscribe, please visit our website at [www.cockfield.org.uk](http://www.cockfield.org.uk) and follow the link in the footer of any webpage. If you have any questions or concerns please contact me at [neilka@btinternet.com](mailto:neilka@btinternet.com).

*Neil Ashton*

Dear Friends

I am very much looking forward to the Spring and warmer weather - particularly after the last week or so of icy cold winds and snow! I know that many of you will feel the same, and that you are also looking forward to the time when you can meet up with friends and families without fear of contracting the Corona-virus. I must admit to feeling slight 'vaccine envy' as I hear of many in our local community receiving their vaccine. But I know that I will get my turn, just as many others will as the vaccination programme works through the population. It has been a fantastic feat by the NHS to get through so many people so quickly, and gives us all hope for the future.

In the Church we are also looking forward to being able to meet again for worship and fellowship. Of course we will not be able to do so in the way we did pre-Covid for quite some time, but we are already planning for the eventual return to an almost-normal way of life. We may even be able to hold a service on Easter Day.

The pandemic has felt in some ways akin to a very long Lent, where we have been able in some ways to reflect on all that we do as human beings. So as we enter the real Lenten period, so very much associated with fasting and denial, let us reflect on what life could be like after lockdown. Will we go back to old ways and habits - or will we try to do things differently? I think this is very much an opportunity to make changes in our lives - perhaps to make them simpler and to prioritise what is really important to us?

Whatever you have planned for the next few weeks, may God bless you.

Yours in Christ

Sharon

For more details on any of our services or activities then please contact Canon Sharon Potter at revsharon2@gmail.com or telephone 01284-828599 or 07825 086063

**Cockfield Benefice**  
**Rota of services for March 2021**

Sunday 7th March - Third Sunday of Lent	10am Morning Prayer via via zoom/facebook
Sunday 14th March - Mothering Sunday	10am Family@Church via via zoom/facebook
Sunday 21st March - Passion Sunday	10am Holy Communion at home via zoom/ facebook
Sunday 28th March - Palm Sunday	10am Worshipping Together via zoom/ facebook

All online services can be access via <https://www.facebook.com/cockfieldbenefice/live/>

For a zoom invitation to the services see the website or email Canon Sharon.

There will be no morning prayer at Cockfield on Tuesdays until further notice.

Please check the benefice website at [www.cockfieldbenefice.com](http://www.cockfieldbenefice.com) for up-to-date details of services



#SUFFOLKSAYSTHANKS



Your local  
tree surgeon  
based in Bury  
St. Edmunds

**Gorilla Tree Services** is your local tree care company that you can trust for all kinds of arboricultural services. We are passionate about trees, their environment and the work we do with them.

Do you want a beautiful looking estate with healthy trees and plants?  
Contact us today to discuss our services.

M: 07851 459 734 T: 01284 810 027

E: [info@gorillatreeservices.co.uk](mailto:info@gorillatreeservices.co.uk)  
[www.gorillatreeservices.co.uk](http://www.gorillatreeservices.co.uk)



- Tree felling
- Tree surgery & stump removal
- Crown raise and reduction
- Crown thinning
- Pollarding & formative pruning
- Hedging & pruning
- Green waste removal
- Chipper hire with operator
- Storm / Wind damages trees
- Phone line clearing



Local  
**HANDYMAN  
SERVICES**

Kitchen Fitting	Bathrooms	Plumbing	Minor Electrical
Worktops	Shower Rooms	- New Taps	- Plug Sockets
Sinks and Taps	Utility Rooms	- Outside Taps	- Light Switches
Tiling	Toilets	- New Radiators	- Light Fittings
Flat Pack Furniture Assembly		Interior Painting and Decorating	
Garage/Rubbish Clearance		Garden - Decking, Sheds and Bases	
Bespoke Shelving and Storage			

Getting your house ready for sale, or letting, we can do all those little jobs you have been putting off

**Telephone Paul on 01284 827402**  
Mobile 07505 881034

DBS Checked ✓ Public Liability Insurance ✓ Clean and Tidy ✓  
Prompt and Efficient ✓ Attention to Detail ✓ Pet Friendly ✓



Complete Gas,  
Oil & LpG  
Installations.

T: 01787 247540  
E: info@grdplumbingandheating.co.uk



Maintenance, Repair  
and Servicing  
for Oil Fired Boilers  
and AGA Cookers.

**Oftec Registered Engineers,  
Local, Reliable, Professional.**

T: 01787 247540  
E: info@burnerserve.co.uk  
W: www.burnerserve.co.uk



Unit 5 Norman Way, Lavenham, Suffolk CO10 9PY

**ALL ASPECTS LANDSCAPING**  
**01284624022 – 07391253048**  
**WWW.ALLASPECTSLANDSCAPING.CO**  
**CALL NOW FOR A FREE NON OBLIGATION QUOTE**



Proud members of  
**Checkatrade.com**  
Where reputation matters

**We cover all hard and soft landscaping with many years of experience**  
**FENCING -DRIVEWAYS - PATHS AND PATIOS-BLOCK PAVING - GARDEN GATES AND WALLS -TURFING AND SEEDING-GARDEN CLEARANCES-DIGGER WORK -CURB STONES-ALL TREE WORK AND HEDGE CUTTING-GRASS CUTTING LARGE/ SMALL AREAS**

## **QUALITY HOMECARE**

Are you, or do you know of someone that would benefit from having qualified and local care at home? A friendly, regular face you can look forward to seeing and having company with whilst receiving professional support.

Any daytime/evening duties (personal care, appointments, cooking, cleaning, shopping, laundry, gardening) undertaken to a high standard by a Level 2 qualified Health and Social Care domiciliary carer.

Limited spaces. References available on request.

For further information contact Linda: **07419335762**



## **S.E.P PAINTERS**

For all your Painting & Decorating requirements  
Fully professional service. Prompt, efficient, reliable.

No job too big or too small. Dulux Accredited  
Competitive prices. Free Quotations. City & Guilds qualified.

Phone Andy on: 01787 375824

Mobile: 07748 800701 or 07802 613902

Email: [andy@seppainters.co.uk](mailto:andy@seppainters.co.uk)

VISIT OUR WEB SITE ON [www.seppainters.co.uk](http://www.seppainters.co.uk)

# Lavenham Library

## Temporary Opening Hours

Monday – 10-1  
Tuesday - 10-1 and 2-4  
Thursday - 10-1 and 2-4  
Friday - 10-1 and 2-4  
Saturday - 10-1  
Sunday & Wednesday - Closed

**The library reopened during February offering a limited service. You may now collect reservations or items requested using our Select & Collect service - Call the library during opening hours or complete a form on our website.**

However, this is an ideal time to check out all our other services, activities and events that are still running online. From eBooks, author events and our online reading group to cultural and Wellbeing videos and podcasts we have something to interest everyone.

## Suffolk Libraries Day – Saturday 20 March 2021

Suffolk Libraries is a charity which runs Suffolk's library service and our aim is to make life better for communities across our county. We've been doing this throughout COVID-19, but the pandemic has been tough for us too.



We need to raise funds to safeguard our services – help us while having fun by supporting Suffolk Libraries Day. Full details are on our website but include an online Book Festival with world famous authors and a scarecrow trail which everyone can get involved with.



### Get involved in our big fundraising event!

**You can get involved safely, even while libraries are closed for events. The activities and author talks are free – we just ask for a voluntary donation.**

**We will be organizing a family Treasure Hunt testing your knowledge of our village. Look out for more details soon on the Lavenham Library FaceBook page**

## Phone A Friend – our NEW Service

Our Phone a Friend service offers regular phone calls to anyone who is:

- An older person; feeling isolated; struggling during lockdown or anyone else who would benefit from a friendly chat and someone to talk to.

Calls are made by library volunteers and are all DBS and reference checked. If you or someone you know would like a call, please contact [phoneafriend@suffolklibraries.co.uk](mailto:phoneafriend@suffolklibraries.co.uk).

The service is based on the Lifeline service which involved library staff making calls to customers during the first lockdown.

**Check our Facebook page for our weekly StoryTime session as well as Lego challenges and Family Crafts.**

## Contact Details

Lavenham Library, Lavenham Village Hall, Church St, Lavenham CO10 9QT

Tel No: 01787 247729

[www.suffolklibraries.co.uk](http://www.suffolklibraries.co.uk)

Email: [lavenham.library@suffolklibraries.co.uk](mailto:lavenham.library@suffolklibraries.co.uk)

Suffolk Libraries HMRC charity number XT34476



## FIELD COMPOST LTD

We'll Help Your Garden Grow



Composts  
Manure  
Soil Improvers  
Soil  
Bark  
Woodchip  
Mulch  
Sand and Gravel  
Lawn Care

[www.fieldcompost.co.uk](http://www.fieldcompost.co.uk)

[sales@fieldcompost.co.uk](mailto:sales@fieldcompost.co.uk)

01440 966966

## JP Services

**Sleepers**

**Timber**

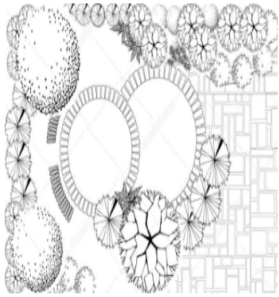
**Scaffold Boards**

**Oak Barrels supplied**

**07970 559251**

[www.jp-services.info](http://www.jp-services.info)





# THORPE LANDSCAPING & GARDENING SERVICES

Contact Gavin on 07484 511 804

- To include a regular maintenance package for clients.
- Garden design.
- All soft landscaping, including turfing, seeding, planting etc.
- Hard landscaping, including Patios, walls, decking, driveways, fencing, all types of gates.
- Garden maintenance from hedge cutting, grass cutting, pruning, weeding.

# **PS**

## **PAUL SAINSBURY**

### RESTORATION & BUILDING

**With over 20 years  
experience in restoration  
and all aspects of building**

**Free Estimates  
Mobile 07785 582556  
Email: [enq@paul-sainsbury.co.uk](mailto:enq@paul-sainsbury.co.uk)**

## **A N GILLAM**

### Building

All aspects of roofing, chimney work, Lime plastering & rendering.  
Chimney sweep

*Free quotes - No job too small,*

The Mouse House, Bradfield St Clare, IP30 0EL

**Tel 01284 388508 Mob 07961 878564**

## KEVIN SEGGIE Electrical Services

30 Years Experience

Part P Qualified      ECA Member      No Job too small

Domestic/ Commercial/ Industrial Work undertaken

Burglar Alarms fitted

Insurance testing

Free Estimates

Fully Guaranteed

Tel: 01284 830786      Mobile: 07768 108157

e-mail: kevinseggie@yahoo.com

## *Higher Hats*

*Est. 2013*

to hire / or buy  
hundreds of hats, hatinators and fascinators. every shade and  
hue of beautiful hats from the stylishly simple to the  
outrageously show stopping.  
hats for weddings, days at the races, graduations,  
garden parties, regattas or just because.

phone Caroline McCleave at higher hats to  
arrange an appointment at our premises near  
Lavenham.

07867 768732 / 01284 828841

'How a hat makes you feel is what a hat is all about.' Philip Treacy

## **SUFFOLK REVIVE A DRIVE**

Would you like your drive or patio restored to a newly laid finish.

Improve both the appearance and value of your property.

**HIGH PERFORMANCE PRESSURE CLEANING**

**PATHS, PATIOS, DRIVEWAYS, WALLS, GARDEN FURNITURE**

**DECKING, TENNIS COURTS, STABLES, SWIMMING POOLS and MORE**

**RE-POINTING, RE-SANDING AND SEALING ALSO AVAILABLE**

**TARMAC RE-DRESSED - REPAIRS UNDERTAKEN**

Phone for a FREE quotation Tel: MARK 01284 828294 or 07833 582636



*All types of electrical work covered from changing a light fitting to a complete re-wire.*

- New circuits • Fuse board upgrades • House re-wires
- Lighting design • New Kitchen wiring • Changing light fittings
- Garden lighting • Alarm systems • Smoke alarms
- Heating controls • Commercial electrics • PAT testing
- Electrical condition testing and reporting • Certification • Fault finding
- Emergency call outs • Free advice, quotations and estimates

**Call Steve on 07961 576677 or 01284 828484**  
 steveroberts101@outlook.com



**Your door-to-door laundry service  
 & wet cleaning with  
 Lagoon® Advanced Care**  
*The green cleaning revolution for  
 your clothes*

**Opening Hours: Mon-Fri 8am-5pm**

**Unit 12 Lady Lane Industrial Estate, Crockatt Road,  
 Hadleigh IP7 6BQ**

**Tel: 01473 558 448**

**e-mail: [sales@pressganglaundry.com](mailto:sales@pressganglaundry.com)**

**[www.pressganglaundry.com](http://www.pressganglaundry.com)**



# Cockfield Community Classifieds

Offered Free

**all free to any takers:  
Adjustoform dressmaking  
model & Various  
dressmaking fabrics**



**Contact: 01284 827516**

Adverts in CC Classifieds' are free to insert please send your copy to the editor at [janne@twerbs.co.uk](mailto:janne@twerbs.co.uk) or 01284 828264 by the 15th of the month. Green Links accepts no responsibility for the accuracy of any advert placed in Green Links and buyers must satisfy themselves of the quality or value of any item prior to purchase or collection.







# Todds Removals

& Todd Storage

a reliable local service you can trust

<p><i>Removals</i></p> <p><i>Storage</i></p> <p><i>Packing materials</i></p> <p><i>Packing service</i></p>	<p><i>UK, Europe and beyond</i></p> <p><i>Home or Business</i></p> <p><i>Self Storage</i></p>
--	---

## Moving?

Call us on **01787 377 489**

[www.todds-removals.co.uk](http://www.todds-removals.co.uk)




## Leon Brown

**Arb-Agri Contracting**

Tel: 01359 408521

Mobile Number: 07552393830

e-mail : [leonbrown.28@hotmail.co.uk](mailto:leonbrown.28@hotmail.co.uk)

**\*\* Tree Surgery Services \*\***

* Dead Wooding & Crown Lifting	* Felling & Sectional Dismantling
* Woodland Management	* Crown Reductions
* Chipping	* Hedge Cutting
* Firewood	* Garden & Site Clearance
* General Ground Maintenance	

PLUMBING - AIR CON - HEATING

# BENTLEY

-GROUP.co.uk

## Tel 07929 333356

[enquiries@bentley-group.co.uk](mailto:enquiries@bentley-group.co.uk)

## SPECIALISTS IN OIL BOILERS, SERVICE, REPAIR & REPLACEMENT

- Oil tank replacement
- Hot water cylinders serviced, repaired and replaced
- Heating service repair, replacement and upgrade
- Bathroom/showers installed and all other general plumbing work
- 95% breakdowns repaired within 1 hour on site - Fast response
- All work guaranteed for a minimum of 12 months - parts and labour



# Out of fuel? Emergency oil delivery required? Tank leaking?

## CARGATE engineering

Priory Barns, Drinkstone Road, Gedding, Bury St Edmunds, IP30 0QE

### We help customers stay warm around the clock!

Cargate Engineering is a family-run Oftec-registered business specialising in supplying emergency fuel to homes and businesses in remote areas.

Since being established in 1996, Cargate Engineering has also developed experience and skills that allow us to offer a varied and comprehensive list of services, including everything from routine pump station maintenance to regularly scheduled septic tank cleaning and emergency call outs for issues such as overflowing septic tanks and drainage blockages. In addition, we produce high quality CAD drawings, are experts in root ingress removal, and are licensed hazardous waste carriers, ensuring we can meet all your needs. We take pride in our ability to offer a bespoke and friendly service with effective results that will last.

- Emergency Small Load Fuel Delivery and Boiler Relight Service
- Emergency Oil Tank Pump Down and Loan Tank Service
- Tank Replacement Installation Service by Experienced Oftec Engineers
- Contaminated Fuel Uplift Service Meeting Full ADR regulations
- Tank Internals and Bund Sludge Cleaning Service
- Oil Spill - Loss - Validation and Remediation Works
- Decommission of Redundant Fuel Tanks and Fuel Buy Back Scheme



Excellent services at competitive prices...



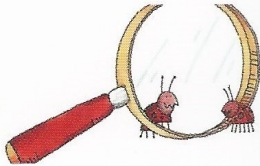
Bury St Edmunds:  
01284 386 538

24/7 Emergency:  
07974 495 362

Email:  
info@cargateweb.co.uk

Website:  
www.cargate-engineering.co.uk

## ANGLIA PEST CONTROL



### PEST CONTROL SERVICES since 1986

Call Will: 07919 356 155

Email:

iarwainbenadar77@gmail.com

## Bridge Farm

Sudbury Road, Lavenham, CO10 9PJ

Tel: 01787 247522

From Race Horses to Rabbits...

.....we can help you take care of all your animal and poultry needs with our very competitive prices on feeds, supplements and varied types of bedding inc. Hay , Straw & Woodchips

**Why not come and visit our Wild Bird Centre?  
There is so much to see!**

Also we sell Bottled Gas, Coal & Wood.  
Dishwasher Salt, Mushroom Compost & Peat.

We can deliver locally  
Open Monday - Saturday  
9.00am - 5.00pm  
Sunday  
9.00am - 1.00pm





# Announcements

Do you have an announcement you would like included here?  
There is no charge for any announcements  
Please contact the Editor Janne Cutting-Keyton on  
01284 828264 or [janne@twerbs.co.uk](mailto:janne@twerbs.co.uk)

**Special cakes for  
special celebrations**

*Jean Barker*

[www.amazingcakesbyjean.co.uk](http://www.amazingcakesbyjean.co.uk)



**01359 241135**



## Bury & District Pest Control

### PEST CONTROL SPECIALISTS

Domestic, Farm and Commercial premises

*No job too small - Contracts welcome*

*Effective control solutions for:*

- Insects
- Wasps
- Ants
- Rodents
- Moles
- Hornets
- Rabbits
- Squirrels
- Flies
- Birds etc...

25yrs Experience of infestation control



*For a total Professional friendly local service*

**Call: 01284 220096**  
or  
**01359 232745**

info@burystedmundspestcontrol.co.uk  
www.burystedmundspestcontrol.co.uk

# MOT

IN

COCKFIELD



**+ MOTOR VEHICLE  
SERVICE + REPAIRS**

# W.A WATTS

SINCE 2017

# A U T O M O T I V E

M: 07825 744 974

T: 01284 828 325

wawattsautomotive@gmail.com

Unit 1, Peppers Hall, Old Hall Lane, Cross  
Green, Cockfield, IP30 0LQ

## Nicholson Executive Travel

Professional Chauffeur Service

Airports and Seaports

Business Travel

Any UK Destination

Accounts Welcomed

Tel: 01359 232648

07850 370465

roger.nicholson1964@gmail.com

To advertise your  
business or services in  
Green Links  
please contact our  
Advertising Manager  
Sue Harrison  
at  
sue.harrison42@gmail.com



Green Matters caters for domestic and commercial clients offering:

- Grass Cutting
- Turf Laying
- Pruning
- Planting
- Garden Clearance
- Hedge Cutting
- Restoring and Maintaining
- Advice on all garden aspects
- Fully Insured
- Environment Agency Registered



☎ 01284 728044 📞 07941 640560

✉ [greenmattersgardenservices@gmail.com](mailto:greenmattersgardenservices@gmail.com)

## BMW

Best value independent servicing in East Anglia

### John Gagen Vehicle Services

Over 25 Years **BMW** experience  
Full Diagnostic Facilities  
MOT Testing  
Sympathetic to all older vehicles  
Collection and delivery available

**Unit 2 Peppers Hall, Cross Green,  
Cockfield, IP30 0LH  
Tel 01284 827404 daytime  
Mobile 07969 367640**

# Wavelength Aerials

## Aerials • Satellite & TV Systems

Neat & Discreet Installation + Maintenance + Repair

For a free quote contact us on 01449 678 653 / 07828 085 294



Supply and wall-mounting  
of Plasma & LCD TVs

[info@wavelengthaerials.co.uk](mailto:info@wavelengthaerials.co.uk)  
[www.wavelengthaerials.co.uk](http://www.wavelengthaerials.co.uk)

## DAVID FOURACRE

Your Local Painters & Decorators

Interior & Exterior

All Aspects of Work Undertaken from Surface Preparation/Repair  
to Final High Quality Finish

For Advice & Free Quotation please call

**01449 736283 Mobile: 07810 482311**

or e-mail: yoursafehands@gmail.com

## Professional Chimney Sweeping & Stove Installation

**Chimney Matters**

Town and Country

**Mobile : 07767 864127**

**Phone: 01284 789663**

[www.chimneymatters.co.uk](http://www.chimneymatters.co.uk)



- Open fires, Wood burners swept and serviced for maximum efficiency.
- Wood and Multi fuel Stoves installed.
- Certificates issued.
- Cows and Bird guards fitted.
- Fully insured.



### *Walnut Tree Designs*

BESPOKE CURTAINS & BLINDS

*Free design consultation in your own home- Complete made-to-measure service for all your soft furnishings requirements*

*CUSHIONS - FABRICS - TRIMS-  
POLES - UPHOLSTERY - PELMETS  
- HEADBOARDS - VALENCES - VE-  
NETIAN & ROLLER BLINDS*

*Call Viki, Angela or Terri Oxley to  
arrange a free consultation*

*Tel: 01284 828263*

*M: 078269 30011*

*e-mail: walnuttreedesigns@gmail.com*



**VANITY FUR**  
DOG GROOMING

## LUXURY DOG GROOMING

From a full groom to a simple wash & dry

**ALL DOGS ARE PAMPERED AT  
VANITY FUR!**

For more information contact **Charlotte**

**01284 827089**

[www.vanity-fur-doggrooming.co.uk](http://www.vanity-fur-doggrooming.co.uk)

Two A's, Hoggards Green, Stanningfield,  
Bury St Edmunds, IP29 4RG



## PAUL THE PLASTERER

All aspects of plastering work undertaken  
No job too small



Fully qualified, Clean, Honest and reliable  
Tradesman

15 Years experience

Call Paul – 01284 830887/ 07958 229559

Lawshall Village, Bury St Edmunds IP29 4PW



Free  
estimates

== *W. A. Deacon* ==

Funeral Services



*An Independent Family Company,  
dedicated to your service.  
Established over fifty years.*

Golden Charter pre-paid arrangements available.  
Private Chapel of Rest

Norman Way, High Street, Lavenham,  
Suffolk, CO10 9PY.

*24-Hour Telephone Service*

01787 248282 & 248147

## SEPTIC TANK EMPTYING AND DRAIN CLEANING

Tank emptying from £80

## A K SERVICES

Ramsey Road Hadleigh

01473 822694  
07891341645  
Available 24/7

No callout charge for  
emergencies

## WINDOWS CLEANED AND GARDENS TIDIED

***Call Craig for a free quote and introductory discount***

**01284 827110 / 07816 932878**

**brightgreen22@gmail.com**

**www.brightandgreen.co.uk**

*All work fully insured*

# BRIGHTGREEN



# NUNNAWAYS JETTING SERVICE



Soakaway Services  
Drains Unblocked  
Septic Tank Servicing  
Driveways/Patios cleaned  
Installation services available

**24/7**

**CALL TODAY on 01359 232716 or  
Mobile 07941 523498**

## Rothwell's Carpet Cleaning

### Carpet Cleaning & Stone Floor, Upholstery, Rugs

*A few points that make us stand out,*

Rothwell's has been in business since 1993

We're an honest local family firm.

Our large truck mounted machines mean  
more cleaning & drying power  
for the best results possible.

Members of both the NCCA and TACCA.

We will move the furniture.

100% satisfaction or it's FREE.

*Call Oliver and Max Campbell  
for expert help today.*

**01638 428 060**

**www.Rothwells.biz**

## GARDENER

Local gardener seeks  
domestic work

Over 17 years experience

- Lawn treatment
- Lawn cutting
- Weeding
- Pruning
- Hedge cutting
- General Garden  
Maintenance

Please contact Mr Cheng  
Pope on

**07736072083 or**

**kaiwan1010@gmail.com**

## CJ Computer Services

Repairs - Upgrades - Custom Build Computers

Reasonable Charges - On Site Service - Fully Insured

Fully Qualified Technician - One 2 One Tuition - Lap-Top Sales

Wireless Broadband Set-up and Secured

**Chris 01359 271772 or 07717 604180 [chris@cjcomputerservices.biz](mailto:chris@cjcomputerservices.biz)**

# Ventanilla Blinds

Rollers Verticals Romans Pleated  
Wooden & Metal Venetians Sheer Rollers  
Conservatory blinds Blackout blinds  
Perfect fit Pleated, Roller & Venetian  
Awnings, Garden sails & Roller curtains

01787 313677 or 07966 371963

## CHIMNEY SWEEP

### ECO SWEEP CHIMNEY SERVICES

- NEW POWER SWEEPING METHOD USED FOR A MORE THOROUGH CHIMNEY CLEAN THAN BRUSHES.
- INDUSTRIAL HEPA FILTERED VACUUM.
- FULLY INSURED.
- INSURANCE RECOGNIZED CERTIFICATES ISSUED.
- SPOTLESS, RELIABLE AND FRIENDLY SERVICE.
- ALL CHIMNEYS, WOODBURNERS, AGA, BOILER FLUES SWEPT.
- GUILD OF MASTER SWEEPS CERTIFICATED MEMBER.



TEL. 01359 232335

## TIME FOR YOU™

DOMESTIC CLEANING

### Are you tired of cleaning?



We have the  
right cleaner  
waiting  
to help  
you.

**Regular - Weekly - Cleaner**

01359 258991

Typically £13 per hour

[www.timeforyousuffolk.co.uk](http://www.timeforyousuffolk.co.uk)



## R W SERVICES

### PROPERTY & GARDEN MAINTENANCE

All aspects of property maintenance covered.  
Garden Design & Construction, Painting & Decorating  
Roofing, Carpentry, Groundwork etc.

Free quotations    Fully Insured    References available

Rod Williams 01284 828965  
Mobile 0775 2626261

Local tradesmen with integrity



## Oil-fired boiler engineer

**Mark Smith (OFTEC Registered)**

Fully trained in both domestic and light commercial boilers.

All repairs, servicing and commissioning undertaken by  
a friendly and efficient Cockfield based engineer.



**Registered  
Business**

Competitive prices

Tel: 01284 827446



**Registered  
Technician**



# **TARLING FENCING**

**FENCING AND GROUNDCARE SPECIALISTS**

Equestrian  
Agricultural  
Domestic  
Gate installation  
Landscaping  
Groundcare

**Contact John for a free quotation:  
01359 242496 or 07590 580512  
tarlingfencing@outlook.com**



**We specialise in Precision and Civil Engineering  
With over 30 years experience.**

We cover a wide range of manufacturing needs.  
Including CNC Milling and Turning,  
Structural Steels (CE Accredited),  
Welding Fabrication and Installation.

For more about us please visit our website  
[www.grahamparishengineering.co.uk](http://www.grahamparishengineering.co.uk)

Contact us on 01284 828118 or  
Email [parisheng@btconnect.com](mailto:parisheng@btconnect.com)

## Congregational Church Corner

Woodland in springtime is a pageant of renewal. Flowers open on the woodland floor and for the first time in months you can see bumblebees and butterflies, just emerged from hibernation, at the blossom of willows and black thorn. The very word spring comes from woodland. It originally means the sprays of fresh green shoots that appear as the days lengthen.

Different woods have different springs. Some are woods of primroses, violets and celandines. Others are awash with bluebells, perfuming the air with that faint ethereal honey scent.

It is hard for us to think of a world without flowers. It is amazing to see the different flowers that grow, and how, as the seasons change, different flowers appear. There are indeed wild flowers in the woods but also in the fields and hedgerows. Then there are the flowers we grow in our gardens. Flowers even grow on mountains and in deserts. The Bible tells us that God created the plants on the third day of creation, and "God saw that this was good" (Genesis 1v12). Jesus said that the wild flowers looked more beautiful than King Solomon dressed in all his fine robes (Matthew 6v28-29). God created flowers to look beautiful, and this helps us to understand that God loves beauty. The Bible also tells us that God made people in His image, so it's not surprising that we like beautiful things, especially flowers. And what a wonderful variety God has given us! He could have been content with a few hundred different kinds, but God is so generous that he gave us tens of thousands of different flowers! Next time you see some beautiful flowers, why not give thanks to the God who created the earth, and all that is in it including the wonderful variety of flowers, which we have the ability to appreciate and enjoy.

PASTOR GORDON HOLD

Enquiries Pastor Gordon Hold  
01284 762663 [ghold@gmail.com](mailto:ghold@gmail.com)



# Cockfield Contacts

October 2020 Web

CATEY Pre-School	Teresa Rutterford	<a href="mailto:catey@cockfield.org.uk">catey@cockfield.org.uk</a>
Cockfield Carpet Bowls Club	June Pettit	<a href="mailto:carpet.bowls@cockfield.org.uk">carpet.bowls@cockfield.org.uk</a>
Cockfield Cemetery	Ralph Turner	828201
Cockfield Charities	Tony Box	<a href="mailto:charities@cockfield.org.uk">charities@cockfield.org.uk</a>
Cockfield Congregational Church	Pastor Gordon Hold	01284 762663
Cockfield Football Club	Joe Brinkley	<a href="mailto:football@cockfield.org.uk">football@cockfield.org.uk</a>
Cockfield Netball Club	Lindsee Summers	<a href="mailto:netball@cockfield.org.uk">netball@cockfield.org.uk</a>
Cockfield Post Office	Barbara Turner	01284 828201
Cockfield Primary School	Trudie Harkin Headteacher	<a href="mailto:admin@cockfield.suffolk.sch.uk">admin@cockfield.suffolk.sch.uk</a>
Community Council Secretary	Janne Cutting-Keyton	<a href="mailto:community.council@cockfield.org.uk">community.council@cockfield.org.uk</a>
Computer Circle, e-news	<a href="mailto:Neil.Ashton@cockfield.org.uk">Neil Ashton</a>	<a href="mailto:computer.circle@cockfield.org.uk">computer.circle@cockfield.org.uk</a>
County Council - Local Member	Robert Lindsay	07738 264087
		<a href="mailto:robert.lindsay@suffolk.gov.uk">robert.lindsay@suffolk.gov.uk</a>
Dentist	Lavenham Dental Practice	01787 247058
	Paul Rolph & Associates	01787 247046
District Council	Babergh offices	0300 1234000
Local Member	Clive Arthey	01787 211316
		<a href="mailto:clive.urthery@babbergh.gov.uk">clive.urthery@babbergh.gov.uk</a>
Local Member	Margaret Maybury	01787 464358
		<a href="mailto:Margaret.Maybury@babbergh.gov.uk">Margaret.Maybury@babbergh.gov.uk</a>
Doctors	Long Melford Practice	01787 378226
Earls Meador/Bruffs Line	Rodney Williams	<a href="mailto:earls.meadow@cockfield.org.uk">earls.meadow@cockfield.org.uk</a>
Footpath Warden	Ralph Turner	<a href="mailto:footpaths@cockfield.org.uk">footpaths@cockfield.org.uk</a>
Friends of Cockfield School FOCSA	Mark Aston	<a href="mailto:fosca@cockfield.org.uk">fosca@cockfield.org.uk</a>
Green Links - Village Magazine	Janne Cutting-Keyton	<a href="mailto:green.links@cockfield.org.uk">green.links@cockfield.org.uk</a>
Mini - Bus Hire (Office Hours only)	Carl Brinkley	<a href="mailto:minibus@cockfield.co.uk">minibus@cockfield.co.uk</a>
Parish Council Clerk	Steve Ball	<a href="mailto:parish.council@cockfield.org.uk">parish.council@cockfield.org.uk</a>
Pavilion Administrator (C.C. Council)	Rodney Williams	<a href="mailto:pavilion@cockfield.org.uk">pavilion@cockfield.org.uk</a>
Pharmacy	The Lavenham Pharmacy	01787 247284
Stanningfield & District Agric. Club	David Simpson	<a href="mailto:stannag.club@cockfield.org.uk">stannag.club@cockfield.org.uk</a>
St. Peters Church	Rev. Sharon Potter	01284 828599
Church Wardens	Norman Kelly/David Smith	<a href="mailto:church.warden@cockfield.org.uk">church.warden@cockfield.org.uk</a>
Village Hall - Bookings	June Pettit	<a href="mailto:village.hall@cockfield.org.uk">village.hall@cockfield.org.uk</a>
Secretary	Vera Shepherd	<a href="mailto:village.hall@cockfield.org.uk">village.hall@cockfield.org.uk</a>
Village Recorder	Brenda Dyer	<a href="mailto:recorder@cockfield.org.uk">recorder@cockfield.org.uk</a>
Women's Institute Secretary	Suzanne Veal	<a href="mailto:wi@cockfield.org.uk">wi@cockfield.org.uk</a>