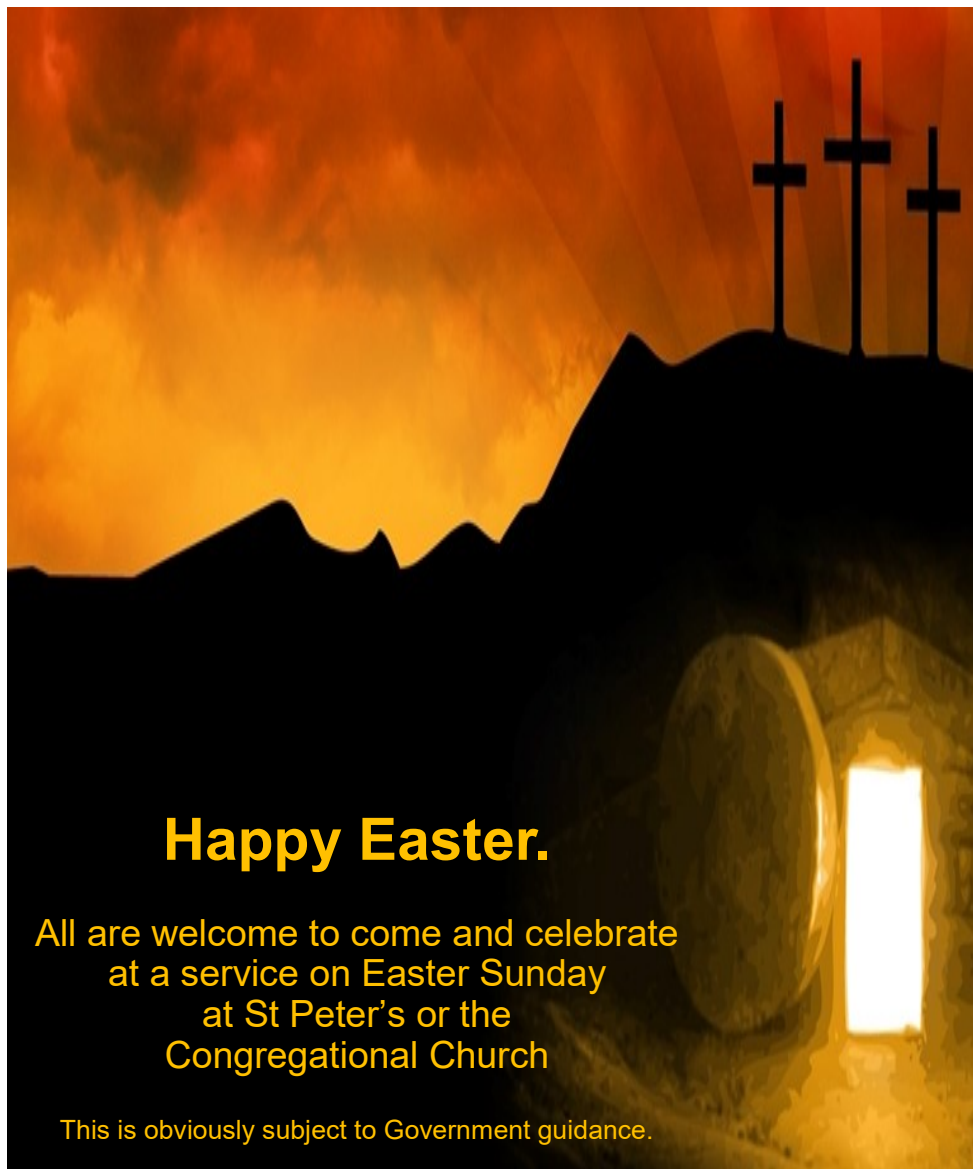


The Monthly Village Magazine of Cockfield

Green Links

April 2021



Happy Easter.

All are welcome to come and celebrate
at a service on Easter Sunday
at St Peter's or the
Congregational Church

This is obviously subject to Government guidance.

Green Links Copy Deadline!

Please note all copy for the May issue must be
with me by 15th April please

Janne Cutting-Keyton, Newholme, Smithwood Green,
Cockfield. IP30 0JQ
01284 828264 or janne@twerbs.co.uk

Would you like to Subscribe to Green Links

There are currently over 400
subscribers to Green Links in
Cockfield and the
surrounding villages.

An annual subscription is
£3.00 payable in August.

The magazine is
delivered to your door by a
team of local volunteer
distributors.

Please contact
01284 828264
for further details

Cockfield Village Hall

Available for hire at very
reasonable rates

Please contact
June Pettit
for bookings or for
further details
cockfield.org.uk/villagehall

**Please spread the
word about our
super village hall,
huge car park
and full facilities**

GREEN LINKS ADVERTISING

To place an advertisement in Green Links
or enquire about our rates please contact

Sue Harrison at
sue.harrison42@gmail.com

Green Links



The Monthly Village Magazine of Cockfield
Edition 4– No 163 April 2021

Chairman and Distribution
Editor
Secretary
Advertising Manager

David Simpson
Janne Cutting-Keyton
Morag Kelly
Sue Harrison

I am very happy that Green Links is back in print, I should like to thank all those who are out and about bringing it to you and to say sorry to those readers who don't have internet access and will have missed reading it for the past 2 months, I am sure you will understand that in the lockdown situation we were just not able to deliver.

I have been in discussion with Neil Ashton, our webmaster, regarding the introduction of a Local History section on the website, this was prompted by last months article from Paul Heather regarding the local WWII Memorials, which I have reprinted this month for those of you who didn't see it on line, I should like to build on this as a record of the recent past in Cockfield and the immediate surrounding area, if anyone has any suggestions for content please share them with me or Neil.

The development at Jeffreys Green is coming together nicely and the first self build plots are becoming available, residents of, or those with a connection to, Cockfield get favourable terms. Details of the appointed agent for these are on page 5, please contact them direct if you would like more information.

With the evenings getting longer and the temperature slowly on the rise here's hoping that as spring unfurls we can also emerge from winter and lockdown.

Janne

www.cockfield.org.uk

The Editor and Management Committee cannot be held responsible for the accuracy of articles or for any of the claims made by any advertiser and reserve the right to alter, shorten or refuse any items submitted for publication. All copyrights acknowledged.



Jeffreys Green, Cockfield

Affordable Housing Available – May 2021



There is still time to apply for new affordable housing being built at Jeffreys Green, near Mackenzie Place, Cockfield.

Priority will be given to people with a connection to Cockfield.

Following delays with the completion of work by utility companies, the properties are expected to be ready for occupation in May.

AFFORDABLE RENTED HOMES

There are 12 affordable rented homes; 1 & 2 bed flats, and 2 & 3 bed houses. These homes will be rented on an affordable rent – this is a rent that is no more than 80% of the market rent of that property.



The homes will be allocated through the choice-based lettings system – Gateway to Homechoice. Applicants will need to be registered with Gateway to Homechoice and have an active application.

More information on how to register or check your application is active can be found at www.gatewaytohomechoice.org.uk. **Orwell's Housing Officer, Emma Lally, is also available to help with any queries and can be contacted on 07843 328092.**

SHARED OWNERSHIP HOMES



There are 2 & 3 bed shared ownership houses, with prices from £117,500 for a 50% share of a two bed or from £131,250 for a 50% share of a three bed. The size of share bought can more or less than 50% to suit your affordability.

There are some eligibility criteria, for example you need to have a combined household income of less than £80,000 and you can't own another home.

Please contact Sandra Scott or Karen Suddes, Orwell's Sales Team, on 07749 417399 or at homesales@orwell-housing.co.uk for more information.

Also available at Jeffreys Green the first of the Self Build Plots

Fenn Wright have been appointed as the agent for these on behalf of Suffolk County Council

There are 5 plots situated at the side of the development and favoured terms are available for those with a link to the village, details are available from Fenn Wright as below



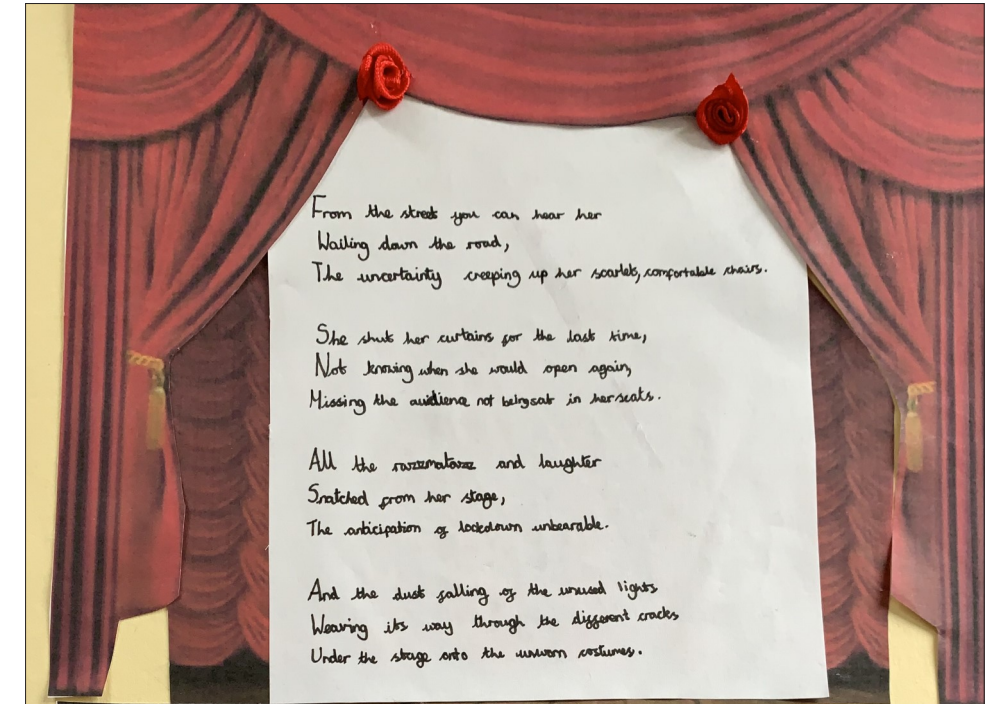
COMING SOON

Self Build Plots of Land For Sale with Outline Planning Permission in the highly regarded village of Cockfield Suffolk. Favoured terms available to applicants that can demonstrate a link to Cockfield. More information of the bidding process is available upon application.

Register now for more information.

FennWright 

01787 327000

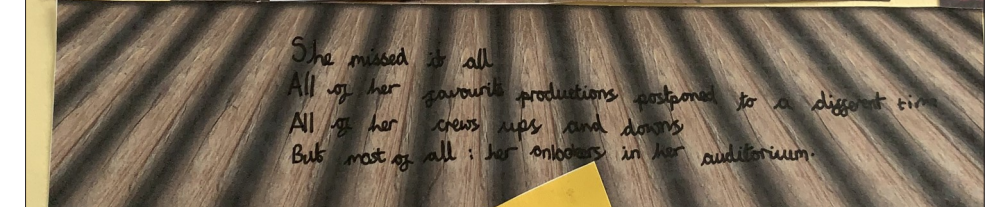


From the street you can hear her
Waiting down the road,
The uncertainty creeping up her scarlet, comfortable stairs.

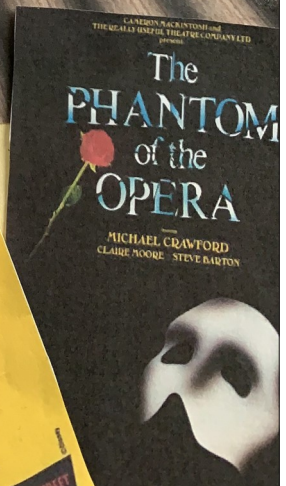
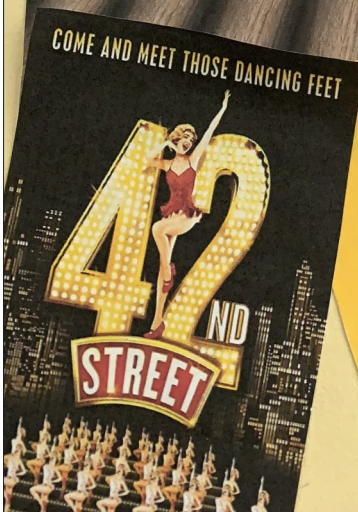
She shut her curtains for the last time,
Not knowing when she would open again,
Missing the audience not being in her seats.

All the razzmatazz and laughter
Snatched from her stage,
The anticipation of lockdown unbearable.

And the dust falling of the unused lights
Weaving its way through the different cracks
Under the stage onto the unworn costumes.



She missed it all
All of her favourite productions postponed to a different time
All of her crews ups and downs
But most of all: her snickers in her auditorium.



From the street you can hear her
wailing down the road,
the uncertainty creeping up her scarlet, comfortable
chairs.

She shut her curtains for the last time,
not knowing when she would open again,
missing the audience not being sat in her seats.

All the razzmatazz and laughter
snatched from her stage
the anticipation of lockdown unbearable.

And the dust falling off the unused lights
weaving it's way through the different cracks
under the stage onto the unworn costumes.

She missed it all.
All of her favourite productions postponed to a different
time,
all of her crews ups and downs.
But most of all, her on lookers in her auditorium.
Lottie-Mae

Editors note:
Thank you Lotte-Mae or another insightful view on lock-
down.

Garden Tips for March 2021 in case you missed them

Flowers & Grasses

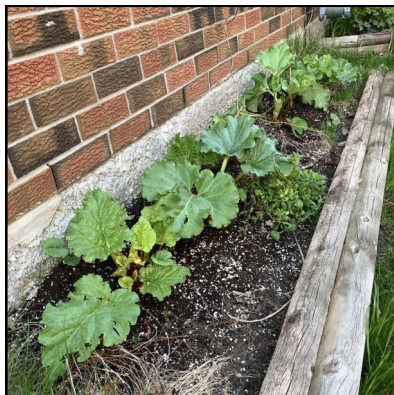
- Check whether any containers need watering especially if they are located under eaves or balconies. Aim to keep moist rather than wet.
- If some perennials such as dianthus (old fashioned pinks have become infested with couch grass and other perennial weeds these should be lifted so that you can remove the roots of the weeds and grass. You can then replant.
- Watch out for slugs and protect new shoots coming through. Slugs love Hostas, Delphiniums Sweet peas and Tulips but there are some plants that aren't so popular with them such as foxgloves (*Digitalis*), Day Lilies (*Hemerocallis*), Elephant's ears (*Bergenia*), Verbascum, Sedums, Geums and Aquilegia.
- Finish cutting back dead foliage from perennials to make way for new growth.
- Lift and divide overgrown clumps of perennials. This will refresh the plant and provide extra plants to position elsewhere in the garden. You can also give surplus plants to family and friends.
- Now is the time to put plant supports in. There are many types available but I tend to use natural material such as old fallen branches from my Silver birches or winter pruned twiggy branches from other shrubs (Twisted willow is very good) to support plants like Delphiniums and Peonies.



- Hardy Fuchsias - late March until early April and as the new growth appears cut back every branch to just above a pair of leaf buds to within three to four inches from the surface of the soil.
- Deadhead daffodils but let the foliage die down naturally.

Fruit and Vegetables

- Plant shallots, onion sets and early potatoes.
- Dig in compost, well - rotted manure into vegetable beds in preparation for the new growing season.
- Feed Blueberry bushes with an ericaeous plant fertiliser.
- Mulch established Rhubarb with a thick layer of well-rotted manure taking care not to cover the crown of the plant.
- Hand weed Asparagus beds to avoid damaging their shallow roots. Mulch with well-rotted manure.
- Weed vegetable seed beds.



Trees, Shrubs & Climbers

- Prune bush and climbing roses by removing dead, damaged and diseased parts of the plant. Prune back to an outward facing bud.
- Overgrown climbers such as Hedera (Ivy) and rambling roses can be renovated. Remove any dead and damaged shoots.
- Feed trees, hedges and shrubs by forking in a slow release fertiliser on the surface of the surrounding soil and then hoe in. Keep fertiliser away from the bark or main stem of the tree or shrub.
- Cornus (Dogwoods) which are grown for their colourful winter stems should be cut back to their bases.



- Evergreen trees and shrubs can be moved in late March depending on the weather. The soil should not be waterlogged or frozen solid. You will need to pay careful attention to watering to ensure they survive their first summer after moving

- If you haven't already done so you can prune back winter flowering jasmine once it has flowered. Remove dead and damaged shoots and shorten all laterals coming off the main framework to 5cm (2inches) cutting to a bud.
- Many summer or late summer flowering shrubs can be pruned back towards the end of the month. These include
- Buddleia (Butterfly Bush) – These can be hard pruned especially if you want to lower the canopy to enjoy the flowers. Buddleias flower on new wood. Remove older branches to avoid the shrub becoming congested.
- Lavatera (Tree Mallow) – Using clean and sharp secateurs cut all stems down to within 1ft (30cm) of the ground.
- Leycesteria (Himalayan Honeysuckle) – Once again these can be cut down to 4 inches (10cm) of the ground to produce a neat clump.



- Hardy Fuchsia – Once buds have started to appear remove any spindly and dead branches. You can then prune back to the previous year's flowering stems to within one or two buds of the older woody framework.
- Deadhead Hydrangeas before new growth appears. Cut back to about one third of last season's growth.

Lawns

- Re-edge your lawns. This makes such a difference to the overall appearance.
- Towards the end of March and if the weather is warm apply a Spring fertiliser



- Mow Lawn if weather permits. Choose a dry day and set the blades higher on your mower.
- Now is a good time to repair your lawn or lay new turf. Prepare the soil for growing a new lawn from seed. This will allow it to settle before sowing.

General Maintenance and planning

- Continue to keep on top of weeding whilst easier to control.
- Top up raised beds with good quality compost.
- Permanent planted containers – Check that they haven't dried out. Top dress with at least an inch of fresh compost.
- Make sure greenhouses and cold frames are ventilated on warmer days.
- In line with any current Covid guidelines enjoy visits to local nurseries to see what's looking good and in flower.
- Order seeds and plug plants.
- Remove any netting from garden ponds. Do a general tidy up. You can now start feeding the fish. Clean out water filters and check that any pond pumps are in working order.
- If possible try and fill or replenish your pond with rain water rather than tap water.
- Consider installing a water butt and position under a down pipe to make the most of any rainfall.
- Put plant supports in now while growth is still low.
- Consider planting native hedges to encourage wildlife.
- Clean patios and paths.

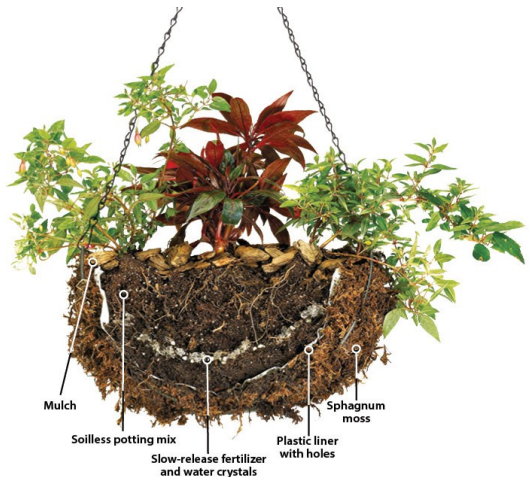
Happy Gardening
Kate Ransom



Garden Tips for April 2021

Flowers & Grasses

- Sow hardy annuals, herbs and wild flower seeds outdoors.
- In late April cut back your Penstemons down to the base of the plant provided that you can see new growth. Alternatively, cut back to just above a new pair of leaves.
- Primroses - Once they have finished flowering lift and divide. This encourages the plant to produce more flowers in the following year.
- Remove faded flowers from winter flowering pansies and violas to stop them setting seed. This will prolong the flowering period.
- In the greenhouse nip out pinch out the growing tips of fuchsias. This will encourage new side shoots and will result in a much bushier plants.
- Sweet pea plants raised from seed in a greenhouse can be planted out now providing the soil is workable/not frozen
- Continue to deadhead Daffodils and Tulips but allow the foliage to die down naturally as this builds up the bulb for the next season.
- Towards the end of the month plant up hanging baskets and containers. Don't forget to add slow release fertiliser and water-retaining gel. Keep under cover until all danger of frost has passed.
- If you have a spare patch of ground sow a packet of wildflower seeds. This will encourage pollinators into your garden.
- Remove dead growth from ornamental grasses.
- Apply a general purpose fertiliser to beds and borders. Take care not to spread over any emerging shoots as this will burn them.



Fruit and Vegetables

- Consider building a raised bed to take some of the bending out of growing vegetables.



- Sow seed outdoors for beetroot, carrots, Swiss chard, lettuce, radish and perpetual spinach. Make sure that the soil has been well prepared.
- Feed raspberry canes and other fruit bushes sprinkling a slow release fertiliser around the base of the plants.
- Good time to buy vegetable plug plants.
- Pot up tomato seedlings once they have developed true leaves above the more rounded seed leaves.
- Harvest asparagus spears when they are no more than 18cm tall. They will be tender and so delicious.

Trees, Shrubs & Climbers

- Roses – Climbers and ramblers - Tie in new growth horizontally to your trellis or wires. During any prolonged periods of dry weather make sure new plants are watered. Continue adding fertiliser in accordance with the supplier's instructions.
- Roses grown in containers should be watered regularly especially during prolonged dry periods and fed with a proprietary rose feed.
- Mulch rose beds and shrub borders with a good layer (5-8cm) of organic matter such as well-rotted manure. This will help retain moisture and improve soil structure.
- After flowering hard prune Forsythia back to strong new shoots.
- Protect fruit tree blossom from frost by covering with fleece.
- Mulch fruit trees with well-rotted manure but make sure it doesn't touch the actual trunk.
- Support pea and bean plants now with twiggy sticks.

Lawns

- Repair any bare patches. Lightly fork the bare patch and water. Then apply a thin layer of compost. Sow the lawn seed thinly. Cover with another thin layer of compost. Keep moist.
- This is also a good month for laying new turf if you want an instant lawn.
- Apply specialist high nitrogen lawn feed and weed killers.
- Mow Lawn regularly and lower the blades towards the end of the month.

General Maintenance and planning

- Make sure bird baths are clean and filled with fresh water.
- Check your compost bins to see if you have any ready to use.
- Keep a separate garden diary to note what seeds you have sown and what you have planted.
- Don't forget your houseplants. As the days become longer and warmer they may require more water. Always refer to the plant's specific care label.
- Apply weed killer to paths and patios. Don't forget to consider children, pets and wildlife before applying weed killers.
- Make sure you give your Greenhouse a thorough clean before the growing season is in full swing.
- Make sure there is fresh water in low saucers for Hedgehogs.
- Leave a flat stone in the garden so that Thrushes have something to smash snail shells on.
- Divide and replant waterlilies once they are showing signs of growth.
- If the water in your pond goes from clear to greenish and persists consider adding oxygenating plants.



Happy Gardening
Kate Ransom

Children's Page

April

Children can be excellent gardeners too so please encourage your parents to let you have a go, its good to be outside and you can eat what you grow!



There is lots of information on line giving the easiest item to plant and don't forget about flowers too a sunflower will grow taller than you are and will provide seeds for the birds into the winter.





Cockfield Parish Council

Notes

Summary report of the Ordinary Parish Council meeting held on 18th February 2021 by Skype Video Conference

Cutting Grass on Verges; Councillors noted that the pavement along the A1141 at the end of Windsor Green Lane had now had the verge encroachment removed and tidied to give the full width.

Turfing at Great Green; Turf to be laid at the Adventure Playground to improve the ground finish was being deferred until the weather improves.

Request to name the road on the Garage site development, Great Green, Cockfield.

Following agreement of Cllr Morley's proposal to name the street 'Scotts Way' to preserve the historic link to the site, the Clerk has notified BMSDC of the Parish Council's decision.

New SID and support posts; Following Cllrs approval of the supplier's quotation, the Clerk has now placed an order with Westcotec

Parking Bays at Great Green; Following approval Cllr Morley is liaising with the contractor to commence with the resurfacing and edging of the two separate parking bays at the Great Green.

County Councillor Robert Lindsey noted in his written report that the county council agreed on Thursday 11 February to raise the precept on the council tax for 21/22 for the general budget by 1.99% and by 2% for social care (below the 3% maximum allowed). The council is assuming about £41m extra spending over the previous year and so is taking £16.7m from "risk reserves" to balance the budget.

BMSDC Cllr Margaret Maybury reminded the meeting of the forthcoming Census and notifications that were being sent out.

Planning: Councillors considered applications received;

DC/21/00279: Submission of details for reserved matters following approval of DC/18/00474 and subsequent DC/20/04440 for the appearance, layout, scale

and landscaping of Plot 1. (phased development for the erection of 3No dwellings): Land at Bury Road, Cross Green, Cockfield, IP30 0LG. (Consultation Response Deadline 08/02/21, Extended to 19/02/21).

The Parish Council were not able to support this application – Full details can be found on the BMSDC planning portal

DC/21/00304: Planning Application. Erection of 1no dwelling house (amendment to Plot 5 approved under DC/19/05387). Plot 5, Land Adj Hope House, Cross Green, Cockfield, Bury St Edmunds Suffolk IP30 0LG. (Consultation Response Deadline 10/02/21, Extended to 27/02/21)a

The Parish Council had not supported the original application which was subsequently approved by BMSDC so establishing the principle. The Parish Council were therefore not able to offer further comment of objection.

DC/21/00124: Planning Application - Erection of 2No detached five-bedroom dwellings, rearranging the car parking relating to the public house. Creation of vehicular access drive to serve the two dwellings. Demolition of the existing double garage together with additional landscaping. Three Horseshoes, Stows Hill, Cockfield, Bury St Edmunds Suffolk IP30 0JB. (Consultation Response Deadline 11/02/21, Extended to 27/02/21)

The Parish Council were not able to support this application – Full details can be found on the BMSDC planning portal

DC/21/00437: Householder Planning Application - Erection of front porch, 1no. two storey rear extension and 2no. single storey rear extensions. Installation of 4no. courses of brick plinths and cement render to existing external walls. Works to existing side extension including roof covering and weatherboarding. Works to garage including amendments to doors, 4no. courses of brick plinths, weatherboarding and roof covering (following demolition of existing single storey rear extension and porch). Laburnum Cottage, Windsor Green, Cockfield, Bury St Edmunds Suffolk IP30 0LY. (Consultation Response Deadline 15/02/21, Extended to 27/02/21)

The Parish Council supported this application – Full details can be found on the BMSDC planning portal

Babergh District Council planning permissions/refusals received:

DC/20/05222: Application under S73a for removal or variation of conditions relating to approved DC/19/03063 dated 12/11/2019 Town and Country Plan Act 1990. (Demolition of existing building. Erection of 9no dwellings and creation of a new vehicular access) (Conditions 2, 3, 5, 6, 8, 9, 10, 12, 13, 14, 16, 17 and 18.) - Changes to the design and layout of the scheme and construction management. The Garage, Great Green, Cockfield, Bury St Edmunds Suffolk IP30 0HJ. **Decision: Planning Permission has been Granted.**

DC/20/05381: Planning Application - Conversion and extension of existing agricultural building to provide 1no.single storey dwelling (with associated demolition). Colchester Green Farm, Colchester Green, Cockfield, Bury St Edmunds Suffolk IP30 0HG. **Decision: Planning Permission has been Granted.**

DC/21/00480: Discharge of Conditions Application for DC/19/04576 - Condition 7 (Archaeology Site Investigation). Land to The North West Of, Mackenzie Place, Cockfield, Suffolk. **Decision: Conditions Approved.**

DC/20/05787: Notification under Schedule 2 Part 3 Class Q of the Town and Country Planning (General Permitted Development) (England) Order 2015. An application to determine if prior approval is required for a proposed: Change of Use of Agricultural Buildings to Dwelling houses (Class C3), and for building operations reasonably necessary for the conversion. The Town and Country Planning (General Permitted Development) (England) Order 2015 (as amended) Schedule 2, Part 3, Class Q - Conversion of barn to form 1No dwelling. Earls Hall Farm, Earls Hall Road, Cockfield, Bury St Edmunds Suffolk IP30 0JD. **Decision: Prior Approval has been Given, subject to Conditions.**

DC/20/05848: Outline Planning Application (some matters reserved, access to be considered) - Erection of 2no. detached dwellings and associated garages (with access) (re-submission of DC/20/01352) Land North Of, Howe Lane, Cockfield, Suffolk. **Decision: Outline Planning Permission has been Refused.**

DC/20/05849: Outline Planning Application (some matters reserved, access to be considered) - Erection of 2 no. detached dwellings and associated garages (with access). Land North Of, Howe Lane, Cockfield, Suffolk. **Decision: Outline Planning Permission has been Refused.**

MacKenzie Place (Jeffreys Green) Housing Development: Dawn Edwards (Orwell Housing) attended to give councillors an update on the contractor's progress and their difficulties during the pandemic, together with the housing opportunities soon occurring and marketing initiatives for the self-build plots. Separate detailed reports will continue to be placed in Greenlinks / Village website.

Quiet Lanes Suffolk Initiative: Cllr Southgate had been involved with QLS initiative and updated that two lanes had now been confirmed as meeting the criteria. However, whilst acknowledging benefits councillors saw that subsequent official designation could lead to other legal restrictions, in particular the council's ability to manage the vegetation along the roadside which is a significant safety issue. Councillors agreed therefore not to pursue the designation any further. The council would look at other means of reminding drivers of the potential for pedestrians etc.

Neighbourhood CIL - Feasibility of new Bus Shelter at MacKenzie Place; Cllr Morley advised he was awaiting feedback from a SCC approved highways contractor on working limitations on the A1141 and compliance requirements any new shelter would require.

CCTV at the school / village hall; Following recent anti-social behaviour a proposal for the Parish Council to make a Neighbourhood CIL contribution of £500 towards the cost of installing CCTV cameras at the Village Hall and School was

deferred. This was to await additional technical information and legal position of the scheme, so allowing an informed decision to be made.

Future of the Minibus: Cllr Williams confirmed the Community Council Trustees' decision for no future involvement with the village Minibus. With the vehicle now being handed to the Parish Council, Councillors agreed that options should be explored and reported back to the next meeting. Contact had already been made with someone experienced in such matters for advice.

Emergency Plan; Cllr Webster agreed to update the documentation. However, the next action is to secure volunteers around the village to assist when the plan requires implementation.

Cemetery Fees: Cllr Turner has continued to research the scale of comparable charges around the area and at this time suggests we retain the existing level of charges.

Litter Picking: Councillors noted the continued and increasing problem of litter around the village. The prospect of engaging a commercial organisation was not seen as the best initial response. In the first instance a circular would be posted to canvass support from around the village to see if regular volunteers could be found to litter pick.

Glebe Land – with the pandemic situation potentially easing councillors agreed to now look to roll out the allotments and tidy up the site after the winter season.

Playground – the new playground is now completed. However, the ongoing maintenance was not something the contractor offers, so a maintenance package needs to be set up. The clerk would approach SCC contractor Vertas and the companies that typically provide the annual safety inspection.

Pavilion Update: Councillors noted only the ongoing issues with anti-social behaviour and continued break-ins to the shed. Contact was being made with the police for assistance to deal with this.

Highways and Emergencies - Cllr Cutting-Keyton noted whilst potholes etc were still being report on the portal, weather conditions were preventing remedial works in many cases.

Police/Fire - Cllr Cutting-Keyton urged people to inform the police of any incidents so these were correctly recorded and there would hopefully be some follow up. The ongoing antisocial behaviour, whilst initially difficult to secure any input from the authority, was now being taken up by the local SNT officer.

The Parish Council may be contacted through the Clerk, Steve Ball by email at: parish.council@cockfield.org.uk or 01284 828987

Next Meeting - The next Ordinary Meeting of the Council will be held on Thursday 29th April 2021

Cockfield Community Council Presents

Speed Quiz!

Saturday 24th April Via Zoom

Set up from 7.15 pm, Quiz Starts 7.30

Take part from the comfort of your own home!

Enter as individuals or family teams

Free to enter

You will need a laptop, desktop or tablet for the Zoom session, plus one smart device per team – phone or tablet – which will be your keypad to enter answers.

Additional information is published on www.cockfield.org.uk and full instructions will be issued to participants.

It's great fun, not technical, typing skills not required

Test Your Wide-Ranging Knowledge! Have a go!!

To register your interest, or to ask any questions please contact Neil on 07900 880888 or email

quiz@cockfield.org.uk

Discovering items of interest on walks in the immediate area.

During 'lockdown' we are/were very fortunate to have a plethora of foot-paths, byways and quiet roads to explore, at the same time as having our daily exercise and protecting our mental wellbeing.

On a recent walk that took us into Bulls Wood, exiting into the Parish of Thorpe Morieux and onto to Green Road, we continued down a concrete farm access track (also a designated footpath) to Valley Farm, through the farm and following the track uphill to where the path turns left down to Birds Farm. If at this junction you turn right, you follow a grass track beside the field on your right that then becomes a passageway through a hedge to both sides. According to the OS Map this is 'Other route with public access', possibly an old 'green' lane or 'drift'. (If anyone knows more about the origin of this track, please let me know). This track finally emerges at the top end of Bullswood Lane.

What did we find of interest?

Two items to look out for on the walk.

If, at the above-mentioned junction you turn left (south-east) you will walk by a large man-made reservoir followed by a small lagoon that has a small building, possibly a pumping station. It is here that you will find the Memorial to the loss of two B-17G Flying Fortress bombers that both crashed after taking-off from Rattlesden Airfield, both incidents occurring with 2 weeks of each other.







However, if back at the junction, you turn right (north-west), on entering the passage between the hedges you very soon come across a separate Memorial specific to the Bomber that crashed on the 27th March 1944.

At the time of our visit, the bench close by, that can provide an opportunity reflective contemplation has what appears to be fragments from the stricken airplane.



Hudson Crew Crash - B-17G-23-3030

On the 27th March 1944 the USAAF 447th Bombardment Group took-off in their Boeing B-17G Flying Fortress from Rattlesden Airfield in Suffolk, Station 126. This was the 40th mission for the group and the objective was to bomb airfields being used by the Luftwaffe at Morigac and Chartes in France. 1st Lt Wesley G Hudson and his crew had an issue before take-off with their assigned ship so swapped to the reserve aircraft s/n 42-38085. This turned out to be an unfortunate twist of fate for them, at 10:22 hours they lifted off from runway 24 into a thick fog, flying control lost sight of the plane immediately but all appeared to be normal. At 10:17 the aircraft crashed on remote farmland at Bullwood Farm, Thorpe Morieux and all 10 crew were killed.

Except for Accident Report Description - From eyewitness accounts it is claimed that flames and thick smoke were seen trailing from the right wing. After circling once and rocking side to side, it made a turn towards the airfield, gained a little altitude, then went very low, climbed steeply and then dove into the ground. The engine note was said to be variable. This could indicate a runaway propeller or could have been the normal change in rpm after take-off followed by emergency power in a sudden attempt to climb. The bomb load exploded a few minutes after impact and left a cone shaped crater 12ft deep by 20ft wide! The impact point was a couple of miles from, and nearly on the extended centre line of the active runway which indicates Lt Hudson could have been executing, with great precision, a very difficult manoeuvre whilst flying blind and under instrument conditions. It is thought he was trying to return his burning plane to a runway obscured by fog, but the intensity of the fire denied him time to make the field.

The cause of the crash wasn't officially established. However, around the time of the incident, rumours were going around about German infiltrators at Rattlesden and that Hudson's aircraft could have been the subject of sabotage. While the official report makes no mention of this allegation, it is reasonable to assume that if this were true, the matter in all probability would have been kept from those who maintained and flew the aircraft to save their morale and spirits.



Wesley G. Hudson

[Caption]

[Caption]

[Caption]

[Caption]

[Caption]

The Hudson crew with passengers, including pilot with aircraft 'Heaven Can Wait' (the aircraft in the background) on 27th March 1944

James F. Penning

King Crew Crash - B-17G-42-31088 'Heaven Can Wait'

On the 12th April 1944 the USAAF 447th Bombardment Group took-off in their Boeing B-17G Flying Fortress from Station 126, Rattlesden Airfield in Suffolk. Very much like the mysterious crash of the Hudson crew two weeks previous, another was about to occur with 2nd Lt Philip D King and his crew of the 711th Bomb Squadron, flying their first mission in combat. This was intended to be the group's 47th mission and heading for targets in the Leipzig area of Germany. The mission was actually recalled due to weather before they reached enemy territory and therefore not credited.

2nd Lt King appeared to carry out a normal take-off in aircraft 42-31088 'Heaven Can Wait' but was in thick fog, near freezing temperatures and with a low cloud base. It is thought the aircraft struggled to gain height clipping trees resulting in propeller damage and a chunk of the horizontal stabiliser ripped off. The ship remained airborne for another mile before impacting the ground in the same area 1st Lt Hudson had crashed two weeks earlier, a fate stranger than fiction. The plane did a loop after hitting a tree line and caught fire. The crash tore off the remainder of the tail section and three of the ten crew members managed to escape, although with burn injuries. They took cover in a watery ditch before the bomb load exploded. Sgt John A Barick (Ball 'Tarret Gunner') Donald E Granger (Walt Gunner) and Carl S Reitzel (Tad Gunner) were taken to a nearby farmhouse and cared for until being transferred to hospital for treatment and recovery. Statements from the survivors suggested the aircraft fell sluggish that morning and that they suspected an issue with the number 2 engine. 'Heaven Can Wait' had only completed 6 missions in 4 months which was a very low amount compared to most aircraft in the group, implying she was a 'Manger Queen' spending a lot of time on the ground. Deeper research shows that on her first mission, coincidentally with the Hudson crew, she was badly shot up and had an extensive rebuild to make her airworthy again. Of the other 5 missions flown, pilots Leach, Donahue, Hutchins and Hughes, flew O88 and all were lost during the war. It would seem the aircraft named 'Heaven Can Wait' was rather ironically named and that she, and most that flew her, were doomed. As with the Hudson crash two weeks prior, rumours were still going around about German infiltrators at Rattlesden and that King's aircraft could also have been the subject of sabotage. One more sad note about one of the survivors of the crash, is the fact that Sgt Carl S Reitzel was amongst the 17 later killed during the Leach/Wilder mid-air collision on 2nd October 1944 at Hitcham. He had received treatment for burn injuries and returned to duty to continue his service.



Clarence V. Anderson

King Crew

Lloyd A. Bala



Rattlesden Airfield.

Home to the USAAF 447th Bombardment Group was Station 126 completed 257 missions losing 97 aircraft in enemy action and a further 43 in accidents. By end of July 1945 most aircraft had departed and the airfield was handed over to the RAF. I recently found out that my Grandfather (Mother's side), worked for the Air Ministry and was involved in the de-commissioning of the airfields after WW2, a small world.

The information plaques, describe in detail the circumstances around the two crashes, both of which occurred in foggy conditions. The first crash on 27th March saw all 10 crew lose their lives due to the plane diving heavily into the ground, whilst the second crash on 12th April involved the inability to gain sufficient height thus clipping trees, causing damage and the plane sliding on its belly before hitting a tree line. The impact resulted in a fire with 3 of the 10-crew managing to escape, taking cover in a ditch before the bomb load exploded leaving a crater 12feet deep and 30feet wide.

Rumours circulating at the time involved possible infiltration of Rattlesden Airfield by Germans who tampered with the aircraft as both lacked power during take-off and experienced problems with their engines. This story was not exposed at the time to avoid fear of flying at a time when it was important to keep the morale and spirits high.

Paul & Jacky Heather

Computer Corner

Excel Tables

Tables in Word are quite well known, but tables in Excel less so. After all, an Excel worksheet is by its very nature constructed of rows, columns, and cells – the building blocks of a table. But in fact an Excel table is a specific thing and brings with it some advantages over and above using a range of cells.

Take a simple example:

Date	Payee	Type	Amount
19-Jan-21	Sainsburys	Credit Card	40.00
20-Jan-21	E.On	Online	400.00
21-Jan-21	BP	Credit Card	50.00
02-Feb-21	Amazon	Online	25.00
02-Feb-21	Sainsburys	Credit Card	65.00

Click anywhere in the range and select **Insert** then **Table**. Excel will infer the dimensions of your table and whether it has header rows. Both can be changed if required. Click OK on the table insert screen to produce this result:

Date	Payee	Type	Amount
19-Jan-21	Sainsburys	Credit Card	40.00
20-Jan-21	E.On	Online	400.00
21-Jan-21	BP	Credit Card	50.00
02-Feb-21	Amazon	Online	25.00
02-Feb-21	Sainsburys	Credit Card	65.00

Excel transforms the selection into a designed Table. The header columns have a drop-down arrow which reveal functions making it easy to sort the table, or to filter any of the entries in any column.

With any cell in the Table selected, an additional Excel main menu item appears, Table Design. Select this menu item to open up Table related options. By checking the Total Row box in the Table Style Options section, an additional row will be added with the total calculation(s).

Table Style Options

Header Row
 First Column
 Filter Button
 Total Row
 Last Column
 Banded Rows
 Banded Columns

With this result:

Date	Payee	Type	Amou
19-Jan-21	Sainsburys	Credit Card	40.00
20-Jan-21	E.On	Online	400.00
21-Jan-21	BP	Credit Card	50.00
02-Feb-21	Amazon	Online	25.00
02-Feb-21	Sainsburys	Credit Card	65.00
Total			580.00

Now by clicking the drop-down arrow in the column heading labelled Type, and unchecking the box labelled Online, you can see the total expenditure in the Credit Card category:

Text Filters

Search

- (Select All)
- Credit Card
- Online
- (Blanks)

Date	Payee	Type	Amou
19-Jan-21	Sainsburys	Credit Card	40.00
21-Jan-21	BP	Credit Card	50.00
02-Feb-21	Sainsburys	Credit Card	65.00
Total			155.00

Additional rows or columns can be added easily by grabbing the small marker in the bottom right corner of the table and dragging down or to the right. The Total row will automatically be moved to the bottom of the extended table when rows are added.

Neil Ashton

computer.circle@cockfield.org.uk

Self-isolation support payments for low-income earners in Babergh



Residents on low-incomes and unable to work because they have been asked to self-isolate by NHS Test and Trace, can now claim a £500 payment to compensate for loss of earnings.

As part of a nationwide Government scheme, residents in Babergh who are on low incomes and are unable to work because they have been told by NHS Test and Trace that they have to self-isolate can now apply for a lump sum payment from their local councils. Money will be paid into their accounts within days of their applications being verified, to relieve immediate financial hardship.

People who receive notification from NHS Test and Trace to self-isolate because they have been in contact with someone who has tested positive for Covid-19, will be entitled to a £500 support payment if they meet all of the following requirements:

- They comply with the NHS Test and Trace notification to self-isolate
- are employed or self-employed
- are unable to work from home and will lose income as a result

AND are in receipt of one of the following benefits:

Universal Credit - Working Tax Credit - Income-based Employment and Support Allowance - Income-based Job Seeker's Allowance
Income Support - Housing Benefit - Pension Credit

Discretionary payments may also be available in exceptional circumstances to individuals who meet the main qualifying criteria (i.e. low-income and unable to work because they are self-isolating) but are not in receipt of qualifying benefits and are facing severe financial hardship.

The scheme is being administered on behalf of the local authority by the Shared Revenue Partnership - with a fast and simple application form now available on the councils' websites together with information about how to easily provide evidence required and further details about the scheme.

To apply and find out more:

Babergh residents: www.babergh.gov.uk/benefits/coronavirus-money-and-benefits-advice/

Claims must be made within 14 days of a period of self-isolation ending. Residents are also reminded of the launch of the Suffolk Support and Advice Service earlier this month to help people access information or support relating to debt, benefits, housing or employment.

Citizens Advice Suffolk Alliance, which includes the eight Citizens Advice Bureaus across Suffolk, and Anglia Care Trust and Ipswich Housing Action Group are delivering advice and support to people through a single phone line.

The phonenumber is funded by Suffolk Public Sector Leaders and has been developed by Suffolk-wide partners on the Collaborative Communities Covid-19 Board, which is part of the Suffolk Resilience Forum.

People can contact the Suffolk Support and Advice Service on **0800 068 3131** between 9am to 5pm Monday to Friday or go to: <https://www.suffolk.gov.uk/coronavirus-covid-19/suffolk-advice-and-support-service/>

Do you enjoy and love flowers?



Would you be happy to share your love of flowers with others?

Norman and Dave our church wardens open your village church daily to provide a quiet place for any villagers or visitors to enjoy. Flowers help provide an atmosphere of calm. Some villagers like to bring flowers into our church to remember the loss of a loved one.

If you feel you would like to help by providing some flowers once a year from your garden please email Sue Cole at sacol44@yahoo.co.uk

Your help will be appreciated.

Sue Cole



Tania Jones Accountancy

friendly, professional, qualified
accountancy services

• **Bookkeeping** • **Accounts** • **Tax Returns**

t: 01359 241105 m: 07702 830001

e: tania@taniajones.co.uk



Cockfield CEVCP School
Cockfield
Bury St Edmunds
Suffolk IP30 0LA

Tel & Fax 01284 828287
E-mail: ad-
min@cockfield.suffolk.sch.uk

Dear Green Links Readers,

A lovely poem to share with you from three children in Willow Class.

Spring is here.

*Tulips bursting through the soggy green grass,
Pink and yellow blossom growing like popcorn,
Bluebells feel like cuddly teddy bears.*

*Spring is sunny but then
Rain pitter-patters and the sky is dark and gloomy,
A stripe of colour in the sky,
the rainbow has come.
The rainbow says hello to Spring as she looks up into the sky.*

*Oak trees grow and wave their hands around.
Cornflowers appear and trees grab leaves.
Fields of seeds jump from the ground.
The seeds would ask you to eat them.*

By Jaxon, Alexa and RJ
Year 3 (aged 7-8 years)

Cockfield W.I.



March Meeting Report

It may have been held via Zoom but both Suzanne and I were so pleased to resume writing an agenda for our March Birthday Meeting. Sixteen members took part. There was much to discuss relating to the documents we had received from NFWI about the proposed changes to the Constitution. These changes were necessary due to problems arising from not being able to hold meetings during the pandemic in the normal way. The new flexible arrangements allow members to take part and vote by using virtual platforms, email, post and telephone while unable to attend meetings physically.

Several members have booked tickets for a Zoom events held by Suffolk on Your Sofa and for the virtual Federation Annual Meeting to be held on Saturday 11th April at 10.30am. As well as the usual business matters we will have two speakers Zooming in Dr Chris Smith, Consultant Microbiologist/Virologist at Cambridge University and Historian, Simon Gregor, Denman Home Lecturer talking about Cambridge Colleges.

Weather permitting it is hoped to arrange small garden meetings of six members when lockdown restrictions are lifted in April and of course tea and cake will be available.

Brenda C

KARLS COMPUTER SERVICES

**HAVING PROBLEMS WITH INSTALLING BROADBAND?
OR NETWORKING OR NEED A NEW COMPUTER/LAPTOP,
VIRUS PROBLEMS, 1 ON 1 LESSONS OR JUST AN UPGRADE
GIVE ME A CALL**

19 Hervey Road, B.S.E, IP33 2DN

TEL: 01284 700337 MOB: 07717 842913
www.karlscomputerservices.co.uk
EMAIL:-karl@karlscomputerservices.co.uk

STEPHEN GREEN CARPETS

Quality Carpets & Vinyl's Supplied & Fitted
All Aspects taken care of Gripper - Glue - Underlay

Free Quotations

PHONE 07970 488851

EMAIL: SGRENCARP@AOL.CO.UK



Vision Safety

Confused by the maze of Health and Safety legislation affecting your business? Call us now for experienced common sense advice from experienced health and safety consultants.

Who can:

- Assist with your Covid 19 compliance
- Provide pragmatic health and safety advice,
- Deliver expert health & safety training including e-learning,
- Provide competent construction health and safety advice in compliance with CDM2015,
- Conduct thorough health and safety audits,
- Take lead for accident investigation and support,
- Can support your all year round health & safety requirements,
- Provide assistance in obtaining SSIP accreditations,
- Will answer all your health & safety questions, including help with tenders.
- Provide occupational health services,

Call Tony now on: 07485 089848

Email: Visionsafety@gmx.com

Victor Keyton

Most makes of lawnmowers serviced,
sharpened, repaired
Ride On or Walk Behind
Collection/Delivery Available
Free Estimates

Pruners,
loppers,
shears etc.
sharpened

01284 828264 or 07860 762424
Smithwood Green Cockfield



TOMLINSON GROUND CARE



JOHN DEERE

Horticultural & Garden Machinery Suppliers

Sales Service Parts Repairs Toys

Ride on mowers from £1599 Inc vat

Walk behind petrol & battery mowers from £199 Inc vat

Strimmers, hedge cutters, blowers, chainsaws etc.

Garden tools, paddock & turf machinery

Service & repair of all makes

Set in over 20 acres – Try before you buy

Established in Buxhall since 1991 – Call our friendly team for advice



Brettenham Road, Buxhall, Stowmarket IP14 3DL

01449 736060 www.tomlinsongroundcare.co.uk

AL-KO

EGO

ECHO

WEIBANG

KH

Kevin Hollings KITCHEN STUDIO

Unit 14 Lodge Works,

Stowmarket Road,

Old Newton,

IP14 4EE

01449 257160

info@kevinhollingskitchens.co.uk

www.kevinhollings.com



Independent
Living Service

Home Adaptations Grants of up to £30,000



Home from
Hospital



Disabled
Facilities



Minor
Adaptations



Terminal Illness
/ End of Life



Living with
Dementia



One Step Closer
to Home

New service to support residents to live independently and safely in their homes

Babergh District Council 'Independent Living Service' has been developed to help improve the quality of life of the districts' most vulnerable adults, young people and children.

The new service will offer advice and support where home adaptations, big or small, are needed to help residents live independently, safely and comfortably in their own homes, for as long as possible.

It will also assist residents with a disability, or those who may need adaptations to their home due to changes in their health, via the Disabled Facilities Grants (DFG) and the councils' Minor Adaptation Grants Scheme processes from application to completion of works.

Proposals to move the service in-house will allow the councils to ensure that the service is right for the residents across the district – with better control in the management of allocation of budgets and the processing of applications.

Cllr Jan Osborne Babergh District Council cabinet member for housing said: 'Bringing this vital service in-house will give us greater flexibility in supporting our residents. This new service will allow us to provide a more efficient and cost-effective service. Poor health is generally unplanned, and not something that you can prepare for. This new way of working will help us to directly support those with unplanned and long-term health issues or anyone needing additional support.

The Independent Living service will help us enable more of our residents to remain in their homes and live more independently. Bringing the service in-house will, in the long-term, help to reduce demands on Suffolk's care system and the NHS – cutting down on the time residents need to spend in hospital.'

Sometimes work needs to be carried out quickly and our teams will ensure that the processes in place allows residents to return to the comfort of their own home, and a safe and secure environment.

The new service will:

- Raise the quality of life, supporting residents to remain in their home independently and safely
- Improve the processing time for Disabled Facilities Grants (DFG) applications and associated works
- Increase the annual number of applications completed
- Reduced demand on the wider Suffolk care systems
- Help to identify the best option to meet the applicants' needs
- Provide help and support to complete DFG application forms
- Carry out home surveys
- Help source reputable local contractors
- Apply for planning permission and building control consent – if required

The Independent Living Service will work in partnership with Independent Living Suffolk to provide a high standard supportive network that will facilitate independence at home. In addition to offering signposting, financial and relocation assistance across the district, the service will enable each authority to tailor their provision to meet the changing needs of their communities.

Suffolk County Council will be the first point of contact – and residents needing advice, guidance, or support can start the process by using the contact details below.

Email: ILS@Suffolk.gov.uk

Call: [0800 121 7711](tel:08001217711) for an assessment by therapy staff.

Once an assessment has been carried out by Suffolk County Council therapy staff, a recommendation will be made on the home adaptations and support needed.

Independent Living Service

Grants for home adaptations

www.babergh.gov.uk
www.midsuffolk.gov.uk

Grants available between £1,000 - £30,000

For more information
Email: ILS@suffolk.gov.uk
Call 0800 121 7711



Town & Country Interiors

All aspects of building work undertaken.

Extensions, renovations, kitchens, bathrooms and bedrooms.

Please call 01284 828 592 or 01787 282 353 or visit our website www.tcisuffolk.co.uk



NEW FARM SHOP

- Local Produce
- Fruit and Veg
- Delicatessen
- Butchers
- Wines, cordials, soft drinks

Tel: 01284 386015

www.hennesseylifestyle.co.uk

info@hennesseylifestyle.co.uk

Overland Business Park, Sudbury Road,
Bury St Edmunds, IP30 0UL

BRADNAMS TREE SERVICES

All aspects of tree surgery undertaken

Hedges expertly managed

Free Estimates

Stuart Bradnam BSc RRD

Call 01284 388756

PERFECT PRESSING

IRONING PILING UP?

HELP NEEDED WITH SPRING CLEANING?

- Reliable Ironing, Laundering & Cleaning Service
- Collected & Delivered Promptly
- One Off, or on a Regular Basis

Please contact Allie on 07732 111802 or email

info@perfectpressing.co.uk

www.perfectpressing.co.uk



Cockfield Community Council News April 2021

The clocks will be going forward on and around the time you are reading this, and all being well, the shops will re opening on 12 April. However as we are all aware we are not yet in a position to arrange any meaningful community events other than a monthly Speed Quiz (see elsewhere in this edition for details.)

Nonetheless the Government COVID roadmap is very helpful in planning terms and again by the time you read this Community Council Trustees will have met in their March meeting when the main agenda item will have been the year ahead. So do please look out for further announcements.

In the meantime if you have any ideas or suggestions do please get in touch with our Secretary Janne Cutting-Keyton (janne@twerbs.co.uk) or 01284 828264



Fred Durso **Carpentry & Joinery**



The Hermitage, Bury Road, Cockfield, Bury St Edmunds, IP30 0JL

Fitted Kitchens
All Types of Woodwork

Purpose Made Fitments
Free Estimates

Tel: 01284 828186 Mob: 07790 479064
e-mail: freddurso41@gmail.com



Dear Neighbour

How nice to be getting longer hours of daylight after the Covid-restricting dark nights of winter! Children and parents are free of the burden of home-schooling tasks, but we know that, despite vaccinations, we are not out of the pandemic wood yet. However, hope and holidays are on the distant horizon. While this is good news, we must not let our guard down to Covid or the criminals who would seek to exploit us as we tentatively step out of lockdown. How easy it is to accidentally leave a car unlocked or a garage door open overnight or not be alert to some new internet or telephone scam. We must remain suspicious – that 'Bitcoin investment opportunity', that seemingly innocent request for 'just three pounds' to re-deliver a parcel. Staggeringly, almost one-in-five UK citizens have been a victim of a cybercrime and 36% of those did lose money to a scammer. Another statistic of interest is that on-line shopping fraud has increased by 30% during the pandemic. In light of these facts, it is maybe not surprising that in a recent poll, 39% of those surveyed were more concerned about cybercrime than physical crime in our society.

Remember the line, 'If something seems too good to be true, it usually is.'

For information and advice to keep you safe see www.suffolk.police.uk/advice .

Remember 'crime cannot flourish in a community that cares', so be on the alert and be watchful in looking after yourself and your neighbours.

Neighbourhood Watch Coordinator
Scheme 180: Dukes Meadow, Cockfield



LAVENHAM TENNIS CLUB 2021

The new club year starts at the on the 1st of April, and due to the lock down restricting the use of the courts, the club is offering a reduction in the fees for existing and new members for the 2021 – 2022 season.

Club nights are normally held each Tuesday and Friday evenings from 6.00pm on the courts at the recreation ground off Bridge Street Road, Lavenham, however at the moment we are not sure when these will commence. There are also plans to have tennis sessions on Sunday afternoons; details will be posted on our web site. The club is a member of the Halstead and District League and matches for men, ladies and mixed teams are held through the summer months, as well as teams competing in their Winter League. We also have our own club tournament and host social events during the summer. Our coach Kris Jenkins is available to offer individual or group coaching sessions.

New members are always welcome, information and Application Forms can be found on the club web-site www.Clubspark.lta.org.uk/LavenhamLawnTennisClub

Cockfield Community Broadcasts

In February 2015 we introduced a new email system to broadcast information to our community on events, activities and other topics of interest. This system evolved from the original eVine system and has a number of advantages including the ability for recipients to control their own subscription.

Our broadcasts sit alongside Green Links and the website as key methods of engaging with our community. For example when events are published in Green Links, we are able to use the broadcasts to let you know of updates and changes as they happen.

So we really want as many people as possible to subscribe to receive our broadcasts. Of course not all emails will be of interest to every subscriber. But since the introduction of the new system we have issued 135 broadcasts - an average of around 5 per month - so it is not a significant addition to the number of emails you already receive.

To subscribe, please visit our website at www.cockfield.org.uk and follow the link in the footer of any webpage. If you have any questions or concerns please contact me at neilka@btinternet.com.

Neil Ashton

Dear Friends

It is over a year since the country first went into lockdown and we are once again enjoying that great feast of Easter. Last year we were unable to be present in our church buildings and we had to do something that went against many of our instincts – we had to lock them up!

I am very pleased to announce that we will be holding an Easter Sunday service on 4th April in Cockfield Church, and welcome you to join with us to celebrate the resurrection of our Lord Jesus Christ. It will be absolutely wonderful to sit in church once again, to see the beauty of the flowers prepared so lovingly by our volunteer flower arrangers and to see friends that we may not have seen for some time.

As I've been thinking and planning for Easter Sunday, my thoughts have very much been with those who are anxious and alone at this time. The hope of the future as we come out of lockdown is perhaps not as real to some as it is to others. There are those that cannot imagine what it will be like to be back mingling with others; and feel that it will still be unsafe.

I believe that there will be a time in the not-to-distant future when we will be able to meet up again without our masks, when we will be able to hug, shake hands and share meals together. The Easter hope is one of new life that follows death, and I for one am getting ready to embrace life with all that I have and all that I have been given.

The Lord is risen: He is risen indeed! Alleluia!

Yours in Christ

Sharon

Revd Canon Sharon Potter

Revsharon2@gmail.com 01284 828599 or 07825 086063

Cockfield Benefice Services – April 2021

please see website for up-to-date information

All services are conducted in line with the coronavirus guidance issued by the Church of England, for more information visit <https://www.churchofengland.org/resources/coronavirus-covid-19-guidance>

All 10am services will be made available on the benefice facebook page https://www.facebook.com/cockfieldbenefice	
4 th April - Easter Day	10am Communion - Cockfield
11 th April – Easter 2	10am Morning Prayer – Cockfield
18 th April – Easter 3	10am Communion - Cockfield
25 th April – Easter 4	10am Worshipping Together - Bradfield St George

A service of Celtic Morning Prayer is held every Tuesday at Cockfield at 9am
Please note these services may be subject to change – for up-to-date service times see



Andy's Jet Force

- All drainage work undertaken, from block drains to new drains
- CCTV surveys
- High pressure water jetting services
- Patios and driveways cleaned
- Septic tanks and treatment plants emptied, serviced and installed

Andrew Waldock
jefforce@mail.com
T 01284 763952 M 07772 751645
www.andysjetforce.co.uk



Complete Gas,
Oil & LpG
Installations.

T: 01787 247540

E: info@grdplumbingandheating.co.uk



Burnerserve Ltd

Maintenance, Repair
and Servicing
for Oil Fired Boilers
and AGA Cookers.

**Oftec Registered Engineers,
Local, Reliable, Professional.**

T: 01787 247540

E: info@burnerserve.co.uk

W: www.burnerserve.co.uk



Unit 5 Norman Way, Lavenham, Suffolk CO10 9PY



Your local
tree surgeon
based in Bury
St. Edmunds

Gorilla Tree Services is your local tree care company that you can trust for all kinds of arboricultural services. We are passionate about trees, their environment and the work we do with them.

Do you want a beautiful looking estate with healthy trees and plants?
Contact us today to discuss our services.

M: 07851 459 734 T: 01284 810 027

E: info@gorillatreeservices.co.uk

www.gorillatreeservices.co.uk



- Tree felling
- Tree surgery & stump removal
- Crown raise and reduction
- Crown thinning
- Pollarding & formative pruning
- Hedging & pruning
- Green waste removal
- Chipper hire with operator
- Storm / Wind damages trees
- Phone line clearing

Our team of advisers is still here to help you and give free, impartial advice. You can get in touch by phone or email or check our website for further information.



Call us:

Sudbury: 01787 321400

Suffolk 0808 278 7868

England: 0800 144 88 48, Textphone: 18001 0800 144 8884



Email: advice@sudburycab.org.uk

Website: <https://www.citizensadvice.org.uk>



Sudbury
& District

Local **HANDYMAN SERVICES**

Kitchen Fitting	Bathrooms	Plumbing	Minor Electrical
Worktops	Shower Rooms	- New Taps	- Plug Sockets
Sinks and Taps	Utility Rooms	- Outside Taps	- Light Switches
Tiling	Toilets	- New Radiators	- Light Fittings
Flat Pack Furniture Assembly	Interior Painting and Decorating		
Garage/Rubbish Clearance	Garden - Decking, Sheds and Bases		
Bespoke Shelving and Storage			

Getting your house ready for sale, or letting, we can do all those little jobs you have been putting off

Telephone Paul on 01284 827402

Mobile 07505 881034

DBS Checked ✓ Public Liability Insurance ✓ Clean and Tidy ✓
Prompt and Efficient ✓ Attention to Detail ✓ Pet Friendly ✓

ALL ASPECTS LANDSCAPING
01284624022 – 07391253048
WWW.ALLASPECTSLANDSCAPING.CO
CALL NOW FOR A FREE NON OBLIGATION QUOTE



Proud members of
Checkatrade.com
Where reputation matters

We cover all hard and soft landscaping with many years of experience
FENCING -DRIVEWAYS - PATHS AND PATIOS-BLOCK PAVING - GARDEN GATES AND WALLS -TURFING AND SEEDING-GARDEN CLEARANCES-DIGGER WORK -CURB STONES-ALL TREE WORK AND HEDGE CUTTING-GRASS CUTTING LARGE/ SMALL AREAS

QUALITY HOMECARE

Are you, or do you know of someone that would benefit from having qualified and local care at home? A friendly, regular face you can look forward to seeing and having company with whilst receiving professional support.

Any daytime/evening duties (personal care, appointments, cooking, cleaning, shopping, laundry, gardening) undertaken to a high standard by a Level 2 qualified Health and Social Care domiciliary carer.

Limited spaces. References available on request.

For further information contact Linda: **07419335762**



S.E.P PAINTERS

For all your Painting & Decorating requirements
Fully professional service. Prompt, efficient, reliable.

No job too big or too small. Dulux Accredited
Competitive prices. Free Quotations. City & Guilds qualified.

Phone Andy on: 01787 375824

Mobile: 07748 800701 or 07802 613902

Email: andy@seppainters.co.uk

VISIT OUR WEB SITE ON www.seppainters.co.uk

Lavenham Library

Opening Hours

Monday – 10-1
Tuesday - 10-1 and 2-4
Thursday - 10-1 and 2-4
Friday - 10-1 and 2-4
Saturday - 10-1
Sunday & Wednesday - Closed

Plan from 12 April – Browsing in the library

This was written in March so things may have changed before this was published but our plan is to reintroduce browsing and use of our public computer from 12 April. We will still close earlier most days to allow time for additional cleaning and sorting of books.

We do have limits on numbers at any one time but you can also use our Select and Collect service – details on our website.

It is a legal requirement to wear a mask and to provide details for the government's Test and Trace programme. Books are quarantined for 72 hours on return and please use the self-service machine to issue and return books as this will minimise staff handling. Feel free to ask us questions or chat – talking to our customers is very important to us!

(These services are subject to any changes in the government Coronavirus restrictions)



Lavenham Family Treasure Hunt – closing date extended to 10 April

Suffolk Libraries Day was held in March and we held a Family Treasure Hunt. This has proved popular so we have extended the closing date to allow families to take part in the school holidays. There is a prize draw for all correct entries with prizes ranging from afternoon tea for 2 at Lavenham Blue Vintage Tea Rooms and lots of Easter eggs. Grateful thanks to Lavenham Blue for this brilliant prize.

Pick up a form from the library or visit our donation page, leave a message and we will email the form to you

<https://www.goldengiving.com/fundraising/Lavenhamtreasurehunt>

Did you know that Suffolk Libraries is a charity?

We run Suffolk's library service and our aim is to make life better for communities across our county. We've been doing this throughout COVID-19, but the pandemic has been tough for us too. All proceeds from the Treasure Hunt and any donations you can make will go direct to help us continue our work.

Phone A Friend – our NEW Service

Our Phone a Friend service offers regular phone calls to anyone who is:

- An older person; feeling isolated; struggling during lockdown or anyone else who would benefit from a friendly chat and someone to talk to.
- Calls are made by library volunteers and are all DBS and reference checked. If you or someone you know would like a call, please contact phoneafriend@suffolklibraries.co.uk

Check our Facebook page for our weekly StoryTime session as well as Lego challenges and Family Crafts.

Contact Details

Lavenham Library, Lavenham Village Hall, Church St, Lavenham CO10 9QT

Tel No: 01787 247729

www.suffolklibraries.co.uk

Email: lavenham.library@suffolklibraries.co.uk

Suffolk Libraries HMRC charity number XT34476



FIELD COMPOST LTD

We'll Help Your Garden Grow



Composts
Manure
Soil Improvers
Soil
Bark
Woodchip
Mulch
Sand and Gravel
Lawn Care

www.fieldcompost.co.uk

sales@fieldcompost.co.uk

01440 966966

JP Services

Sleepers

Timber

Scaffold Boards

Oak Barrels supplied

07970 559251

www.jp-services.info

Our team of advisers is still here to help you and give free, impartial advice. You can get in touch by phone or email or check our website for further information.



Call us:

Sudbury: 01787 321400

Suffolk 0808 278 7868

England: 0800 144 88 48, Textphone: 18001 0800 144 8884



Email: advice@sudburycab.org.uk

Website: <https://www.citizensadvice.org.uk>



Sudbury
& District





THORPE LANDSCAPING & GARDENING SERVICES

Contact Gavin on 07484 511 804

- To include a regular maintenance package for clients.
- Garden design.
- All soft landscaping, including turfing, seeding, planting etc.
- Hard landscaping, including Patios, walls, decking, driveways, fencing, all types of gates.
- Garden maintenance from hedge cutting, grass cutting, pruning, weeding.

PS

PAUL SAINSBURY

RESTORATION & BUILDING

**With over 20 years
experience in restoration
and all aspects of building**

**Free Estimates
Mobile 07785 582556
Email: enq@paul-sainsbury.co.uk**

A N GILLAM

Building

All aspects of roofing, chimney work, Lime plastering & rendering.
Chimney sweep

Free quotes - No job too small,

The Mouse House, Bradfield St Clare, IP30 0EL

Tel 01284 388508 Mob 07961 878564

KEVIN SEGGIE Electrical Services

30 Years Experience

Part P Qualified ECA Member No Job too small

Domestic/ Commercial/ Industrial Work undertaken

Burglar Alarms fitted Insurance testing

Free Estimates Fully Guaranteed

Tel: 01284 830786 Mobile: 07768 108157

e-mail: kevinseggie@yahoo.com

Higher Hats

Est. 2013

to hire / or buy
hundreds of hats, hatinators and fascinators. every shade and
hue of beautiful hats from the stylishly simple to the
outrageously show stopping.
hats for weddings, days at the races, graduations,
garden parties, regattas or just because.

phone Caroline Mccleave at higher hats to
arrange an appointment at our premises near
Lavenham.

07867 768732 / 01284 828841

'How a hat makes you feel is what a hat is all about.' Philip Treacy

SUFFOLK REVIVE A DRIVE

Would you like your drive or patio restored to a newly laid finish.

Improve both the appearance and value of your property.

HIGH PERFORMANCE PRESSURE CLEANING

PATHS, PATIOS, DRIVEWAYS, WALLS, GARDEN FURNITURE

DECKING, TENNIS COURTS, STABLES, SWIMMING POOLS and MORE

RE-POINTING, RE-SANDING AND SEALING ALSO AVAILABLE

TARMAC RE-DRESSED - REPAIRS UNDERTAKEN

Phone for a FREE quotation Tel: MARK 01284 828294 or 07833 582636



All types of electrical work covered from changing a light fitting to a complete re-wire.

- New circuits • Fuse board upgrades • House re-wires
- Lighting design • New Kitchen wiring • Changing light fittings
- Garden lighting • Alarm systems • Smoke alarms
- Heating controls • Commercial electrics • PAT testing
- Electrical condition testing and reporting • Certification • Fault finding
- Emergency call outs • Free advice, quotations and estimates

Call Steve on 07961 576677 or 01284 828484
 steveroberts101@outlook.com



**Your door-to-door laundry service
 & wet cleaning with
 Lagoon® Advanced Care**
*The green cleaning revolution for
 your clothes*

Opening Hours: Mon-Fri 8am-5pm

**Unit 12 Lady Lane Industrial Estate, Crockatt Road,
 Hadleigh IP7 6BQ**

Tel: 01473 558 448

e-mail: sales@pressganglaundry.com

www.pressganglaundry.com





Todds Removals

& Todd Storage

a reliable local service you can trust

*Removals
Storage*

*Packing materials
Packing service*

*UK, Europe and beyond
Home or Business*

Self Storage

Moving?

Call us on **01787 377 489**

www.todds-removals.co.uk



Mem No: 1027



Leon Brown

Arb-Agri Contracting

Tel: 01359 408521

Mobile Number: 07552393830

e-mail : leonbrown.28@hotmail.co.uk


**** Tree Surgery Services ****

- * Dead Wooding & Crown Lifting
- * Felling & Sectional Dismantling
- * Woodland Management
- * Crown Reductions
- * Hedge Cutting
- * Chipping
- * Firewood
- * Garden & Site Clearance
- * General Ground Maintenance

PLUMBING - AIR CON - HEATING
BENTLEY
-GROUP.co.uk

Tel 07929 333356
enquiries@bentley-group.co.uk

SPECIALISTS IN OIL BOILERS, SERVICE, REPAIR & REPLACEMENT

- 
- Oil tank replacement
 - Hot water cylinders serviced, repaired and replaced
 - Heating service repair, replacement and upgrade
 - Bathroom/showers installed and all other general plumbing work
 - 95% breakdowns repaired within 1 hour on site - Fast response
 - All work guaranteed for a minimum of 12 months - parts and labour

Cockfield Community Classifieds

Adverts in CC Classifieds' are free to insert please send your copy to the editor at janne@twerbs.co.uk or 01284 828264 by the 15th of the month.

Green Links accepts no responsibility for the accuracy of any advert placed in Green Links and buyers must satisfy themselves of the quality or value of any item prior to purchase or collection.

Out of fuel? Emergency oil delivery required? Tank leaking?

CARGATE engineering

Priority Barns, Drinkstone Road, Gedding, Bury St Edmunds, IP30 0QE

We help customers stay warm around the clock!

Cargate Engineering is a family-run Oftec-registered business specialising in supplying emergency fuel to homes and businesses in remote areas.

Since being established in 1996, Cargate Engineering has also developed experience and skills that allow us to offer a varied and comprehensive list of services, including everything from routine pump station maintenance to regularly scheduled septic tank cleaning and emergency call outs for issues such as overflowing septic tanks and drainage blockages. In addition, we produce high quality CAD drawings, are experts in root ingress removal, and are licensed hazardous waste carriers, ensuring we can meet all your needs. We take pride in our ability to offer a bespoke and friendly service with effective results that will last.

- Emergency Small Load Fuel Delivery and Boiler Relight Service
- Emergency Oil Tank Pump Down and Loan Tank Service
- Tank Replacement Installation Service by Experienced Oftec Engineers
- Contaminated Fuel Uplift Service Meeting Full ADR regulations
- Tank Internals and Bund Sludge Cleaning Service
- Oil Spill - Loss - Validation and Remediation Works
- Decommission of Redundant Fuel Tanks and Fuel Buy Back Scheme



Excellent services at competitive prices...



Bury St Edmunds:
01284 386 538

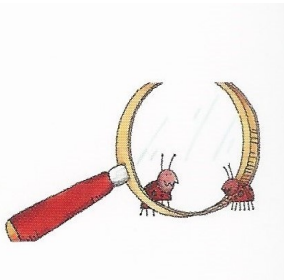
24/7 Emergency:
07974 495 362

Email:
info@cargateweb.co.uk

Website:
www.cargate-engineering.co.uk

ANGLIA PEST CONTROL

PASTOR GORDON HOLD



PEST CONTROL SERVICES since 1986

Call Will: 07919 356 155

Email:
iarwainbenadar77@gmail.com

Bridge Farm

Sudbury Road, Lavenham, CO10 9PJ

Tel: 01787 247522

From Race Horses to Rabbits...

.....we can help you take care of all your animal and poultry needs with our very competitive prices on feeds, supplements and varied types of bedding inc. Hay , Straw & Woodchips

**Why not come and visit our Wild Bird Centre?
There is so much to see!**

Also we sell Bottled Gas, Coal & Wood.
Dishwasher Salt, Mushroom Compost & Peat.



We can deliver locally
Open Monday - Saturday
9.00am - 5.00pm
Sunday
9.00am - 1.00pm

Congregational Church Corner

Some years ago, when living in London, I attended a Baptist Church with a small congregation and so it made a real change to attend the annual Maundy communion service where all of the churches in our group joined together for a united service. This service was always very well attended so much so that it was sometimes difficult to find a seat - unlike my own church where, if necessary, social distancing could be easily practised long before it became obligatory!

The communion service is unique in that it is the only service our Lord, Himself, instituted (Matthew 26:26-28) and instructed us to observe: "Do this in memory of me" (Luke 22:19) and in the days of the early church this instruction was taken seriously; for we read that they "continued steadfastly in the apostles' doctrine, fellowship, in breaking of bread (communion) and in prayers (Acts 2:42). But, some, it seems, did not approach the service with the reverence that it demanded; thus, a warning was introduced by the apostle Paul that who whoever takes part in the service "in an unworthy manner, eats and drinks judgment to himself, not discerning the Lord's body" (1 Corinthians 11:29). Paul was addressing those who misunderstood the purpose of the service, thinking that if they just ate the bread and drank the wine, God would be pleased with them and they would be safe from His judgment, even if they kept following their idolatrous and evil ways that was rife at that time. And so, with this in mind, Paul instructed those who attended the communion service to: "[prayerfully] examine themselves [and their relationship to Christ], and only when they have done so should they eat of the bread and drink of the wine" (1 Corinthians 11:28 - Amplified Bible).

This attitude of prayerful contrition echoes the Psalmist, who wrote: "Search me, O God, and know my heart: try me and know my thoughts: and see if there be any wicked way in me, and lead me in the way everlasting" (Psalm 139:23 & 24). A good attitude, indeed, to approach the communion service, and one that opens the way for the Holy Spirit to convict of sin, for which forgiveness can be sought and obtained from our Lord who can and does forgive sins (Acts 13:38). And if we do this, whether at Easter or at any other time, whether in small or large congregations, then taking part in the communion service will be well-pleasing to our Lord and a special blessing to us.

Bill Attwood

Enquiries Pastor Gordon Hold
01284 762663
ghold@gmail.com





Bury & District Pest Control

PEST CONTROL SPECIALISTS

Domestic, Farm and Commercial premises

No job too small - Contracts welcome

Effective control solutions for:

- Insects
- Wasps
- Ants
- Rodents
- Moles
- Hornets
- Rabbits
- Squirrels
- Flies
- Birds etc...

25yrs Experience of infestation control



For a total Professional friendly local service

Call: 01284 220096
or
01359 232745

info@burystedmundspestcontrol.co.uk
www.burystedmundspestcontrol.co.uk

MOT



IN
COCKFIELD

+ MOTOR VEHICLE
SERVICE + REPAIRS

W.A WATTS

SINCE 2017

A U T O M O T I V E

M: 07825 744 974

T: 01284 828 325

wawattsautomotive@gmail.com

Unit 1, Peppers Hall, Old Hall Lane, Cross
Green, Cockfield, IP30 0LQ

Nicholson Executive Travel

Professional Chauffeur Service

Airports and Seaports

Business Travel

Any UK Destination

Accounts Welcomed

Tel: 01359 232648

07850 370465

roger.nicholson1964@gmail.com

To advertise your
business or services in
Green Links
please contact our
Advertising Manager
Sue Harrison
at
sue.harrison42@gmail.com

Announcements

Do you have an announcement you would like included here?
There is no charge for any announcements
Please contact the Editor Janne Cutting-Keyton on
01284 828264 or janne@twerbs.co.uk

**Special cakes for
special celebrations**

Jean Banker

www.amazingcakesbyjean.co.uk



01359 241135



Green Matters caters for domestic and commercial clients offering:

- Grass Cutting
- Turf Laying
- Pruning
- Planting
- Garden Clearance
- Hedge Cutting
- Restoring and Maintaining
- Advice on all garden aspects
- Fully Insured
- Environment Agency Registered



☎ 01284 728044 📞 07941 640560
✉ greenmattersgardenservices@gmail.com

BMW

Best value independent servicing in East Anglia

John Gagen Vehicle Services

Over 25 Years **BMW** experience
Full Diagnostic Facilities
MOT Testing
Sympathetic to all older vehicles
Collection and delivery available

**Unit 2 Peppers Hall, Cross Green,
Cockfield, IP30 0LH
Tel 01284 827404 daytime
Mobile 07969 367640**

Wavelength Aerials

Aerials • Satellite & TV Systems

Neat & Discreet Installation + Maintenance + Repair

For a free quote contact us on 01449 678 653 / 07828 085 294



Supply and wall-mounting
of Plasma & LCD TVs

info@wavelengthaerials.co.uk
www.wavelengthaerials.co.uk

DAVID FOURACRE

Your Local Painters & Decorators

Interior & Exterior

All Aspects of Work Undertaken from Surface Preparation/Repair
to Final High Quality Finish

For Advice & Free Quotation please call

01449 736283 Mobile: 07810 482311

or e-mail: yoursafehands@gmail.com

Professional Chimney Sweeping & Stove Installation

Chimney Matters

Town and Country

Mobile : 07767 864127

Phone: 01284 789663

www.chimneymatters.co.uk



- Open fires, Wood burners swept and serviced for maximum efficiency.
- Wood and Multi fuel Stoves installed.
- Certificates issued.
- Cows and Bird guards fitted.
- Fully insured.



Walnut Tree Designs

BESPOKE CURTAINS & BLINDS

Free design consultation in your own home- Complete made-to-measure service for all your soft furnishings requirements

*CUSHIONS - FABRICS - TRIMS-
POLES - UPHOLSTERY - PELMETS
- HEADBOARDS - VALENCES - VE-
NETIAN & ROLLER BLINDS*

*Call Viki, Angela or Terri Oxley to
arrange a free consultation*

Tel: 01284 828263

M: 078269 30011

e-mail: walnuttreedesigns@gmail.com



VANITY FUR
DOG GROOMING

LUXURY DOG GROOMING

From a full groom to a simple wash & dry

**ALL DOGS ARE PAMPERED AT
VANITY FUR!**

For more information contact **Charlotte**

01284 827089

www.vanity-fur-doggrooming.co.uk

Two A's, Hoggards Green, Stanningfield,
Bury St Edmunds, IP29 4RG



PAUL THE PLASTERER

All aspects of plastering work undertaken
No job too small



Fully qualified, Clean, Honest and reliable
Tradesman

15 Years experience

Call Paul – 01284 830887/ 07958 229559

Lawshall Village, Bury St Edmunds IP29 4PW



Free
estimates

== *W. A. Deacon* ==
Funeral Services



*An Independent Family Company,
dedicated to your service.
Established over fifty years.*

Golden Charter pre-paid arrangements available.
Private Chapel of Rest

Norman Way, High Street, Lavenham,
Suffolk, CO10 9PY.

24-Hour Telephone Service

01787 248282 & 248147

SEPTIC TANK EMPTYING AND DRAIN CLEANING

Tank emptying from £80

A K SERVICES

Ramsey Road Hadleigh

01473 822694
07891341645
Available 24/7

No callout charge for
emergencies

WINDOWS CLEANED AND GARDENS TIDIED

Call Craig for a free quote and introductory discount

01284 827110 / 07816 932878

brightgreen22@gmail.com

www.brightandgreen.co.uk

All work fully insured

BRIGHTGREEN

NUNNAWAYS JETTING SERVICE



Soakaway Services
Drains Unblocked
Septic Tank Servicing
Driveways/Patios cleaned
Installation services available

24/7

**CALL TODAY on 01359 232716 or
Mobile 07941 523498**

Rothwell's Carpet Cleaning

Carpet Cleaning & Stone Floor, Upholstery, Rugs

A few points that make us stand out,

Rothwell's has been in business since 1993

We're an honest local family firm.

Our large truck mounted machines mean
more cleaning & drying power
for the best results possible.

Members of both the NCCA and TACCA.

We will move the furniture.

100% satisfaction or it's FREE.

*Call Oliver and Max Campbell
for expert help today.*

01638 428 060

www.Rothwells.biz

GARDENER

Local gardener seeks
domestic work

Over 17 years experience

- Lawn treatment
- Lawn cutting
- Weeding
- Pruning
- Hedge cutting
- General Garden
Maintenance

Please contact Mr Cheng
Pope on

07736072083 or

kaiwan1010@gmail.com

CJ Computer Services

Repairs - Upgrades - Custom Build Computers

Reasonable Charges - On Site Service - Fully Insured

Fully Qualified Technician - One 2 One Tuition - Lap-Top Sales

Wireless Broadband Set-up and Secured

Chris 01359 271772 or 07717 604180 chris@cjcomputerservices.biz

Ventanilla Blinds

Rollers Verticals Romans Pleated
Wooden & Metal Venetians Sheer Rollers
Conservatory blinds Blackout blinds
Perfect fit Pleated, Roller & Venetian
Awnings, Garden sails & Roller curtains

01787 313677 or 07966 371963

CHIMNEY SWEEP

ECO SWEEP CHIMNEY SERVICES

- NEW POWER SWEEPING METHOD USED FOR A MORE THOROUGH CHIMNEY CLEAN THAN BRUSHES.
- INDUSTRIAL HEPA FILTERED VACUUM.
- FULLY INSURED.
- INSURANCE RECOGNIZED CERTIFICATES ISSUED.
- SPOTLESS, RELIABLE AND FRIENDLY SERVICE.
- ALL CHIMNEYS, WOODBURNERS, AGA, BOILER FLUES SWEPT.
- GUILD OF MASTER SWEEPS CERTIFICATED MEMBER.



TEL. 01359 232335

TIME FOR YOU™

DOMESTIC CLEANING

Are you tired of cleaning?



We have the
right cleaner
waiting
to help
you.

Regular - Weekly - Cleaner

01359 258991

Typically £13 per hour

www.timeforyousuffolk.co.uk



R W SERVICES

PROPERTY & GARDEN MAINTENANCE

All aspects of property maintenance covered.
Garden Design & Construction, Painting & Decorating
Roofing, Carpentry, Groundwork etc.

Free quotations Fully Insured References available

Rod Williams 01284 828965
Mobile 0775 2626261

Local tradesmen with integrity



Oil-fired boiler engineer

Mark Smith (OFTEC Registered)

Fully trained in both domestic and light commercial boilers.

All repairs, servicing and commissioning undertaken by
a friendly and efficient Cockfield based engineer.



**Registered
Business**

Competitive prices

Tel: 01284 827446



**Registered
Technician**



TARLING FENCING

FENCING AND GROUNDCARE SPECIALISTS

Equestrian
Agricultural
Domestic
Gate installation
Landscaping
Groundcare

**Contact John for a free quotation:
01359 242496 or 07590 580512
tarlingfencing@outlook.com**



**We specialise in Precision and Civil Engineering
With over 30 years experience.**

We cover a wide range of manufacturing needs.
Including CNC Milling and Turning,
Structural Steels (CE Accredited),
Welding Fabrication and Installation.

For more about us please visit our website
www.grahamparishengineering.co.uk

Contact us on 01284 828118 or
Email parisheng@btconnect.com

Cockfield Contacts

October 2020 Web

CATEY Pre-School	Teresa Rutterford	catey@cockfield.org.uk
Cockfield Carpet Bowls Club	June Pettit	carpet.bowls@cockfield.org.uk
Cockfield Cemetery	Ralph Turner	828201
Cockfield Charities	Tony Box	charities@cockfield.org.uk
Cockfield Congregational Church	Pastor Gordon Hold	01284 762663
Cockfield Football Club	Joe Brinkley	football@cockfield.org.uk
Cockfield Netball Club	Lindsee Summers	netball@cockfield.org.uk
Cockfield Post Office	Barbara Turner	01284 828201
Cockfield Primary School	Trudie Harkin Headteacher	admin@cockfield.suffolk.sch.uk
Community Council Secretary	Janne Cutting-Keyton	community.council@cockfield.org.uk
Computer Circle, e-news	Neil Ashton	computer.circle@cockfield.org.uk
County Council - Local Member	Robert Lindsay	07738 264087
		robert.lindsay@suffolk.gov.uk
Dentist	Lavenham Dental Practice	01787 247058
	Paul Rolph & Associates	01787 247046
District Council	Babergh offices	0300 1234000
Local Member	Clive Arthey	01787 211316
		clive.arthey@babergh.gov.uk
Local Member	Margaret Maybury	01787 464358
		Margaret.Maybury@babergh.gov.uk
Doctors	Long Melford Practice	01787 378226
Earls Meador/Bruffs Line	Rodney Williams	earls.meadow@cockfield.org.uk
Footpath Warden	Ralph Turner	footpaths@cockfield.org.uk
Friends of Cockfield School FOCSA	Mark Aston	fosca@cockfield.org.uk
Green Links - Village Magazine	Janne Cutting-Keyton	green.links@cockfield.org.uk
Mini - Bus Hire (Office Hours only)	Carl Brinkley	minibus@cockfield.co.uk
Parish Council Clerk	Steve Ball	parish.council@cockfield.org.uk
Pavilion Administrator (C.C. Council)	Rodney Williams	pavilion@cockfield.org.uk
Pharmacy	The Lavenham Pharmacy	01787 247284
Stanningfield & District Agric. Club	David Simpson	stannag.club@cockfield.org.uk
St. Peters Church	Rev. Sharon Potter	01284 828599
Church Wardens	Norman Kelly/David Smith	church.warden@cockfield.org.uk
Village Hall - Bookings	June Pettit	village.hall@cockfield.org.uk
Secretary	Vera Shepherd	village.hall@cockfield.org.uk
Village Recorder	Brenda Dyer	recorder@cockfield.org.uk
Women's Institute Secretary	Suzanne Veal	wi@cockfield.org.uk



Kathryn Vernon