

# Green Links

January 2023

The Monthly Village Magazine of Cockfield

theWI  
INSPIRING WOMEN

## Winter Warmers Saturday 14th January 12.00- 2pm



We would like people in Cockfield to join us for a  
Winter Warmer Soup Lunch in January.  
Why not bring a friend, partner or the whole family.  
Join us at the Village Hall  
It's only a donation of £1.00

## Green Links Copy Deadline!

Please note all copy for the February issue must be  
with me by 15th January please

Janne Cutting-Keyton, Newholme, Smithwood Green,  
Cockfield. IP30 0JQ  
01284 828264 or [janne@twerbs.co.uk](mailto:janne@twerbs.co.uk)

### Would you like to Subscribe to Green Links

There are currently over 400  
subscribers to Green Links in  
Cockfield and the  
surrounding villages.

An annual subscription is  
£3.00 payable in August.

The magazine is  
delivered to your door by a  
team of local volunteer  
distributors.

Please contact  
01284 828264  
for further details

### Cockfield Village Hall

Available for hire at very  
reasonable rates

Please contact  
June Pettit  
for bookings or for  
further details  
[cockfield.org.uk/villagehall](http://cockfield.org.uk/villagehall)

Please spread the  
word about our  
super village hall,  
huge car park  
and full facilities

### GREEN LINKS ADVERTISING

To place an advertisement in Green Links  
or enquire about our rates please contact

Sue Harrison at  
[sue.harrison42@gmail.com](mailto:sue.harrison42@gmail.com)

# Green Links



The Monthly Village Magazine of Cockfield  
Edition 4- No 187 January 2023

Chairman and Distribution  
Editor  
Secretary  
Advertising Manager

David Simpson  
Janne Cutting-Keyton  
Morag Kelly  
Sue Harrison

A New Year and an apt time to say thank you, thank you to all those who give their time to make Cockfield the lovely place it is but especially to the Green Links distributors without whom we wouldn't get Green Links through our doors every month come rain or come shine - thank you all.

It looks like the New Year will bring financial challenges to many of us, the Tips and Tricks pages this month features use of our freezers and using leftovers, I am quite sure there are things we all do without thinking that would help others live more economically or less wastefully, please send them in so we can all benefit from your knowledge.

In addition to the WI's Coffee Mornings, held on the 4th Thursday of the month they are trialling a Winter Warmer Soup Lunch, if it is well supported than I am sure it will continue throughout the colder months it's open to anyone so do pop along to the village hall on the 14th.

As the weather turns colder please lend an eye to your neighbours, people don't have to be elderly to appreciate an offer of kindness and we all need a hand at some point in life.

May I wish you all a very safe, happy and healthy New Year.

Janne

[www.cockfield.org.uk](http://www.cockfield.org.uk)

The Editor and Management Committee cannot be held responsible for the accuracy of articles or for any of the claims made by any advertiser and reserve the right to alter, shorten or refuse any items submitted for publication. All copyrights acknowledged.



Cockfield Community  
Council

# Bingo night!

Friday 17th  
February  
Cockfield Village  
Hall  
Doors open 7pm  
for a 7.30 start



Tea, coffee, bar  
and bar snacks,  
cakes  
Cash only



Families  
welcome  
Free entry  
Cash  
prizes



# **New Year's Day Hangover Hike Sunday 1st January 2023**

**Come and join the Community Council  
for a pleasant hike around the  
footpaths of Cockfield.**

Meet in the Village Hall car park 10.45am  
- the walk will last about an hour and a  
half, refreshment will be available on our  
return to the Hall.

**All welcome but children must be  
accompanied by an adult and  
dogs must be kept on leads at all  
times.**

If its pouring the walk will be cancelled



## Summary Report of the Ordinary Meeting of the Parish Council held on the Thursday 27th October 2022

*(Please note: 'To obtain a copy of the full formal minutes of this meeting, please email the Parish Clerk, parish.council@cockfield.org.uk')*

**BMSDC Public Realm Land:** The Clerk confirmed he had received a response from SCC Cabinet member responsible for Highways, confirming that SCC Highways would now be pursuing the matter of the problematic fence line at the entrance to Dukes Meadow and hopefully obtain a solution.

**Local Needs Housing:** The Clerk has completed the application for 'Granting of a new right of common and application for registration of a right in the commons register', however the Declaration needs to be signed by a JP or practising Solicitor.

**Greens Management:** The Clerk was instructed to defer the contractor painting the bandstand until the spring due to adverse weather conditions.

**Pavilion & Shed:** The Clerk was also asked to seek quotations to paint the Pavilion & Shed next Spring. The Parish Council agreed it will purchase and supply the paint.

**Earls Meadow:** Following requests from residents the Clerk confirmed that he has received BMSDC's written approval to site a new Dog Litter Bin in Jeffreys Green and that orders had been placed for the equipment / emptying etc.

**Playground:** Cllr Golding confirmed that he had carried out some landscape maintenance at the play equipment, but needed further top soil to fill under the slides of the multi-activity centres which, was weather dependant. The Clerk has contacted APL Ltd who will be returning to site, in the near future, to adjust tensions on the Zip Wire and tighten some fixings on the see-saw. However, the equipment remains safe to use as confirmed by our specialist inspector.

**Parish Paths:** Cllr Webster confirmed that he had fixed 'Discover Suffolk' footpath plaques onto SCC footpaths.

**Pavilion:** The Clerk confirmed he had met a locksmith at the Pavilion to provide a quote to replace the broken lock, and is awaiting the quote.

**Highways and Emergencies:**

The Chairman expressed thanks to local residents for their assistance in repairing the pothole on the corner of Cross Green.

**Planning: Applications Received for Parish Council Consultation:**

**DC/22/05023:** Planning Application - Construction of a field access: Field West of Corner Farm, Lawshall Road, Cockfield, IP30 0JP (**The Parish Council has no comment on this application which is outside the Parish**)

**DC/22/05151:** Notification of Works to Trees in a Conservation Area - Fell 1No. Cherry (T1): Oak House, Cross Green, Cockfield, Bury St Edmunds Suffolk IP30 0LG. (**The Parish Council Supports the Application**).

**DC/22/04803:** Householder Application - Erection of a single storey side extension and relocation of oil tank: Water End Cottage, Cross Green, Cockfield, Bury St Edmunds Suffolk IP30 0LG (**The Parish Council has No Objections to this Application**).

**DC/22/04804:** Application for Listed Building Consent - Erection of a single storey side extension and relocation of oil tank: Water End Cottage, Cross Green, Cockfield, Bury St Edmunds Suffolk IP30 0LG (**The Parish Council has no comment on this Application**).

**Planning Decisions notified by BMSDC:**

**DC/21/06568:** Planning Application. Erection of 3no dwellings and associated parking and landscaping. Land At Junction of Bury Road and Felsham Road, Great Green, Cockfield, IP30 0HJ. **Decision: Planning Permission has been Refused.**

**DC/22/02966:** Planning Application - Retention of change of use of land to garden curtilage. Change of use and conversion of and alterations to existing ancillary (detached) outbuilding to form additional guest accommodation to host dwelling 2 Willow Bridge Cottages, Willow Bridge, Cockfield, IP30 0JA. **Decision: Planning Permission has been Approved.**

**DC/22/03982:** Householder Application - Erection of a two-storey side extension (conversion of existing machinery building) Windsor Green Farm Barn, Windsor Green, Cockfield, Bury St Edmunds Suffolk IP30 0LY. **Decision: Planning Permission has been Refused.**

**Village Hall Car Park:** It was agreed that to keep on top of village hall car park maintenance issues, a contractor be appointed for regular works instead of ad-hoc visits.

**Allotments:** With the interest in allotments increasing, work is progressing with creating an improved entrance, track, car parking, shelter and hard standing, the purchase of allotment marker posts, timber path edging, weed suppressant material/pegs etc to create allotment paths.

**Repairs to the Pavilion - Klargester:** It was agreed to proceed with maintenance work as identified by the specialists.

**Neighbourhood CIL:** The Clerk provided Cllrs with a progress update on the Bus Shelter project which is likely to be completed in February 2023. This is weather and resource availability dependant. Residents should note during the work only limited provision for the bus stop will be available.

**Greens Management:** Cllr Morley advised that a new Oak tree has been planted on the Great Green as the Queen Elizabeth Memorial Tree with a commemorative plaque; also that the area around the pond has been cleared.

**Glebe Land:** Cllr Webster confirmed that an article has been published in GL advertising the Allotments for rental and several positive responses have been received.

**Earls Meadow:** The new bench in Jeffreys Green has now been installed and councillors noted that a low post and rail fence needs to be erected along the top of the river bank in front of the bench, to provide additional protection.

**Cemetery:** Cllr Turner advised that he is awaiting a quotation for a new Cemetery gate post to replace a rotten one.

**Parish Paths:** Cllr Webster advised that he had reported trip hazards on the Abbey footpath to SCC and advised that following receipt of complaints about the footbridge over the stream on the Abbey footpath, he had inspected the bridge and reported its poor condition to SCC and was awaiting a response.

**Pavilion:** The Clerk was asked to investigate the installation of a smart meter.

**Speed awareness** - Cllr Turner advised that the Parish Council's oldest SID will need replacing next year and requested provision be considered for a new one in the 2023/24 budget & precept.

**Local Needs Housing:** Cllr Morley advised that the final phase of the Jeffreys Green open market housing is progressing well and will be completed in the Spring 2023.

**Highways and Emergencies:** Cllr Cutting-Keyton reported that the letter D was missing from the Cockfield Sign on the Felsham Rd. Cllr Turner was asked to source a replacement letter / sign as SCC had no budget for this work.

**King Charles Coronation:** The Council agreed to explore what the village could do as a celebration event.

**EV Charge point** - The clerk to carry out initial investigation into what would be involved for an EV charging point at the village hall, for discussion at next meeting.

The Parish Council may be contacted through the Clerk,  
Steve Ball by email at:  
[parish.council@cockfield.org.uk](mailto:parish.council@cockfield.org.uk)  
or 01284 828987 10am - 4pm please

Next Meetings - The next Ordinary Meetings of the Council will be held on Thursday 26th January and Thursday 23rd February 2023 at 7.30pm in Cockfield Village Hall



recycle

Your real

Christmas tree

In Cockfield

at Hall Farm

(concrete hardstanding junction of  
Perrydown/Howe Lane)

Trees can be left at this collection point between Thursday 5<sup>th</sup> Jan  
and Wednesday 11<sup>th</sup> Jan.

Collection will be made from 6.30am on Thursday 12<sup>th</sup> January.

Trees must be less than 7' tall & must have all decorations, stands &  
pots removed. Please call 0300 1234 000 (Option 4) for further details.



# United Charities of Cockfield

## Help is Available

With inflation at its highest level for decades and fuel, electricity costs and food soaring to unprecedented levels many people will be starting to cut back on spending and for some it will be almost impossible to cope. Many organisations are available to provide support and these include The United Charities of Cockfield.

The United Charities can give small grants for fuel, clothing and food to people living within Cockfield parish and can also help with some medical, educational and job seeking support. In addition, there is a limited supply of logs from Earl's Meadow available for those who have wood burners or open fires.

The trustees have had no recent requests for any sort of help. There are limitations on who may benefit from the Charities, but we shall consider any requests **in the utmost confidence**. Please contact the trustees if you need help or if you are aware of any individual or family living in Cockfield who could benefit from some assistance.

[charities@cockfield.org.uk](mailto:charities@cockfield.org.uk)



# Cockfield United Football Club

The 2021-22 season ended up being the first season to be completed since the 2018-19 season. That's quite a statement. Now, before I go on I need to explain a few things, so you'll have to pay attention now!. Cockfield United play in the Macron Suffolk and Ipswich League (SIL), which was founded in 1896 (yes, really!). Until the start of this season the SIL consisted of a Senior Division, and Divisions 1-4 for first teams, and three Leagues A-C for Reserve teams. However, for the 2022-23 season there was a national reorganisation of the entire national football pyramid, and the SIL now consists of a Senior Division and then divisions 1-6. Now, to put things in a national perspective the SIL Senior Division is at Level 11 (the bottom level) of the English football pyramid. The Premier League is, unsurprisingly, Level 1. For reasons that elude me entirely, from Level 5 downwards they are known as Steps, so the National League, which is one below the fully professional EFL League 2 (for readers of my vintage this used to be called League Division 4) is known as Step 1. Confused yet? If you're not, then I'm not explaining this properly! So the SIL is at Step 7, or Level 11 of the entire pyramid. In other words, proper grass roots football! That's a lot to take in I grant you. You could maybe say we are the strongest Level, because we are holding up the entire pyramid. AFC Sudbury, by way of comparison, play in a League which is at Step 4, or Level 8 of the national pyramid. In 2021 they reached the First Round of the FA Cup and their Cup tie against Colchester United was shown live on BBC 2 and in 78 countries. Hope for us yet! It could be that the reason England haven't won anything since 1966 is because everyone is exhausted from trying to understand the pyramid system. Okay, you can go back to Netflix now, that's the tricky bit out of the way. Now back to the footy.

Of course, during the Pandemic a lot of players had moved on in their lives, or moved to other clubs, but essentially we still had a strong core of players in the 1st XI and could field a pretty stable team throughout the season. The 1st XI started the season in Division 2 of the SIL. The Reserves started the season in the A League of the reserve teams, which was a tough league. The Reserves struggled to put out a team with more than three or four faces from the week before, so it was difficult to get any continuity and stability. The priority is always the 1st team, and the Reserves would inevitably lose players up to the 1st match day squad to fill in any gaps.

Our training sessions are held at the King Edwards's School on their floodlit artificial pitch from September onwards. Attendance from the first squad

was generally excellent and was reflected in winning performances on Saturdays, but there were generally only a handful of Reserve team players. The season suffered from a high number of postponements, probably due to the 'Pingdemic', and this resulted in a very long season, since the SIL had to re-schedule these fixtures midweek, and that meant the longer evenings of May. By the time the season ended on 10 May (for the Reserves) the First XI team had finished second in Division 2 and thus gained promotion to Division 1, which was a tremendous achievement for Tom and his squad of players. The Reserves had a long, tough season in the A League and finished bottom of the League, although they did have a much better second half of the season.

As I mentioned earlier there was a reorganisation of the SIL at the end of the season, and our 1st XI now play in Division 1, and the Reserves in Division 4, which is more appropriate to their Level of ability. So far results have been excellent for the 1sts and they now sit in 3rd place in the division. The Reserves are faring a lot better in Division 4 and are 7th in the table out of 13 teams, so we are optimistic for the rest of the season.

Apart from completing the season we were able to hold our end of season awards social night in May, and we were finally able to make presentations, some going back to the 2018-19 season. It was great to see the pavilion packed out and it was a good night, definitely a chance to put the last two years behind us. On 30 July we held the Billy Buckle Cup, an annual fundraiser for local charities. For quite a few club members (including the writer of this article) it was the first time they'd had a chance to enjoy this event due to you know what. The day consisted of a charity invitational tournament, along with a raffle, bar, barbecue, bouncy castle and live music. We raised funds to help a local resident who had been stricken with a serious illness, as well as raising much needed funds for the club

That brings things up to date with where we are now. We'd like to thank our sponsors for their continued support, particularly our shirt sponsor Hewick's Haulage, who have supported the club for a good number of years now. Incidentally, if anyone would like to sponsor the club, do please get in touch. Next time we'll have look at other aspects of the club, meet the 1st team coach and introduce you to some of the players. See you then!

Jeremy Gardner  
Match Day Services Manager

# Division One

# League Table

Pos	Team	P	W	D	L	GD	PTS
1	Tattingstone United F.C. First (Sat)	11	7	4	0	12	25
2	Stowupland Falcons F.C. First (Sat)	11	5	6	0	14	21
3	Cockfield United F.C. First (Sat)	10	6	0	4	20	18
4	Bramford Road Old Boys F.C. First (Sat)	10	5	3	2	11	18
5	Stanton F.C. First (Sat)	11	5	3	3	7	18
6	Somersham F.C. First (Sat)	11	5	3	3	7	18
7	A.F.C. Kesgrave First	11	5	3	3	2	18
8	Bacton United 89 F.C. First (Sat)	11	5	2	4	17	17
9	Achilles F.C. First (Sat)	13	3	4	6	-13	13
10	Grundisburgh F.C. First	12	3	3	6	-7	12
11	Woolverstone United F.C. First	11	2	3	6	-13	9
12	Capel Plough F.C. First (Sat)	12	1	4	7	-25	7
13	Wenhaston United F.C. First	10	1	0	9	-32	3

# COCKFIELD POST OFFICE & STORES **XMAS OPENING DAYS**



Saturday 24 Dec	Normal opening
Sunday 25 Dec	Closed
Monday 26 Dec	Closed
Tuesday 27 Dec	Closed
Wednesday 28 Dec	Closed
Thursday 29 Dec	Normal opening
Friday 30 Dec	Normal opening
Saturday 31 Dec	Normal opening
Sunday 01 Jan	Closed
Monday 02 Jan	Closed
Tuesday 03 Jan	Back to normal

**Barbara and Ralph would like to wish everyone a wonderful, healthy, happy Christmas and New Year**

# Cockfield W.I.

## December's Meeting



Our December meeting was a great success and an early Christmas celebration. We welcomed a ukulele band called 'What No Cake' to entertain us. Their suggestion that audience participation in the singing would enhance the experience, proved to be true! We were treated to an eclectic range of songs, most of which we knew, including some Christmas songs. It was a great start to the festive season! I think everyone joined in enthusiastically! We also had mince pies, delicious cake and mulled wine, which certainly also added to the enjoyment! In summary, together with some friends and partners, we had a delightful evening.



As the end of the year draws near we are thinking about our plans for next year.

In January our speaker is Jenny Smith from Veganuary in Bury St Edmunds. She can be contacted at [nomnomnosh.uk](http://nomnomnosh.uk) for further details. At the moment she can provide her products ready frozen, a regular monthly supper club and is available to cater for private functions. She hopes to recommence her weekly cook to order take away service when the current economic situation improves.

In February our speaker is Jenny Easton a member of our WI, who is a weaver and spinner! Apparently 'It all started with a donkey' (when her son was given a sheep)! Jenny started in 1993 and has continued to make clothes from mostly sheep wool ever since! She belongs to the local Spinners Guild who meet monthly in Lavenham and highly recommends spinning as a very sociable hobby and, of course, it has always been eco-friendly!



In March, which is an open meeting, we celebrate our local WI birthday with our speaker Charles Garland, a local Suffolk lad, born in Bury St Edmunds, who will be telling us about the enormously successful and popular Dads' Army programme. Indeed the Nations favourite comedy! Charles Garland has been an actor, writer, composer, television director, producer and author.



He re-edited most of the classic comedy archive for the BBC, including Dads Army, Steptoe & Son, Are You Being Served?, Porridge, The Good Life and many others.

In April. We will be joined by some very experienced gardeners from Thorpe Morieux Gardening Club. It will be organised on the basis of Gardeners Question Time! Questions should be submitted as soon as possible to enable time for research, if needed! Lots of questions please!



We will also be finalising arrangements for a few visits during 2023 including a visit to at least one garden, a living museum, a collection of art work etc. Further details in January/February.

Continued over...

The village coffee morning we hold in the village hall each month is a great place to meet and have a chat! It is open to everyone and everyone is very welcome to share some lovely homemade cakes and biscuits, as well as tea and coffee. The next three Thursday coffee mornings are from 10.30 am until 12 noon and are on the 26<sup>th</sup> January, the 23<sup>rd</sup> February and the 23<sup>rd</sup> March 2023 in the Village Hall Committee room. Please come, we would love to see you!

We are also having a 'Winter Warmer' get together on Saturday 14<sup>th</sup> January, in the morning between 10.30 am and 12 noon, which will also be in the village hall committee room. Everyone is very welcome to have some delicious homemade soups and a chat for a donation of a £1.

We would like to say welcome to you if you have recently moved into the village and would love to meet you! Visitors are always very welcome to WI meetings and if you would like to come along, please contact [WI@cockfield.org.uk](mailto:WI@cockfield.org.uk)

We hope you enjoyed Christmas and we wish you all a very Happy New Year!

Joan Ball

## **Cockfield Community Coffee**

### **4th Thursday of the month**

**Hope to see you there**



**Cockfield Village Hall - Committee Room**

**10.30am - 12 noon**

**No Charge but donations are welcome**





**Cockfield CEVCP School**  
Cockfield  
Bury St Edmunds  
Suffolk IP30 0LA

Tel & Fax 01284 828287  
E-mail: [admin@cockfield.suffolk.sch.uk](mailto:admin@cockfield.suffolk.sch.uk)  
[www.cockfieldprimaryschool.co.uk](http://www.cockfieldprimaryschool.co.uk)

Head Teacher: Mrs Trudie Harkin

**We share, care and learn together**

Dear Readers,

Can you help please? We are collecting used stamps for the Motor Neurone Disease Association. If you have any stamps please pop them through the letter box, thank you.

We wish a wonderful new year; school starts again on the 4<sup>th</sup> Jan' 2023.

In the meantime, the children have shared with me some jokes which I'm going to pass on.

How do you fit 6 donkeys into a fire engine? Two in the front, two on the back and two on top shouting Eeyore Eeyore – From RJ

What do you call a fish with no eyes? A fsh. By Lilly

Why can't nose be 12cm long? Because it would be a foot! By Finley (one of my favourites)

Why did the boy throw a clock out of his window? He wanted to see time fly! By Charlie

Why aren't there are any games in the jungle? Because there are too many cheetahs. By Ava

What do you call a man with no shins? Kneel. By Tommy

Why do all actors say 'break a leg'? Because all movies have a cast. By Henry

How do you make an octopus laugh? With 8 tickles. Declan

How do fish know their weight? They have scales. Liam

Mrs Harkin  
Head teacher

Live in harmony with one another; be sympathetic, love as brothers, be compassionate and humble.  
1 Peter 3:8



## Tips and Tricks

Saving money, or at least not wasting it, is more important than ever especially as the winter approaches and we all have to cope with increased energy bills. This new page will feature a monthly tips. If you have a Tip or Trick to share please send them to [janne@twerbs.co.uk](mailto:janne@twerbs.co.uk)

### Freezer Savvy Savings

**Check out these easy hints to make the most of your freezer. They'll save you time, money and help reduce food waste. You'll also have a ready supply of handy ingredients for your meals over the festive season and into the new year**

#### Cheese

Slice or grate the cheese and place in a freezer bag. Hard cheeses freeze the best and try to use within 6–9 months. Grated cheese for [pizza toppings](#) or cooking can be added straight out of the bag without thawing.

#### Milk

Most types of milk can be frozen. Milk should only be frozen in air-tight, freezer-safe containers. Many milks may separate during freezing. Milk can safely stored frozen in the freezer for up to 6 months, but it's best if you can use it within 1 month of freezing.

Milk should be defrosted in the fridge as opposed to at room temperature to decrease the risk of bacterial growth. Alternatively, if you are planning to cook with frozen milk, you can defrost it directly in the pot or pan as you are cooking.

Frozen and defrosted milk is best suited for cooking, baking, or making [smoothies](#) as it may undergo some changes in texture that may make it grainy or having some fat separation.

#### Eggs

Don't freeze your eggs in the shell. Break them in a bowl and beat until the yolk and egg white is just about blended. Put the mix in an airtight container and label with the date and number of eggs used. Alternatively, use muffin tins as a mould and when the eggs are frozen, pop into a freezer bag.

Raw eggs can be frozen for up to 12 months, while cooked egg dishes should be thawed and reheated within 2–3 months

#### Mushrooms, broccoli and other veg

Vegetables such as mushrooms, avocados, spinach, rhubarb (yes, it is a vegetable!) beans, carrots, broccoli can all be frozen. If they naturally have a high-water content it's best for them to be pureed, sautéed, stewed or made into these easy freezer-friendly veg meals before freezing.

## **Mashed potato and sweet potato**

You can easily freeze cooked potatoes and mashed potato. Cool mash then you could either transfer all of it into a freezer bag/container or if you're feeling perhaps freeze individual servings by scooping out portions individually using an ice-cream scoop. Open freeze these on parchment paper for about an hour and then transfer into a freezer bag/container from there.

## **Cooked pasta**

Al dente cooked pasta freezes the best. When it's cooled, toss it with a little bit of olive oil to coat it lightly. The oil stops the pasta from sticking together. If you have sauce on your pasta, there's no need to do this. Place the pasta in a single layer on a baking sheet and place in the freezer for 1-2 hours. Then place the slightly frozen pasta into storage bags.

## **Bananas**

Peel your whole bananas or thick slices onto a tray and freeze until solid. Then transfer into a labelled resealable freezer bag, ensuring you remove any excess air before sealing. Frozen bananas are best used within six months.

## **Bread**

Bread can be frozen either whole or grated for up to three months. Use the breadcrumbs to coat chicken, make meatloaf or perhaps some burgers.

## **Butter**

Freeze butter in its original packaging right after you buy it, then pop in a freezer bag or container.

If stored properly, unsalted butter will stay fresh for 4–6 months, while salted butter can last up to a year.

Just be sure you freeze the butter before the “use by” date on the packaging. To thaw, leave frozen butter in the refrigerator overnight.

**As with all frozen foods, never re-freeze once thawed and don't forget to label and date everything as no one ever remembers when they were put there!**

*There are lots of websites with suggestions on how to use all your leftovers – try some this season!*

[www.bbc.co.uk/food/collections/leftovers](http://www.bbc.co.uk/food/collections/leftovers)

[www.jamieoliver.com/recipes/category/course/leftovers](http://www.jamieoliver.com/recipes/category/course/leftovers)

[www.allrecipes.com/gallery/best-foods-for-leftovers](http://www.allrecipes.com/gallery/best-foods-for-leftovers)

[www.bigoven.com/use-up-leftovers](http://www.bigoven.com/use-up-leftovers)

JL

## TIPS & RECIPES FOR USING LEFTOVERS

Refrigerate or freeze leftovers within 2 hours or as soon as they are cool. Cool leftovers quickly.

Before refrigerating or freezing, slice large cuts of meat & store in serving size packets.

Label leftovers with the date.

Check the fridge regularly and discard old leftovers. When in doubt throw it out!

Reheat leftovers until piping hot all the way through.

Never refreeze turkey if you started with a frozen rather than a fresh bird!

**Leftover turkey**, if you are fortunate enough to have turkey at Christmas, can be used to make other delicious meals. Chicken could be used instead. In the following recipe there are a lot of store cupboard ingredients but they go a long way & can be used for many recipes! They can also be varied within reason to suit your taste! Whatever spices you use in this sort of recipe, always gently cook before adding other ingredients to bring out the flavours!

### TURKEY TIKKA MASALA (Serves 4)

#### Ingredients

1 tbs Sunflower or vegetable oil

Onion, finely chopped

2 garlic cloves, crushed or finely grated

1 red chilli, deseeded & finely chopped

1 tsp cumin seeds

1 tsp ground coriander

½ tsp paprika

½ tsp ground turmeric

½ tsp garam masala

1 tbs tomato puree

400g can passata or tomatoes

1 tbs mango chutney

100g double cream

2 tbsp natural yogurt (optional)

About 600g leftover roast turkey cut into large chunks

Chopped coriander, toasted flaked almonds,

Cooked rice and garlic naan breads (optional) to serve



## Method

**Step 1:** Heat the oil in a casserole or shallow pan & fry the onions for 10 – 12 minutes on a medium heat until golden. Stir in the garlic, ginger, chilli & all the other spices, and cook gently for 2 more mins until the mixture resembles a paste. Stir in the tomato puree, passata or chopped tomatoes & the chutney & bring to a simmer. Cook for a further 10mins.

**Step 2:** Stir in most of the cream & yogurt (if using) and return the mixture to a simmer. Yogurt can curdle so heat very gently! Add the meat and continue to simmer until the meat is piping hot. Remove from the heat, drizzle over the remaining cream and stir through briefly. Scatter over some chopped coriander (optional) and flaked almonds. Serve with cooked rice and naan bread on the side.

## BUBBLE & SQUEAK (Serves 4)

This recipe brings back memories of childhood! This 'modern' version will look like a frittata!

### Ingredients

1 tbsp of vegetable or sunflower oil, duck or goose fat etc.

4 rashers of streaky bacon, chopped (optional not in the 50s!)

1 onion finely sliced (not in the 50s – it was just the potato & cabbage)

1 garlic clove (not in the 50s)

15 20 brussel sprouts, sliced or leftover cooked cabbage, shredded (previously seasoned)

400g cold leftover mashed potato (mine is made with a little butter & milk & previously seasoned).

### Method

**Step 1:** Melt the oil or fat in a non-stick pan, allow it to get quite hot & then add the chopped bacon (optional). As it begins to brown add the finely sliced onion and the garlic. Cook gently until the onion begins to soften. Garlic can burn & become bitter.

**Step 2:** Next add the sliced Brussel sprouts or shredded boiled cabbage & let it colour slightly. Takes about 5-6mins.

**Step 3:** Add 400g cold mashed potato. Work everything together in the pan and push it down so that the mixture covers the base of the pan.

**Step 4:** Allow the mixture to catch slightly on the base of the pan before turning it over & doing the same again. It's the bits of potato that catch in the pan that define the term 'bubble & squeak', so let the mixture colour a little!

**Step 5:** Cut into wedges and serve with anything you like!

Joan Ball

## Cross Green

Many of you may have noticed the new seat and planters which have been installed on Cross Green. As in a previous article concerning the Village Sign on Parsonage Green we thought that Village residents may be interested in the recent history of Cross Green.



In 1968 Ken Steward discovered a small Oak Tree near the old railway line which ran to the rear of Cross Green. Mr Steward at the time lived in Hope House and was then the proprietor of H. Waspe and Son the Agricultural Drainage Company which operated from premises on Loft Corner now occupied by Graham Parish Engineering. Mr Steward decided to plant the Oak Tree in the centre of Cross Green where the tree flourished for many years. However, as it matured the limbs began to split from the main trunk and unfortunately the tree was deemed to be unsafe. The ground on Cross Green is very stony and it was decided that this had contributed to the demise of the tree.

In 1997 Cross Green was purchased by the Ruffell family who generously transferred the ownership to the Parish Council. Under the ownership of the Parish Council it was decided, following advice, that the Oak Tree had to be removed.

Local residents were then consulted regarding a replacement and subsequently a Fastigate Beech was kindly donated and planted in 2006.





After a slow start the Beech Tree has begun to flourish. Dry seasons have meant that the tree needed to be watered regularly and thanks must go to Anthony Creasy and Trevor Jones for their perseverance to ensure the tree survived.

In 1990 Cockfield won the Babergh round of the Best Kept Village and a bench was presented to the Village which was placed on Cross Green.

Recently due to the deterioration of the original bench the Parish Council have purchased a 1.8m Hardwood Bench which has been inscribed with 'Cross Green 2023'. Thanks to Anthony Creasy and Rod Williams for securing the seat and planters.

The bench was purchased from Genesis Orwell Mencap a group which we continue to support. Genesis Orwell Mencap provides a range of high quality day care services in Ipswich, supporting adults and young people with learning or physical disabilities. They also operate social enterprises, including the manufacture of Genesis Garden Furniture.

The Parish Council are grateful to Anthony Creasy and Trevor Jones for their continued commitment to the maintenance and care of Cross Green.

RM



## Power cuts - Tips for being prepared

With the National Grid warning of possible 3 hour planned power cuts this winter due to the international energy crisis, and the increasing frequency of extreme weather events, this is a good time to think about being prepared for the occasions when we might experience a loss in electricity supply.

During Storm Eunice in February of this year two people said to me during phone calls that their mobile phone battery was running out and that they wouldn't be able to recharge them due to the power cuts caused by the high winds. For anyone in this situation it would mean they wouldn't be able to make any phone calls, whether in an emergency, or to keep in touch with vulnerable family members and friends. Also for those of us who rely on a smart phone for access to the internet and emails, these services would be unavailable too.

**Tip:** buy a portable power bank for charging your mobile phone. These are charged up from the mains via an adapter and will usually retain their charge for several weeks. For £20-£30 it is possible to buy a power bank that will charge a smart phone 2-4 times, depending on its size and capacity. Some bigger power banks can also charge a tablet or iPad.

**Tips:** For lighting during a power cut, check that you have a torch to hand (make sure you also have some spare batteries) and consider investing in a solar powered lantern; for having hot drinks make sure you have a flask to fill with hot water in advance.

Hopefully there won't be any power cuts this winter and we won't need to rely on these things, but they're a bit like insurance policies; essential to have when you really need them!

Finally to make sure that you receive email communications issued regarding any emergencies affecting Cockfield, make sure that you sign-up for the Cockfield Community Broadcast at [cockfield.org.uk](http://cockfield.org.uk)

Mark Webster, on behalf of Cockfield Parish Council

# BABERGH

## Christmas & New Year Waste Collection Schedule 2022-23



### Refuse (general rubbish) & recycling collections

Collections will take place as normal up to, and including, Friday 23 December 2022.

From Monday 26 December 2022 to Saturday 14 January 2023, refuse and recycling collections will be on an amended schedule.

	Usual collection date	Amended collection date	Change
Recycling	Monday 26 December 2022	Wednesday 28 December 2022	2 days later
	Tuesday 27 December 2022	Thursday 29 December 2022	2 days later
	Wednesday 28 December 2022	Friday 30 December 2022	2 days later
	Thursday 29 December 2022	Saturday 31 December 2022	2 days later
	Friday 30 December 2022	Tuesday 3 January 2023	4 days later
Refuse	Monday 2 January 2023	Wednesday 4 January 2023	2 days later
	Tuesday 3 January 2023	Thursday 5 January 2023	2 days later
	Wednesday 4 January 2023	Friday 6 January 2023	2 days later
	Thursday 5 January 2023	Saturday 7 January 2023	2 days later
	Friday 6 January 2023	Monday 9 January 2023	3 days later
Recycling	Monday 9 January 2023	Tuesday 10 January 2023	1 day later
	Tuesday 10 January 2023	Wednesday 11 January 2023	1 day later
	Wednesday 11 January 2023	Thursday 12 January 2023	1 day later
	Thursday 12 January 2023	Friday 13 January 2023	1 day later
	Friday 13 January 2023	Saturday 14 January 2023	1 day later

From Monday 16 January 2023, collections return to the normal refuse and recycling collection schedule.

### Garden waste (brown bin) collections

Collections will take place as normal up to, and including, Friday 23 December 2022.

There will be no garden waste collections during the weeks commencing 26 December 2022 and 2 January 2023.

From Monday 9 January 2023, collections return to the normal garden waste collection schedule.



### Please put your bin out by 6.30am

To check for delays and report a missed collection, please visit [www.babergh.gov.uk/waste-services](http://www.babergh.gov.uk/waste-services)  
Alternatively, phone 0300 1234 000 (option 4)

**This time of year is always so expensive, with presents to buy and heating bills going up. I've seen offers for 'Buy Now Pay Later' when I'm doing online shopping. It seems like a good way to spread the cost of some of the things I need to get for my family but how can I make sure I don't get into debt?**

With everything getting more expensive, this is a really difficult time for a lot of people, so it's sensible to be thinking about how you can manage. There are lots of things you can do to try and stay in control of your money.

Before you start spending, work out exactly what money you have coming in and going out each month. Be realistic about what you need for essentials like food and travel. Take a look at the budgeting tool on the Citizens Advice website, [www.citizensadvice.org.uk](http://www.citizensadvice.org.uk) This can help you set a budget you can stick to.

You'll also be able to find tips on how to reduce your regular living costs, which might be helpful if you're struggling to keep within your budget.

While it can be tempting to split payments with schemes like Buy Now Pay Later (BNPL), you'll need a plan to pay the money back. If you're using something like that repeatedly, you might be managing for now, but it could also be a sign that it's unaffordable in the long run. Keep a record of how much you owe in total.

Always make sure you understand what you're signing up for, how you'll make the repayments and what will happen if you can't pay on time. It's important to check the returns process for both the retailer and credit provider. Paying through BNPL may also affect the cost of postage returns if you've ordered online. The riskiest thing about it is that you're not guaranteed to be protected if something goes wrong. For example, you can't go to the Financial Ombudsman Service if you have a complaint.

If you find yourself turning to credit cards, your overdraft, or store cards for your spending, keep track of what you owe. You should prioritise paying your rent or mortgage, plus energy bills and Council Tax first, because not paying these has the most serious consequences.

On the Citizens Advice website, you can find information on what bills to prioritise and how to manage debts. There's also information on the support available for paying these and other bills.

If, like many during this crisis, you find you can't afford to reduce your debts after paying your priority bills and essentials, seek advice as soon as possible. If you need specific support or don't feel able to manage your situation alone, call our debt helpline: 0800 240 4420.

Everyone's circumstances are different, particularly when it comes to managing personal finances. Our advisers are here to help you find a way forward.

For information and advice on this or anything else, visit [www.citizensadvice.org.uk](http://www.citizensadvice.org.uk) or call Sudbury and District Citizens Advice on 01787 321400 and leave a message and someone will call you back when available. We will attempt three times to call you back, so please expect a call from a withheld number. Alternatively, contact us via email at [advice@sudburycab.org.uk](mailto:advice@sudburycab.org.uk) or by using the contact facility on our website, <https://www.sudburycab.org.uk/contact>

We are providing advice by telephone and email Monday – Thursday, 10am – 1pm.

## **Cost-of-Living Crisis**

If you are struggling with the cost-of-living crisis there is local welfare support available. Sudbury and District Citizens Advice is encouraging anyone having difficulties to call 01787 321400 or email [advice@sudburycab.org.uk](mailto:advice@sudburycab.org.uk). An adviser will call or email you to consider your situation and look at all the options.

We currently provide telephone advice between 10am and 3pm Monday to Thursday. A message can be left at any time, and we will get back to you as soon as possible. Please leave a brief message telling us what the issue is, together with your name and telephone number. We will attempt to call you three times. Please expect a call from a withheld number.

# Cockfield Community Council

## News

As we say goodbye to 2022 and welcome in 2023 the Community Council trustees have been busy putting together a program of events for everyone to enjoy. With people starting to get back to a more 'normal' life after the restrictions of the last couple of years, the trustees hope that 2023 will be the year to bring people back together in a social environment. A chance to meet new friends and catch up with old ones.

We start the year off on January 1st with the Hangover Hike. A guided walk around the village lasting approximately an hour and a half, meeting in the village hall car park at a very sensible time of 10.45. Everyone is welcome but children must be accompanied by an adult and dogs kept on leads. The walk will end back at the village hall where those that have worked up an appetite can buy bacon rolls, cake, tea and coffee. Last years walk was very successful, lots of enthusiasm and definitely lots of chatter, plus it's a great way to blow away the cobwebs and start the new year.

**Friday February 17th** will see a **Family Cash Bingo** night in the village hall following the success of our first bingo night in October 2021. Children are welcome but must be accompanied by an adult.

**Saturday March 25th** will be a **Quiz Night** again in the village hall, so plenty of time to get your team organised!

**Saturday April 8th (Easter Saturday)** family fun at the annual **Duck Race** held at Earls Meadow.

**Saturday May 6th** is the **Kings Coronation** and it is hoped to organise an event but is still in the planning phase.

**Saturday May 27th - Monday May 29th Cockfield Art Show** in the village hall.

**Saturday June 24th** to celebrate the summer solstice join us for a guided walk around the village followed by a **Summer Social** in the village hall.

A **Village Fete** is being planned for **July**.

Dig out your gingham ready for a **Barn Dance** in **September**.

Another chance to win with **Family Cash Bingo** in **October**

Test your knowledge with a **Quiz Evening** in **November**.

Cinema screenings will continue on the evening of the 4th Friday of each month in the village hall. But the **May Cinema Screening** will be a week earlier on **Friday 19th May** and the **December Screening on Friday 15th** .

A full program to mark on your new calendars and diaries.

More details for each event will be advertised in Green Links, on village notice boards, on posters around the village and on the community broadcasts as the date gets closer.

If you would like to help out at events but not commit to being a trustee you can register on the helpers list by email - [community.council@cockfield.org.uk](mailto:community.council@cockfield.org.uk) or phone our secretary Janne on 01284828264

Community broadcasts can be received by visiting [www.cockfield.org.uk](http://www.cockfield.org.uk) and following the link in the footer of any page. The broadcasts provide general information for residents including reminders of upcoming events and any last minute changes.

Report JP





**COCKFIELD COMMUNITY CINEMA PRESENTS  
MRS HARRIS GOES TO PARIS (PG)**

**Friday 27<sup>th</sup> January**

Cockfield Village Hall

Doors Open: 7pm – Film starts: 7:30pm

Tickets on the door

Adults: £4.50 / Under 16s: £3.00

Raffle, Refreshments & Licensed Bar available from 7pm



In partnership with the House of Dior, "Mrs. Harris Goes To Paris" tells the story of a widowed cleaning lady in 1950s London who falls madly in love with a couture Dior dress and decides that she must have one of her own. After she works, starves, and gambles to raise the funds to pursue her dream, she embarks on an adventure to Paris which will change not only her own outlook, but the very future of the House of Dior.

**MONTHLY SCREENINGS**

4<sup>TH</sup> FRIDAY OF THE MONTH FOR  
FUTURE SCREENINGS VISIT:

[www.cockfield.org.uk](http://www.cockfield.org.uk)

# Beauty by Megan

Megan is a Beauty Therapist with over 18 years' experience.  
I work from my log cabin in Hitcham.

In a peaceful, rural location and benefits from off-road parking! Treatments are by appointment only. Therefore you are guaranteed complete privacy and your treatment time is exclusively for you.

### **A variety of treatments include:**

Dermologica facials/Spray tanning/Waxing/Eye treatments/Jessica manicures & pedicures/Jessica Gel Nails/Foot health maintenance (nail trimming & hard skin removal)  
LVL Eyelash perming/Reflexology

Please phone for any enquiries or for a full price list.

**Megan Pryke** VTCT, BABTAC

**07876 717 008**

# Dance Fitness

*Lose yourself in the  
music find yourself in  
shape!*

Julie Goodsman  
Tele: 07815497952  
Email:  
jgoodsman@btinternet.com

Classes held every  
Wednesday 7-8pm  
Cockfield Village Hall  
Church Lane, Cockfield  
Bury St Edmunds  
IP30 0HA

£5.00  
Ages 16 & over!



## Betty & Bramble's

Professional Dog Grooming & K9 Care



*Making Your Dogs Our Business*

For more information, please contact

Lisa on New 

**07535 076726**

Bury Road, Cockfield, Bury St. Edmunds,  
Suffolk, IP30 0LB

 [www.bettyandbrambles.co.uk](http://www.bettyandbrambles.co.uk)

 @BettyAndBrambles



**Does anyone in your family need help coping with the challenges of living at home with long term health conditions?**

**Did you know grants are available?**

**Minor adaptation grants from £1,000 - £7,500**

**Disabled Facilities grants up to £30,000.**

**Small changes can sometimes make the greatest difference.**

**For more information**

Email: [adaptations@baberghmidsuffolk.gov.uk](mailto:adaptations@baberghmidsuffolk.gov.uk)

Visit: [www.ils-bms.org](http://www.ils-bms.org)

or call: 0300 1234000 - Option 3

The Independent Living Service (ILS) offers advice and support on home adaptations to Babergh & Mid Suffolk residents.

Independent  
**Living Service**



## Would you like to grow your own?

Since the acquisition by the Parish Council of Cockfield's former Glebeland, located between Mill Corner and Jeffreys' Green, work has been taking place to create a new village allotment. It is expected that 10 allotment plots will be available, hopefully by the end of the year, or early in 2023 at the latest, which will enable plot holders to prepare for next years growing season.

If you are a village resident and would like to register your interest for a plot, please do so by emailing [mark.cfield21@btinternet.com](mailto:mark.cfield21@btinternet.com) by 30th November. Further information will be provided to applicants in the coming weeks, but if you have any initial questions please include them in your email - thank you.

Mark Webster, on behalf of Cockfield Parish Council

### **BRADNAMS TREE SERVICES**

**All aspects of tree surgery undertaken  
Hedges expertly managed  
Free Estimates**

**Stuart Bradnam BSc RRD  
Call 01284 388756**

### **PERFECT PRESSING**

**IRONING PILING UP?**

**HELP NEEDED WITH SPRING CLEANING?**

- **Reliable Ironing, Laundering & Cleaning Service**
- **Collected & Delivered Promptly**
- **One Off, or on a Regular Basis**

**Please contact Allie on 07732 111802 or email**

**[info@perfectpressing.co.uk](mailto:info@perfectpressing.co.uk)**

**[www.perfectpressing.co.uk](http://www.perfectpressing.co.uk)**

# Children's Page January 2023

Happy NEW YEAR! I hope you had a good Christmas and now the New Year is here we may, just may, get some snow. Adults tend not to like the white stuff too much as it may make life more difficult for a while but usually children think its just so cool!

So in the hope that it does snow here's how you go about painting it!  
You will need food colouring and spray bottles or a pot and a paint brush or both, add a few drops of food colouring to some water the more colour you put in the deeper the colour will be, put the coloured water into the spray bottle or the pot or both, then spray or paint away. You can paint the lying show, snow balls or even your snowman, you can draw pictures in the snow ...



or bring a tray of snow indoors and have fun with it in the warm. Always ask your grown-up for permission first.

Have fun!





# HANDS UP NAIL STUDIO

Certified Nail Master with Diploma.

Only professional equipment. All the **tools are cleaned, disinfected, and surgically sterilised** after every customer ensuring no cross infection.

Manicure + gel polish £30    Pedicure + gel polish £35    Male Pedicure £35

Manicure includes filing, tag nails tidy, cuticle and dead skin removal.

Pedicure includes soak off bath, complete sole work, toenail work and cuticle removal.

Top Road, Rattlesden, Bury St Edmunds IP30 0SJ  
Tel 07889 448186 / [handsupmanicure@gmail.com](mailto:handsupmanicure@gmail.com)  
Bookings by appointment only



## WATSONS PLANTS

Watsons Plants is bursting with a beautiful array of perennial plants. The quality of our plants is second to none and we are confident they will be thriving in your garden for years to come.

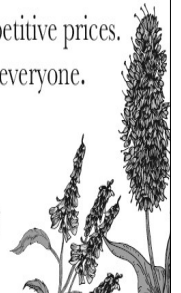
We have a substantial choice of quality shrubs and garden plants at hugely competitive prices.

For the discerning gardener or enthusiastic beginner, we have something for everyone.

[enquiries@watsonsplants.co.uk](mailto:enquiries@watsonsplants.co.uk)

[watsonsplants.co.uk](http://watsonsplants.co.uk)

Watsons Plants Ltd, Bury Road, Depden, Bury St Edmunds, Suffolk, IP29 4BU





We understand that bills aren't always the first thing on your mind but if you're worried about your finances, we want you to know you can talk to us about it.

In the last year we've helped over 320,000 customers stay on top of their bills. Our specially-trained team can help find a way forward, with a personalised plan made just for you. We can make sure you're on the right tariff, look at payment plans and point you towards other help and benefits to increase your household income.

The easiest way to get started is by completing our [Extra Care Assessment](https://betteroffcalculator.co.uk/calculator/new/step1) online <https://betteroffcalculator.co.uk/calculator/new/step1> Or you can speak to our Extra Care Support team on 0800 169 3630.

Whichever way you choose, we'll ask you a few simple questions about your situation and make a recommendation for how we can help. It's all part of our [WaterCare service](#).

### **How Extra Care Support can help you**

Here's a few examples of how we can help:

#### **Maximise your income and benefits**

As part of our [Extra Care Assessment](#), we'll check for ways to maximise your income by advising what benefits your household may be entitled to. We'll also let you know about any additional support you may be entitled to such as the Warm Home Discount Scheme.

We'd recommend seeing what other government support you might be able to get. There's information and advice on how to increase your income, as well as support for bills, housing and childcare costs.

#### **Get discounts of up to 50%**

If you pay measured charges through a water meter, we have a range of different tariffs available including [WaterSure](#) and [AquaCare Plus](#). And with our [LITE](#) or [Extra LITE](#) tariffs, you could get a discount of up to 50% on your water and sewerage charges, depending on your situation.

Dear Friends,

The difficulty with writing magazine articles in advance of being published is that you can't be sure about the hot topics in the world will be in a month's time! However, what is certain is that by the time you read this we will be in 2023. The start of a new year is often a time when we look back on the previous year and evaluate what we have (or have not!) achieved. We do this both personally and in the groups to which we belong.

As I look back on what we have been doing in Cockfield Church I have some lovely memories of the events and services that have been held in the building during 2022. We began with a lovely 12th night concert and feast of pulled pork rolls, where the church was almost full, and we had various local people perform for our entertainment. It was a fun evening! Later in the year whilst I was on sabbatical, 'Julie's flutes' group performed in the church, and then we had the local band 'the Emergers' in for a concert in October, which again was well attended.

We held our regular monthly pattern of services, where numbers have dropped a little as there are now more parishes in the benefice so more of a choice for worshippers! However, our fundraising events such as the summer lunch and the coffee morning and plant sale did extremely well with the local community's support.

As well as church services and events, we do offer pastoral support to anyone that needs it. And we don't just visit or support people who go to church. If you know of anyone who needs a visit then please do let me know, as we have pastoral visitors as well as the clergy team (myself and two curates) who are always willing and able to support people in our community.

I do hope that 2023 is a good year for us all, and I look forward to meeting with you at a service or event very soon.

Yours in Christ,


**Sharon**

Rev Canon Sharon Potter

revsharon2@gmail.com 01284-828599 or 0782508



## Cockfield Benefice Services & Events January 2023

Sunday 1 January 2 <sup>nd</sup> Sunday of Christmas	10am Benefice Communion CW – Bradfield St Clare
Sunday 8 January Epiphany Sunday	9.30am Said Communion BCP – Cockfield 11am Communion CW – Bradfield St George 4pm Praise and Worship – Gt Whelnetham
Sunday 15 January Epiphany 2	9.30am Communion CW – Stanningfield 10am Family@Church – Felsham 11am Communion CW – Cockfield 4pm Evening Prayer – Bradfield St Clare
Sunday 22 January Epiphany 3	9.30am Communion CW – Gt Whelnetham 10am Worshipping Together – Bradfield St George 10am Communion BCP - Gedding
 Saturday 28 January	Messy Church welcomes all families to come and join us for crafts, story, song and a delicious tea. Starts at 3pm and finishes around 5pm (venue tbc) For more details contact Canon Sharon at <a href="mailto:revsharon2@gmail.com">revsharon2@gmail.com</a> .
Sunday 29 January Candlemas/Growing Younger Sunday	10am Benefice Communion - Felsham

*Please note these services may be subject to change – for up-to-date service times see the benefice website at [www.cockfieldbenefice.com](http://www.cockfieldbenefice.com)*

A service of Celtic Morning Prayer is held every Tuesday at Cockfield at 9am  
 A prayer group meets via zoom every Wednesday at 2pm via zoom.  
 For more details contact Canon Sharon at [revsharon2@gmail.com](mailto:revsharon2@gmail.com)  
 tel: 01284 828599 or 078250 086063

# TIME FOR YOU™

DOMESTIC CLEANING

**Are you tired of cleaning?**



We have the  
right cleaner  
waiting  
to help  
you.

**Regular - Weekly - Cleaner**

01359 258991

Typically £15 per hour

[www.timeforyousuffolk.co.uk](http://www.timeforyousuffolk.co.uk)



## TOM'S OUTDOOR SERVICES

.... ————— ....  
School Leaver wanting to help you make your lives easier, I am here to provide outside services such as:

Dog walking, outdoor painting, leaf clearance, window cleaning, lawn upkeep, litter picking, garden watering, basic gardening care and weeding.

I also am happy to do dog sitting and any other pet related services. Feel free to contact me today.

07734740322

[tomsbusiness22@gmail.com](mailto:tomsbusiness22@gmail.com)

## GADD BROTHERS

TREES AND LANDSCAPES

### TREE WORK & ARBORICULTURAL SERVICES

Qualified and insured professionals undertaking all aspects of tree work, from dismantling mature dangerous trees to pruning and planting.



## WOOD FARM

### KILN DRIED FIREWOOD

Locally sourced hardwood timber from sites with felling licences to ensure sustainability. All logs are Kiln dried on site, 'Ready to Burn' certified with a moisture content of below 20%, to ensure clean and efficient burning.

01284 788794 • [info@gaddbrothers.co.uk](mailto:info@gaddbrothers.co.uk) • [gaddbrothers.co.uk](http://gaddbrothers.co.uk)

Wood Farm, Brand Road, Great Barton IP31 2NY

## KEVIN SEGGIE Electrical Services

30 Years Experience

NICEIC Part P reg'd    ECA Member    No Job too small  
Domestic/ Commercial/ Industrial Work undertaken  
Burglar Alarms fitted                      Insurance testing  
Free Estimates                                  Fully Guaranteed

Tel: 01284 830786    Mobile: 07768 108157

e-mail: kevinseggie@yahoo.com

## KARLS COMPUTER SERVICES

**HAVING PROBLEMS WITH INSTALLING BROADBAND?  
OR NETWORKING OR NEED A NEW COMPUTER/LAPTOP,  
VIRUS PROBLEMS, 1 ON 1 LESSONS OR JUST AN UPGRADE  
GIVE ME A CALL**

**19 Hervey Road, B.S.E, IP33 2DN**

**TEL: 01284 700337    MOB: 07717 842913**

**www.karlscomputerservices.co.uk**

**EMAIL:-karl@karlscomputerservices.co.uk**

## GD Civils And Construction Ltd

At GD civils & construction Ltd we offer nothing but a 1st class service always making sure we meet our customers expectations.

GD CIVILS & CONSTRUCTION LTD has a proven track record of innovative designs, effective problem solving and attention to detail and our goal is to meet and exceed the expectations of every customer.

We take on all types of jobs from small domestic work to larger commercial projects, all carried out to the highest standards and at very competitive prices.

**07582 287728**

Email: george@gdcivils.co.uk  
Stowmarket, Suffolk

*Any Occasion*  
**BOTTLE**

Choose your favourite personalised Champagne gift from Say It With Champers!

Personalised Champagne for any occasion

Now Only **£40.74** with free delivery

Anniversary, Birthday, Wedding and many more available!

Order Online  
sayitwithchampers.co.uk

Or Call  
0333 772 1368

# KH

# Kevin Hollings KITCHEN STUDIO

Unit 14 Lodge Works,  
Stowmarket Road,  
Old Newton,  
IP14 4EE  
01449 257160  
info@kevinhollingskitchens.co.uk  
www.kevinhollings.com



## TOMLINSON GROUND CARE



JOHN DEERE

**Horticultural & Garden Machinery Suppliers**

**Sales Service Parts Repairs Toys**

Ride on mowers from £1799 inc vat

Walk behind petrol & battery mowers from £249 inc vat

Strimmers, hedge cutters, blowers, chainsaws etc

Garden tools, paddock & turf machinery

Service & repair all makes



**Set in over 20 acres - Try before you buy**

**Established in Buxhall since 1991 - We hope to see you soon**

Brettenham Road, Buxhall, Stowmarket IP14 3DL  
01449 736060 [www.tomlinsongroundcare.co.uk](http://www.tomlinsongroundcare.co.uk)

**AL-KO**

**EGO**

**ECHO**

**WEIBANG**

**Opening Hours**

Monday	10.00 – 1.00
Tuesday	10.00 – 1.00 & 2.00 – 5.00
Thursday	10.00 – 1.00 & 2.00 – 5.00
Friday	10.00 – 1.00 & 2.00 – 5.00
Saturday	10.00 – 2.00
Sunday & Wednesday	CLOSED

**Top Time - Christmas Wreath Making**

Thank you to everyone who came to our Christmas Wreath Making event in December.



Special thanks to Diane & Jean for organising such a fun and successful fundraiser for our library.

So many creative designs and a lot of fun was had by all!



Top Time is our sociable drop-in group for all adults. We hold fortnightly Tuesday meetings from 2.30-4.00pm. We provide a wide range of events and activities that cover areas such as health & well-being and informative talks. Top Time returns in next year on Tuesday 10<sup>th</sup> January.

**Baby Bounce/Tot Rock:** Bring your tots and join us in the library for a fun session of active songs and rhymes for under 5s held every **Thursday from 2pm-3pm** during term time. The session involves 30 minutes of singing activities followed by half an hour of ‘Stay and Play’ where refreshments and chat can be enjoyed. It restarts on **12<sup>th</sup> January**.

**Contact Details**

Lavenham Library, Lavenham Village Hall, Church St, Lavenham CO10 9QT  
 Tel No: 01787 247729 [www.suffolklibraries.co.uk](http://www.suffolklibraries.co.uk)  
 Email: [lavenham.library@suffolklibraries.co.uk](mailto:lavenham.library@suffolklibraries.co.uk)  
 Suffolk Libraries HMRC charity number XT34476





## FIELD COMPOST LTD

We'll Help Your Garden Grow



Composts  
Manure  
Soil Improvers  
Soil  
Bark  
Woodchip  
Mulch  
Sand and Gravel  
Lawn Care

[www.fieldcompost.co.uk](http://www.fieldcompost.co.uk)

[sales@fieldcompost.co.uk](mailto:sales@fieldcompost.co.uk)  
01440 966966



## JPS Timber

Suppliers of:

- New and Reclaimed Sleepers
- Reclaimed Scaffold Boards
- Carcassing Timber
- Decking
- Post and Rail Fencing
- Oak Barrels and Planters and more....

**07970 559251**

[mail@jpstimber.co.uk](mailto:mail@jpstimber.co.uk)

[www.jpstimber.co.uk](http://www.jpstimber.co.uk)

**Self storage  
containers available  
within a secure  
yard in Cockfield.**

**3 currently available**

**1 x 20ft one stop  
£95 per month**

**1 x 20 ft - £50 per month**

**1 x 30 ft - £75 per month**

**Contact Jenna Parish  
07711993712  
[jparish1984@gmail.com](mailto:jparish1984@gmail.com)**



## 5th November

Playing Fields, Bridge Street Road, Lavenham

**Gates open at 5.30pm**

**Advance Tickets can be bought from Heeks,  
Lavenham Primary & PreSchool**

Adults: £4, Children: £3, Children Under 2 Free  
On The Door, Adults: £5, Children: £4, Children Under 2 Free

**Hot Food Stalls, Bar, Childrens Entertainment,  
Face Painting & Lots lots more**



**On Behalf of Lavenham Primary  
School & Lavenham Pre-School**

**CASH  
ONLY**



# THORPE LANDSCAPING & GARDENING SERVICES

Contact Gavin on 07484 511 804

- To include a regular maintenance package for clients.
- Garden design.
- All soft landscaping, including turfing, seeding, planting etc.
- Hard landscaping, including Patios, walls, decking, driveways, fencing, all types of gates.
- Garden maintenance from hedge cutting, grass cutting, pruning, weeding.

# **PS**

## **PAUL SAINSBURY**

### RESTORATION & BUILDING

**With over 20 years  
experience in restoration  
and all aspects of building**

**Free Estimates  
Mobile 07785 582556  
Email: [enq@paul-sainsbury.co.uk](mailto:enq@paul-sainsbury.co.uk)**

## **A N GILLAM**

### **Building**

All aspects of roofing, chimney work, Lime plastering & rendering.  
Chimney sweep

*Free quotes - No job too small,*

The Mouse House, Bradfield St Clare, IP30 0EL

**Tel 01284 388508 Mob 07961 878564**

# S.E.P PAINTERS

For all your Painting & Decorating requirements  
Fully professional service. Prompt, efficient, reliable.  
No job too big or too small. Dulux Accredited  
Competitive prices. Free Quotations. City & Guilds qualified.  
Phone Andy on: 01787 375824  
Mobile: 07748 800701 or 07802 613902  
Email: [andy@seppainters.co.uk](mailto:andy@seppainters.co.uk)  
VISIT OUR WEB SITE ON [www.seppainters.co.uk](http://www.seppainters.co.uk)



## Andy's Jet Force

- All drainage work undertaken, from block drains to new drains
- CCTV surveys
- High pressure water jetting services
- Patios and driveways cleaned
- Septic tanks and treatment plants emptied, serviced and installed

**Andrew Waldock**  
[jefforce@mail.com](mailto:jefforce@mail.com)

**T 01284 763952 M 07772 751645**  
[www.andysjetforce.co.uk](http://www.andysjetforce.co.uk)



**Your door-to-door laundry service  
& wet cleaning with  
Lagoon® Advanced Care**  
*The green cleaning revolution for  
your clothes*

**Opening Hours: Mon-Fri 8am-5pm**

**Unit 12 Lady Lane Industrial Estate, Crockatt Road,  
Hadleigh IP7 6BQ**

**Tel: 01473 558 448**

**e-mail: [sales@pressganglaundry.com](mailto:sales@pressganglaundry.com)**

**[www.pressganglaundry.com](http://www.pressganglaundry.com)**







**All types of electrical work covered from changing a light fitting to a complete re-wire.**

- New circuits • Fuse board upgrades • House re-wires
- Lighting design • New Kitchen wiring • Changing light fittings
- Garden lighting • Alarm systems • Smoke alarms
- Heating controls • Commercial electrics • PAT testing
- Electrical condition testing and reporting • Certification • Fault finding
- Emergency call outs • Free advice, quotations and estimates

**Call Steve on 07961 576677 or 01284 828484**  
steveroberts101@outlook.com



## The Horseshoes Inn

Traditional family owned & run Freehouse  
Bury Road, Cockfield, Nr Lavenham IP30 OJB

Freshly prepared food - Lunch & Dinner

Sunday roast from £11.95

Children's menu £5.95

Open Tuesday evening to Sunday

Local Ales and Lagers from £3.85

Large selection of drinks

## Support your local Inn

CALL 01284 828177

*West Suffolk CAMRA Award winning cask ales & ciders. T  
rip Advisor Certificate of Excellence Award*



## Wood Pellets

- Sustainably sourced
- 100% made in the UK
- sustainably sourced FSC certified virgin softwood
- Biodegradable
- Dust extracted
- Perfect for animal bedding, cat litter & burning



## Kiln Dried Logs

- Guaranteed low moisture content (avg 15%)
- Lights easier, burns cleaner
- Reduced tarring and maximises heat output



# Cockfield Community Classifieds

Offered Free

## To Rent

Fully equipped Workshop for woodwork with panel, cross cut and band saws, planer + thicknesser, spindle moulder, barley twist machine, 8ft wood lathe and numerous hand tools.

Approx. 2000 sq. ft. - Might suit start up business

Also

Secure building for storage, approx. 2500 sq. ft.

Phone 07584 189359 for details

Adverts in CC Classifieds' are free to insert please send your copy to the editor at [janne@twerbs.co.uk](mailto:janne@twerbs.co.uk) or 01284 828264 by the 15th of the month.

Green Links accepts no responsibility for the accuracy of any advert placed in Green Links and buyers must satisfy themselves of the quality or value of any item prior to purchase or collection.

# Out of fuel? Emergency oil delivery required? Tank leaking?

## CARGATE engineering

Priory Barns, Drinkstone Road, Gedding, Bury St Edmunds, IP30 0QE

### We help customers stay warm around the clock!

Cargate Engineering is a family-run Oftec-registered business specialising in supplying emergency fuel to homes and businesses in remote areas.

Since being established in 1996, Cargate Engineering has also developed experience and skills that allow us to offer a varied and comprehensive list of services, including everything from routine pump station maintenance to regularly scheduled septic tank cleaning and emergency call outs for issues such as overflowing septic tanks and drainage blockages. In addition, we produce high quality CAD drawings, are experts in root ingress removal, and are licensed hazardous waste carriers, ensuring we can meet all your needs. We take pride in our ability to offer a bespoke and friendly service with effective results that will last.

- Emergency Small Load Fuel Delivery and Boiler Relight Service
- Emergency Oil Tank Pump Down and Loan Tank Service
- Tank Replacement Installation Service by Experienced Oftec Engineers
- Contaminated Fuel Uplift Service Meeting Full ADR regulations
- Tank Internals and Bund Sludge Cleaning Service
- Oil Spill - Loss - Validation and Remediation Works
- Decommission of Redundant Fuel Tanks and Fuel Buy Back Scheme



Excellent services at competitive prices...



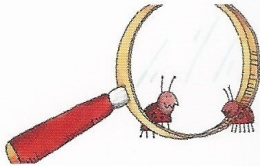
Bury St Edmunds:  
01284 386 538

24/7 Emergency:  
07974 495 362

Email:  
info@cargateweb.co.uk

Website:  
www.cargate-engineering.co.uk

## ANGLIA PEST CONTROL



### PEST CONTROL SERVICES since 1986

Call Will: 07919 356 155

Email:  
iarwainbenadar77@gmail.com

## Bridge Farm

Sudbury Road, Lavenham, CO10 9PJ

Tel: 01787 247522

From Race Horses to Rabbits...

.....we can help you take care of all your animal and poultry needs with our very competitive prices on feeds, supplements and varied types of bedding inc. Hay , Straw & Woodchips

**Why not come and visit our Wild Bird Centre?  
There is so much to see!**

Also we sell Bottled Gas, Coal & Wood.  
Dishwasher Salt, Mushroom Compost & Peat.

We can deliver locally  
Open Monday - Saturday  
9.00am - 5.00pm  
Sunday  
9.00am - 1.00pm



## Congregational Church Corner

The book of Job has long been praised as a "masterpiece of literature" by many writers such as Victor Hugo, Tennyson and Daniel Webster all of whom had much to say in praise of it and rightly so.

The book is named after its main character who was a real person (Ezekiel 14:14 and James 5:11) and so, he was not merely an imagined character as some have assumed. He lived, according to some scholars, between the time of Noah and Abraham and may have been the man Jobab named in Genesis 10:29, who lived in 2200 BC or thereabouts. The authorship of the book is uncertain; although some bible scholars believe it to have been written by Moses, who lived in or about 1500 BC (when we were still in the Bronze Age here in Britain), but others believe that it is much older - which is why it is sometimes called "the book of antiquity".

The book was written to illustrate the faithfulness of Job and tells us that he was a wealthy man (Job 1:3), who lost everything (Job 1:13-20); but nevertheless he remained faithful to God despite all of his trials and tribulations, going so far as to say: "Though He slay me, yet will I trust in Him"(Job 13:15). What faith in God that displays.

The patience of Job is legendary, and he is still used today as illustrative of one who bears adversity with fortitude. Job did this even though his friends tried to persuade him that he had brought all that happened to him upon himself because of something that he had done to offend God in his past. Even Job's wife encouraged him to give up and: "curse God and die"(Job 2:9) and thus end his misery.

Thankfully Job did not follow his wife's advice and died at a good old age (Job 42:17), having by that time received from the God double for all that he had lost (Job 42:10) and having an end to his life that was, "better than his beginning"(Job 42:12).

The patience of Job and his faith in God is an example to us all, as we go into another year with all the ups and downs that may be before us. In all this, may we affirm along with him "I know that my Redeemer lives and that in the end He will stand on the earth" (Job 19:25). And that soon to happen event is something to which we can all look forward with expectant anticipation.

Bill Attwood

Enquiries Pastor Gordon Hold

01284 762663

ghold@gmail.com





# Professional Chimney Sweeping

## Chimney Matters

Town and Country

Mobile : 07767 864127

Phone: 01284 789663

[www.chimneymatters.co.uk](http://www.chimneymatters.co.uk)



- Open fires, Wood burners swept and serviced for maximum efficiency.
- Certificates issued.
- Cows and Bird guards fitted.
- Fully insured.



## Todds Removals

& Todd Storage

a reliable local service you can trust

*Removals  
Storage  
Packing materials  
Packing service*

*UK, Europe and beyond  
Home or Business  
Self Storage*

## Moving?

Call us on **01787 377 489**

[www.todds-removals.co.uk](http://www.todds-removals.co.uk)



## Leon Brown

Arb-Agri Contracting

Tel: 01359 408521

Mobile Number: 07552393830

e-mail : [leonbrown.28@hotmail.co.uk](mailto:leonbrown.28@hotmail.co.uk)

**\*\* Tree Surgery Services \*\***

- \* Dead Wooding & Crown Lifting
- \* Woodland Management
- \* Chipping
- \* Felling & Sectional Dismantling
- \* Crown Reductions
- \* Firewood
- \* Hedge Cutting
- \* Garden & Site Clearance
- \* General Ground Maintenance

# Announcements

Do you have an announcement you would like included here?  
There is no charge for any announcements  
Please contact the Editor Janne Cutting-Keyton on  
01284 828264 or [janne@twerbs.co.uk](mailto:janne@twerbs.co.uk)

# YOUR LOCAL MOLE CATCHER

**MOLE, RABBIT AND VERMIN CONTROL**

Providing a friendly and professional service for both domestic and commercial clients. I have over 30 years experience using traditional and humane methods for the control of moles and rabbits.

**NO MOLE NO FEE**

I also offer quarterly and annual contracts.

**CONTACT DARREN ON 07875 545428  
FOR MORE INFORMATION OR TO BOOK A VISIT**



## STEPHEN GREEN CARPETS

Quality Carpets & Vinyl's Supplied & Fitted  
All Aspects taken care of Gripper - Glue - Underlay

Free Quotations

PHONE 07970 488851

EMAIL: [SGREENCARP@AOL.CO.UK](mailto:SGREENCARP@AOL.CO.UK)



Complete Gas,  
Oil & LpG  
Installations.

T: 01787 247540

E: [info@grdplumbingandheating.co.uk](mailto:info@grdplumbingandheating.co.uk)



**Burnerserve** Ltd

Maintenance, Repair  
and Servicing  
for Oil Fired Boilers  
and AGA Cookers.

**Oftec Registered Engineers,  
Local, Reliable, Professional.**

T: 01787 247540

E: [info@burnerserve.co.uk](mailto:info@burnerserve.co.uk)

W: [www.burnerserve.co.uk](http://www.burnerserve.co.uk)



Unit 5 Norman Way, Lavenham, Suffolk CO10 9PY



# Bridge Farm

Sudbury Road, Lavenham, CO10 9PJ

Tel: 01787 247522

From Race Horses to Rabbits...

.....we can help you take care of all your animal and poultry needs with our very competitive prices on feeds, supplements and varied types of bedding inc. Hay , Straw & Woodchips  
Equine Accessories

**Why not come and visit our Wild Bird Centre?  
There is so much to see!**

Also we sell Bottled Gas, Coal & Wood.  
Dishwasher Salt, Mushroom Compost & Peat.



We can deliver locally  
Open Monday - Saturday  
9.00am - 5.00pm



## Carpet Cleaning & Stone Floor, Upholstery, Rugs

*A few points that make us stand out,*

Rothwell's has been in business since 1993

We're an honest local family firm.

Our large truck mounted machines mean  
more cleaning & drying power  
for the best results possible.

Members of both the NCCA and TACCA.

We will move the furniture.

100% satisfaction or it's FREE.

Call Oliver and Max Campbell  
for expert help today.

01638 428 060

[www.Rothwells.biz](http://www.Rothwells.biz)



## Walnut Tree Designs

BESPOKE CURTAINS & BLINDS

*Free design consultation in your own home- Complete made-to-measure service for all your soft furnishings requirements*

**CUSHIONS - FABRICS - TRIMS -  
POLES - UPHOLSTERY - PELMETS -  
HEADBOARDS - VALENCES - VENE-  
TIAN & ROLLER BLINDS**

Call Viki, Angela or Terri Oxley to arrange a free consultation

Tel: 01284 828263

M: 078269 30011

e-mail: [walnuttreedesigns@gmail.com](mailto:walnuttreedesigns@gmail.com)

**W.A WATTS**  
SINCE 2017  
**AUTOMOTIVE**

M: 07825 744 974

T: 01284 828 325

SERVICING, CAMBELTS  
AIR-CONDITIONING  
MOTS & REPAIRS  
DIAGNOSTICS  
BRAKES, CLUTCHES  
AND TYRES



**MORRIS**  
LUBRICANTS



**MILLERS OILS**

Here for all your vehicle repairs  
and maintenance needs!

\*Now authorised stockists for  
Millers and Morris Oils\*

Find us at Unit 1, Cross Green,  
Cockfield IP30 0LG  
**Contact Us Today!**



## PAUL THE PLASTERER

All aspects of plastering work undertaken  
No job too small



Fully qualified, Clean, Honest and reliable  
Tradesman

15 Years experience

Call Paul – 01284 830887/ 07958 229559


Lawshall Village, Bury St Edmunds IP29 4PW

Free  
estimates



== *W. A. Deacon* ==

Funeral Services



*An Independent Family Company,  
dedicated to your service.  
Established over fifty years.*

Golden Charter pre-paid arrangements available.  
Private Chapel of Rest

Norman Way, High Street, Lavenham,  
Suffolk, CO10 9PY.

*24-Hour Telephone Service*

01787 248282 & 248147

## SEPTIC TANK EMPTYING AND DRAIN CLEANING

Tank emptying from £80

## A K SERVICES

Ramsey Road Hadleigh

01473 822694  
07891341645  
Available 24/7

No callout charge for  
emergencies

## WINDOWS CLEANED AND GARDENS TIDIED

***Call Craig for a free quote and introductory discount***

**01284 827110 / 07816 932878**

**brightgreen22@gmail.com**

**www.brightandgreen.co.uk**

*All work fully insured*

# BRIGHTGREEN

## **SUFFOLK REVIVE A DRIVE**

Would you like your drive or patio restored to a newly laid finish.

Improve both the appearance and value of your property.

**HIGH PERFORMANCE PRESSURE CLEANING**

**PATHS, PATIOS, DRIVEWAYS, WALLS, GARDEN FURNITURE**

**DECKING, TENNIS COURTS, STABLES, SWIMMING POOLS and MORE**

**RE-POINTING, RE-SANDING AND SEALING ALSO AVAILABLE**

**TARMAC RE-DRESSED - REPAIRS UNDERTAKEN**

**Phone for a FREE quotation Tel: MARK 01284 828294 or 07833 582636**

To advertise your  
business or services in  
Green Links  
please contact our  
Advertising Manager  
Sue Harrison  
at  
sue.harrison42@gmail.  
com



Town & Country Interiors

All aspects of building work  
undertaken.

Extensions, renovations,  
kitchens, bathrooms  
and bedrooms.

Please call 01284 828 592 or  
01787 282 353  
or visit our website  
[www.tcisuffolk.co.uk](http://www.tcisuffolk.co.uk)

## **CJ Computer Services**

Repairs - Upgrades - Custom Build Computers

Reasonable Charges - On Site Service - Fully Insured

Fully Qualified Technician - One 2 One Tuition - Lap-Top Sales

Wireless Broadband Set-up and Secured

**Chris 01359 271772 or 07717 604180 [chris@cjcomputerservices.biz](mailto:chris@cjcomputerservices.biz)**

# Ventanilla Blinds

Rollers Verticals Romans Pleated  
Wooden & Metal Venetians Sheer Rollers  
Conservatory blinds Blackout blinds  
Perfect fit Pleated, Roller & Venetian  
Awnings, Garden sails & Roller curtains

01787 313677 or 07966 371963

To advertise your  
business or services in Green Links  
please contact our  
Advertising Manager  
Sue Harrison  
at  
[sue.harrison42@gmail.com](mailto:sue.harrison42@gmail.com)

**Special cakes for  
special celebrations**

*Jean Banker*

[www.amazingcakesbyjean.co.uk](http://www.amazingcakesbyjean.co.uk)



01359 241135

# R W SERVICES

## PROPERTY & GARDEN MAINTENANCE

All aspects of property maintenance covered.  
Garden Design & Construction, Painting & Decorating  
Roofing, Carpentry, Groundwork etc.

Free quotations    Fully Insured    References available

Rod Williams 01284 828965  
Mobile 0775 2626261

Local tradesmen with integrity



## Oil-fired boiler engineer

**Mark Smith (OFTEC Registered)**

Fully trained in both domestic and light commercial boilers.

All repairs, servicing and commissioning undertaken by  
a friendly and efficient Cockfield based engineer.



**Registered  
Business**

Competitive prices

Tel: 01284 827446



**Registered  
Technician**



# **TARLING FENCING**

**FENCING AND GROUNDCARE SPECIALISTS**

Equestrian  
Agricultural  
Domestic  
Gate installation  
Landscaping  
Groundcare

**Contact John for a free quotation:  
01359 242496 or 07590 580512  
tarlingfencing@outlook.com**



**We specialise in Precision and Civil Engineering  
With over 30 years experience.**

We cover a wide range of manufacturing needs.  
Including CNC Milling and Turning,  
Structural Steels (CE Accredited),  
Welding Fabrication and Installation.

For more about us please visit our website  
[www.grahamparishengineering.co.uk](http://www.grahamparishengineering.co.uk)

Contact us on 01284 828118 or  
Email [parisheng@btconnect.com](mailto:parisheng@btconnect.com)

# Cockfield Contacts

February 2022 Web

CATEY Pre-School	Teresa Rutterford	<a href="mailto:catey@cockfield.org.uk">catey@cockfield.org.uk</a>
Cockfield Carpet Bowls Club	June Pettit	<a href="mailto:carpet.bowls@cockfield.org.uk">carpet.bowls@cockfield.org.uk</a>
Cockfield Cemetery	Ralph Turner	828201
Cockfield Charties	Tony Box	<a href="mailto:charities@cockfield.org.uk">charities@cockfield.org.uk</a>
Cockfield Congregational Church	Pastor Gordon Hold	01284 762663
Cockfield Football Club	Joe Brinkley	<a href="mailto:football@cockfield.org.uk">football@cockfield.org.uk</a>
Cockfield Netball Club	Lindsee Summers	<a href="mailto:netball@cockfield.org.uk">netball@cockfield.org.uk</a>
Cockfield Post Office	Barbara Turner	01284 828201
Cockfield Primary School	Trudie Harkin Headteacher	<a href="mailto:admin@cockfield.suffolk.sch.uk">admin@cockfield.suffolk.sch.uk</a>
Community Council Secretary	Janne Cutting-Keyton	<a href="mailto:community.council@cockfield.org.uk">community.council@cockfield.org.uk</a>
Computer Circle, e-news	Neil Ashton	<a href="mailto:computer.circle@cockfield.org.uk">computer.circle@cockfield.org.uk</a>
County Council - Local Member	Robert Lindsay	07738 264087
		<a href="mailto:robert.lindsay@suffolk.gov.uk">robert.lindsay@suffolk.gov.uk</a>
Dentist	Lavenham Dental Practice	01787 247058
	Paul Rolph & Associates	01787 247046
District Council	Babergh offices	0300 1234000
Local Member	Clive Arthey	01787 211316
		<a href="mailto:clive.arthey@babergh.gov.uk">clive.arthey@babergh.gov.uk</a>
Local Member	Margaret Maybury	01787 464358
		<a href="mailto:Margaret.Maybury@babergh.gov.uk">Margaret.Maybury@babergh.gov.uk</a>
Doctors	Long Melford Practice	01787 378226
Earls Meador/Bruffs Line	Rodney Williams	<a href="mailto:earls.meadow@cockfield.org.uk">earls.meadow@cockfield.org.uk</a>
Footpath Warden	Mark Webster	<a href="mailto:footpaths@cockfield.org.uk">footpaths@cockfield.org.uk</a>
Friends of Cockfield School FOCSA	Mark Aston	<a href="mailto:fosca@cockfield.org.uk">fosca@cockfield.org.uk</a>
Green Links - Village Magazine	Janne Cutting-Keyton	<a href="mailto:green.links@cockfield.org.uk">green.links@cockfield.org.uk</a>
Mini - Bus Hire	Parish Council	<a href="mailto:minibus@cockfield.co.uk">minibus@cockfield.co.uk</a>
Parish Council Clerk	Steve Ball	<a href="mailto:parish.council@cockfield.org.uk">parish.council@cockfield.org.uk</a>
Pavilion Administrator (C.C. Council)	Rodney Williams	<a href="mailto:pavilion@cockfield.org.uk">pavilion@cockfield.org.uk</a>
Pharmacy	The Lavenham Pharmacy	01787 247284
Stanningfield & District Agric. Club	David Simpson	<a href="mailto:stannag.club@cockfield.org.uk">stannag.club@cockfield.org.uk</a>
St. Peters Church	Rev. Sharon Potter	01284 828599
Church Wardens	Norman Kelly/David Smith	<a href="mailto:church.warden@cockfield.org.uk">church.warden@cockfield.org.uk</a>
Village Hall - Bookings	June Pettit	<a href="mailto:village.hall@cockfield.org.uk">village.hall@cockfield.org.uk</a>
Secretary	Vera Shepherd	<a href="mailto:village.hall@cockfield.org.uk">village.hall@cockfield.org.uk</a>
Village Recorder	Brenda Dyer	<a href="mailto:recorder@cockfield.org.uk">recorder@cockfield.org.uk</a>
Women's Institute Secretary	Suzanne Veal	<a href="mailto:wi@cockfield.org.uk">wi@cockfield.org.uk</a>

Cockfield Community Council

# **New Year's Day Hangover Hike Sunday 1st January 2023**

**Come and join the Community Council  
for a pleasant hike around the  
footpaths of Cockfield.**

Meet in the Village Hall car park at  
10.45am - the walk will last about  
an hour and a half,  
refreshment will be available on our  
return to the Hall.

**All welcome but children must be  
accompanied by an adult and  
dogs must be kept on leads at all times.**

If its pouring the walk will be cancelled